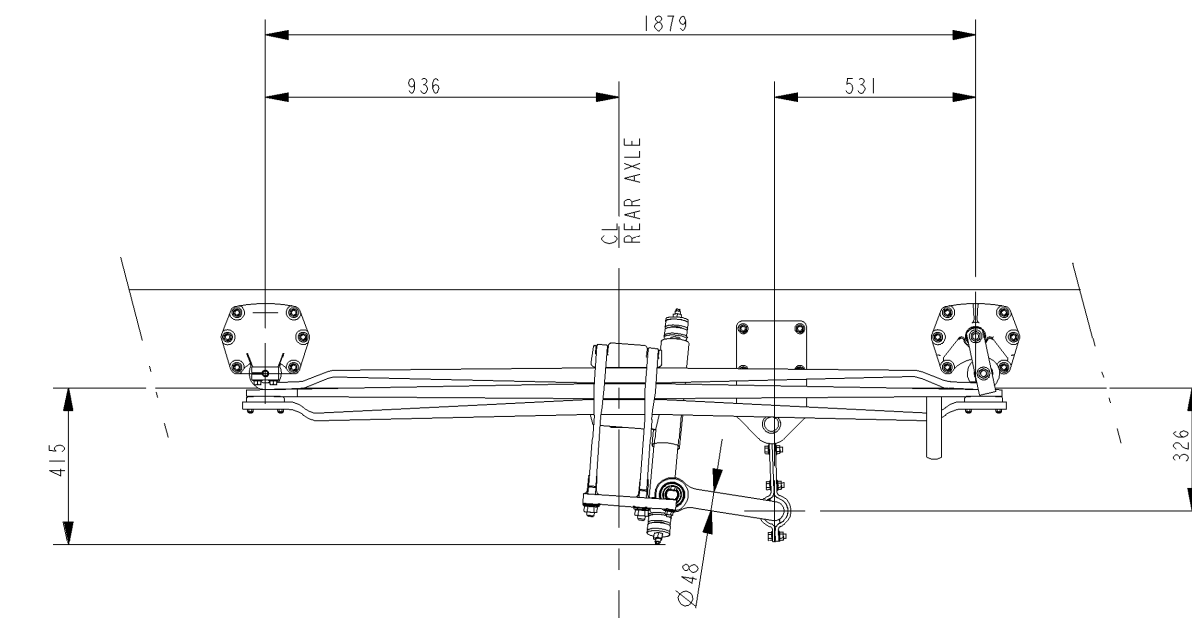
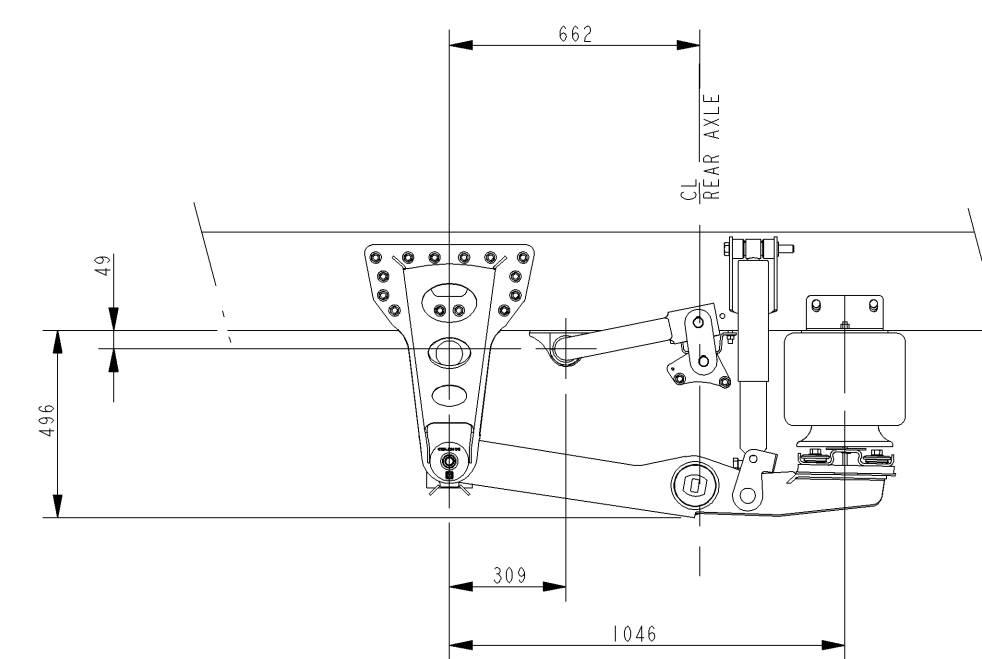


DETAILS 'V'

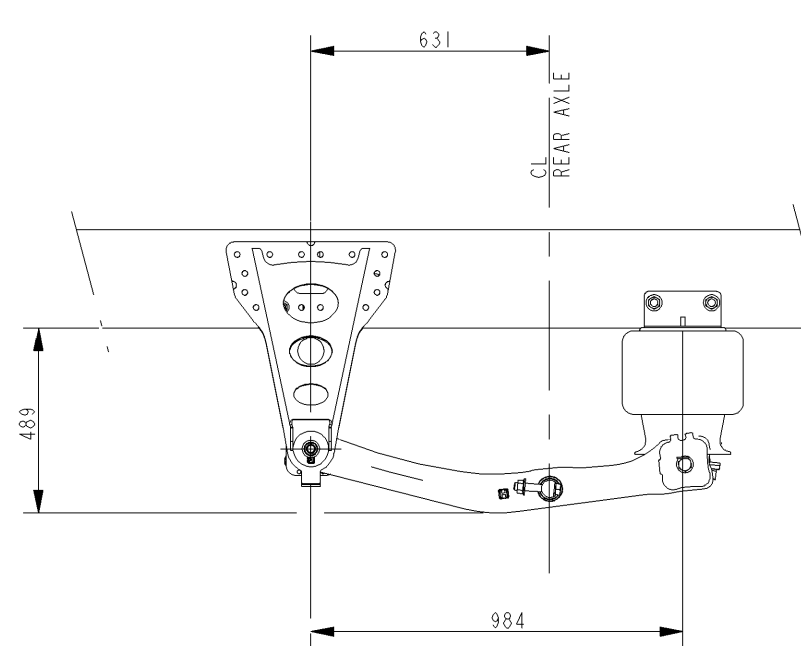
PARABOLIC STEEL SUSPENSION (TIPPER/AUCLAGE)



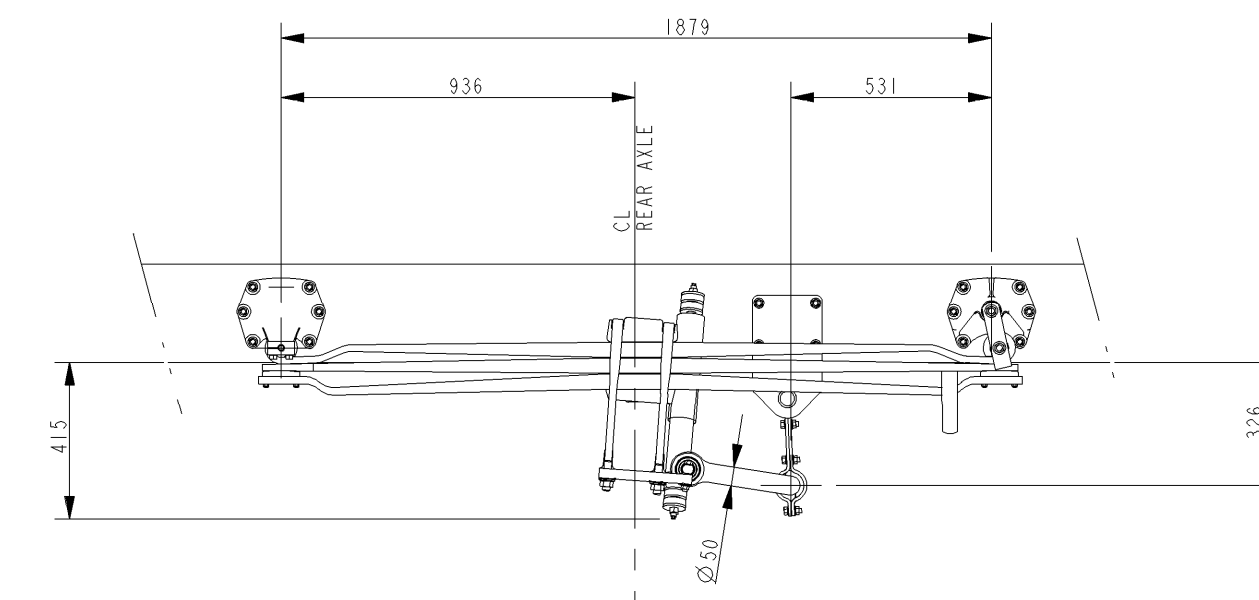
2-BAG AIR SUSPENSION



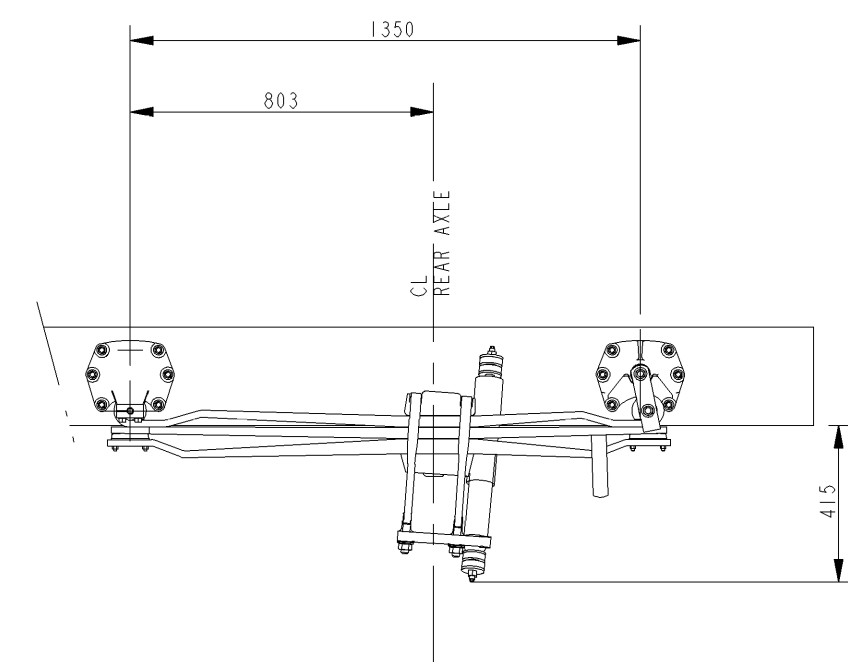
REAR AIR SUSPENSION



PARABOLIC STEEL SUSPENSION (HIGH CENTRE OF GRAVITY)



ASYMMETRIC STEEL SUSPENSION (ROADSWEEPER)



NOTES:

GEEN MATEN VAN TEKENING OPMETEN.  
WIJZIGINGEN ZONDER VOORAFGAANDE KENNISGEVING VOORBEHOUDEN.  
VOOR UITVOERING VAN HET VOERTUIG RAADPLEEG  
MEN DE ORDERBEVESTIGING.

DO NOT SCALE DRAWING.  
SUBJECT TO MODIFICATION WITHOUT PRIOR NOTICE.  
PLEASE SEE NOTE FOR DEFINITIVE VEHICLE LAY-OUT.

NE RIEN RELEVER DU DESSIN.  
SOUS RESERVE DE MODIFICATIONS SANS AVIS PREALABLE.  
VEUILLEZ CONSULTER LE BON DE COMMANDE  
POUR LE EQUIPEMENT DU VEHICULE CONCERNE.

KEINE ZEICHNUNGSMASSE AUFMESSEN.  
ÄNDERUNGEN OHNE VORANKÜNDIGUNG VORBEHALTEN.  
DIE AUSFÜHRUNG DES BETREFFENDEN FAHRZEUGS  
ENTNEHME MAN DER AUFTRAGSBESTÄTIGUNG.

Rear Air Suspension Added in A6 Zone.		23/10/10	SK	DM	5711772	B
In title block Euro 4 is updated to Euro 4/5.		10/03/08	MKJ	BG	5700743	A
modification description		date	drawn by	auth by	mod.no.	issue
general tolerances	tolerance principle	<b>DETAIL - V</b> <b>FA LF 55 Euro 4/5 12-15T</b>				
for drawing interpretation, see DAF standard.	material					
surfaces/corners	heat/surface treatment	size	scale	sheet	model number	
authorised by	date	paint specification	third angle projection	This drawing is the property of DAF - Trucks N.V. Eindhoven, The Netherlands and may not be copied in whole or in part without the prior written consent of the owner.		
drawn by	date	prod.gpp.spec.	spec. indicat.	drawing/issue number		
source	replacement for	replaced by		CAD Pro/ENGINEER		