

DETAIL 'E' MUDWING DETAILS

L.H.D. VEHICLE
LOW LEVEL AIR INTAKE - DAY AND SLEEPER CAB
HIGH LEVEL AIR INTAKE - SLEEPER ONLY

L.H.D. VEHICLE
HIGH LEVEL AIR INTAKE - DAY CAB ONLY

DETAIL 'E' MUDWING DETAILS

R.H.D. VEHICLE
LOW LEVEL AIR INTAKE - DAY AND SLEEPER CAB
HIGH LEVEL AIR INTAKE - SLEEPER ONLY

R.H.D. VEHICLE
HIGH LEVEL AIR INTAKE - DAY CAB ONLY

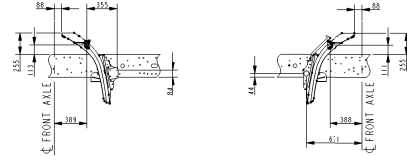
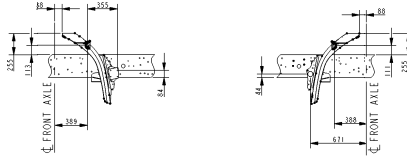
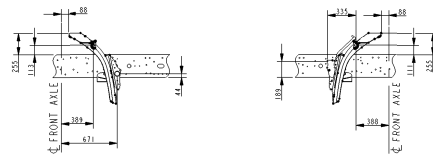
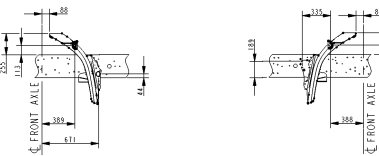
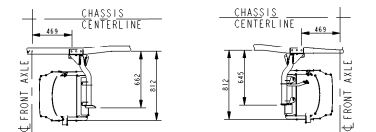
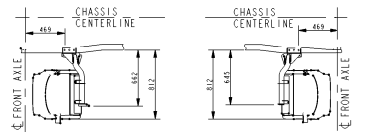
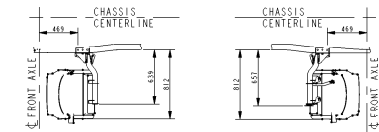
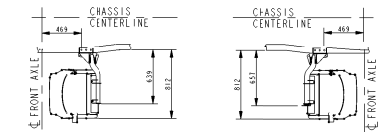
DETAIL 'F' PROP SHAFT DATA TO FOLLOW.

GEEN MATEN VAN TEKENING OPMETEN.
WIJZIGINGEN ZONDER VOORAFGAANDE KENNISGEVING VOORBEHOUDEN.
VOOR UITVOERING VAN HET VOERTUIG RAADPLEG DE ORDERBEVESTIGING.

DO NOT SCALE DRAWING.
SUBJECT TO MODIFICATION WITHOUT PRIOR NOTICE.
PLEASE SEE NOTE FOR DEFINITE VEHICLE EXECUTION.

NE RIEN RELEVER DU DESSIN.
SOUS RESERVE DE MODIFICATIONS SANS AVIS PREALABLE.
VEUILLEZ CONSULTER LE BON DE COMMANDE POUR L'EQUIPEMENT DU VEHICULE CONCERNE.

KEINE ZEICHNUNGSMASSE AUFMESSEN.
ÄNDERUNGEN OHNE VORANKÜNDIGUNG VORBEHALTEN.
DIE AUSFÜHRUNG DES BETREFFENDEN FARBZEUGS ENTNEHME MAN DER AUFTRAGSBESTÄTIGUNG.



modification description	date	drawn by	auth by	mod.no.	issue
general tolerances	tolerance principle	title			
for drawing interpretation, see DM standard:	material	DETAILS - E & F FA LF EURO 5 (NON EU) 18-19T			
surfaces/finishes	heat/surface treatment				
authorised by	date	paint specification	size	scale	sheet
K. WILLIAMS	051114		SP	1:30	1 of 1
drawn by	date	prod. spec. appl.	spec. standard	<small>This drawing is the property of DAF - Trucks N.V. Eindhoven, The Netherlands, and may not be copied in whole or in part without the prior written consent of the owner.</small>	
C. ROBINSON	051114		DAF	<small>drawing/issue number</small> NSEA875/00	
source	replacement for	<small>replaced by</small> CAD Pro/ENGINEER			