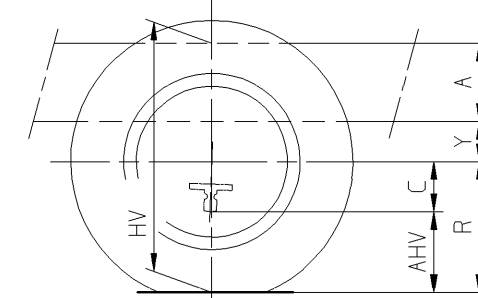
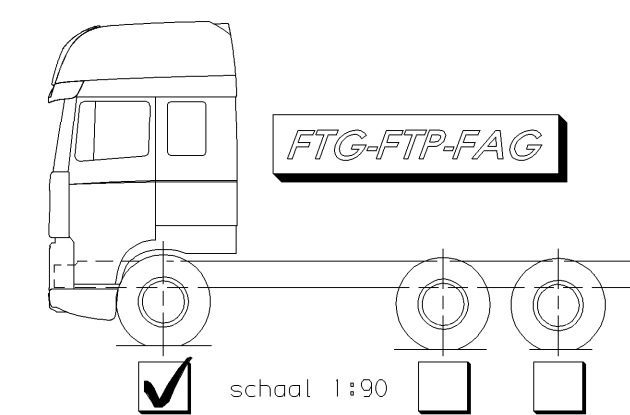


Langsliggerhoogte Height main girder	A
	260
	310



$$HV = R + Y + A$$

$$AHV_{(min.)} = R - C$$

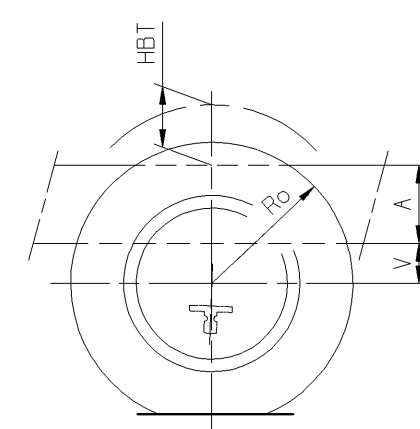


- 1) = Bladveer V00R + ACHTER
Leaf suspension FRONT + REAR
- 2) = Bladveer V00R + Luchtvering ACHTER
Leaf suspension FRONT + Air suspension REAR
- 3) = Luchtvering V00R + ACHTER
Air suspension FRONT + REAR

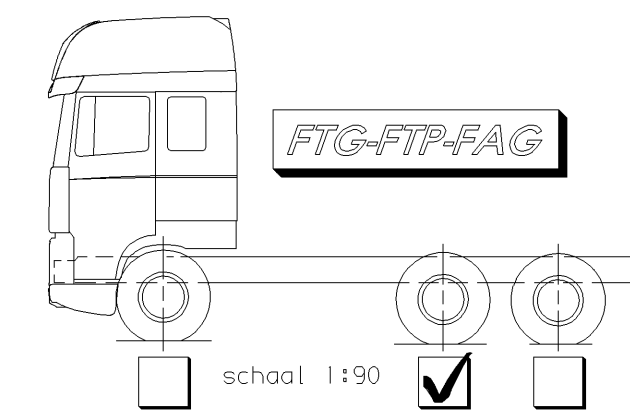
Attention:
 F.. CF 2): Only CF75/85
 F.. XF 2): Only XF105
 F.. 2) : CF75/85 + XF105

Bladvering V00R / Leaf suspension FRONT			
Ophanging + Vooras Suspension + Front axle	Y (mm)	C (mm)	Voertuigtype Vehicle type
75 kN leaf + 152N	$153 + [21,9 \times (7,5 - F)]$	210	FTP XF 2); FTP CF 2)
75 kN leaf + 152N	$162 + [19,62 \times (7,5 - F)]$		FTG 2); FAG CF 2)
90 kN leaf + 182N	$162 + [13,01 \times (9 - F)]$	232	FAG CF 2)

Langsliggerhoogte Height main girder	A
	260
	310



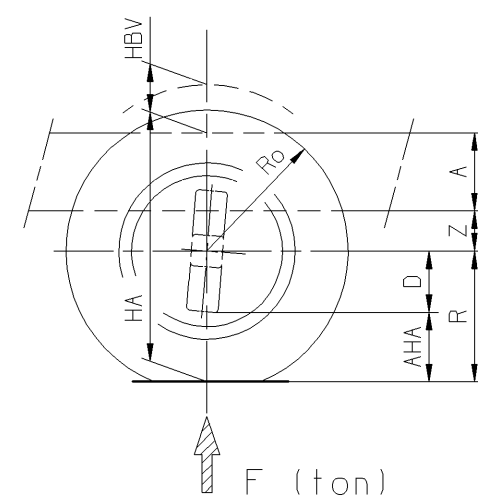
$$HBT_{(max.)} = Ro - A - V \quad (y.o.y.)$$



- 1) = Bladveer V00R + ACHTER
Leaf suspension FRONT + REAR
- 2) = Bladveer V00R + Luchtvering ACHTER
Leaf suspension FRONT + Air suspension REAR
- 3) = Luchtvering V00R + ACHTER
Air suspension FRONT + REAR

Luchtvering VOORLOOPAS / Air suspension SECOND STEERED AXLE			
Ophanging + Voorloopas Suspension + Second steered axle	Zonder hefbaar voorloopas Without liftable second steered axle V (y.o.y.) (mm)	Met hefbaar voorloopas With liftable second steered axle V (y.o.y.) (mm)	Voertuigtype Vehicle type
75 kN air + 150N	125	90	FTG 2)
44 kN air + 09N044	125	95	FAG CF 2)
	---	211	FTP 2)

Langsliggerhoogte Height main girder	A
	260
	310

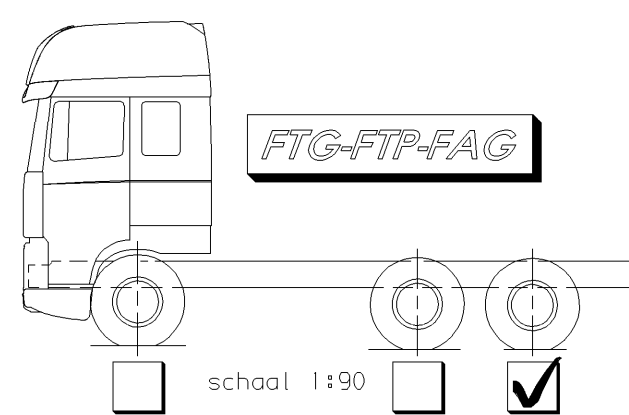


$$HA = R + Z + A$$

$$HBV_{(max.)} = Ro - A - Z \quad (y.o.y.)$$

$$AHA_{(min.)} = R - D$$

Langsliggerhoogte Height main girder	A
	260
	310



- 1) = Bladveer V00R + ACHTER
Leaf suspension FRONT + REAR
- 2) = Bladveer V00R + Luchtvering ACHTER
Leaf suspension FRONT + Air suspension REAR
- 3) = Luchtvering V00R + ACHTER
Air suspension FRONT + REAR

Attention:
 F.. CF 2): Only CF75/85
 F.. XF 2): Only XF105
 F.. 2) : CF75/85 + XF105

Luchtvering ACHTER / Air suspension REAR						
Ophanging + Achteras Suspension + Rear axle	Rijstand Driving position Z (mm)	Lage stand Low position Z (mm)	Hoge stand High position Z (mm)	D (mm)	Z (y.o.y.) (mm)	Voertuigtype Vehicle type
130 kN air +	$\begin{cases} 1339 \\ 1347 \\ 1356 \end{cases}$	212	140	320	345	FTG2); FTP 2); FAG CF 2)
	252 *			$\begin{cases} 261 \\ 285 \\ 182 \end{cases}$	120	
			R band \leq 462	R band \geq 463		

*)
 hefbaar vooras 2 op
 Liftable front axle 2 raised

(y.o.y.)
 As iJzer op iJzer
 Axle metal on metal

GEEN MATEN VAN TEKENING OPMETEN.
 WIJZIGINGEN ZONDER VOORAFGAANDE KENNISGEVING VOORBEHOUDEN.
 VOOR UITVOERING VAN HET VOERTUIG RAADPLEGE MEN DE ORDERBEVESTIGING.

DO NOT SCALE DRAWING.
 SUBJECT TO MODIFICATION WITHOUT PRIOR NOTICE.
 PLEASE SEE NOTE FOR DEFINITE VEHICLE EXECUTION.

NE RIEN RELEVANT DU DESSIN.
 SOUS RESERVE DE MODIFICATIONS SANS AVIS PREALABLE.
 VEUILLEZ CONSULTER LE BON DE COMMANDE POUR L'EQUIPEMENT
 DU VEHICULE CONCERNE.

KEINE ZEICHNUNGSMASSE AUFMESSEN.
 AENDERUNGEN OHNE VORANKUNDIGUNG VORBEHALTEN.
 DIE AUSFUHRUNG DES BETREFFENDEN FAHRZEUGS ENTNEHME
 MAN DER AUFTRAGSBESTATIGUNG.

Voor belaste(R)- en onbelaste(Ro) bandenstralen en SV-SB-TB-BV-BB maten zie speciale tekening: 1260799.
 For rolling radius laden(R) and unladen(Ro) and SV-SB-TB-BV-BB dimensions see special drawing: 1260799.
 Pour les rayons des pneumatiques en charge(R) et à vide(Ro) et SV-SB-TB-BV-BB dimensions voir plan no: 1260799.
 Für belastete(R) und unbelastete(Ro) Reifenhalmmesser und SV-SB-TB-BV-BB Masse siehe Zeichnung: 1260799.

- FTP CF maat Y was 162 + [19,62 x (7,5 - F)] (Tes/Mui 84763) - FAG CF75/85 1) n.v.t. in projekt 10680.(Layout)	060217	RBO		10663	01
modification description	date	drawn by	auth. by	mod.no.	issue
general tolerances	tolerance principle	title			
For drawing interpretation, see DAF standards	material	WAGENHOOGTES CF/XF VECHICLEHEIGHTS CF/XF FTG-FTP -FAG Projekt 10680			
surfaces/corners	heat/surface treatment	size	scale	sheet	model number
	/	SP	1:30	1 of 1	
authorised by	date	part specification	third angle projection	This drawing is the property of DAF-Trucks N.V., Eindhoven, the Netherlands and may not be copied in whole or in part without the prior written consent of the owner.	
drawn by	date	prod.grp spec. spec. indicat.		drawing/issue number	
R. Bosmans	041111			1668112/01	
source	replacement for	replaced by	CAD Unigraphics II		