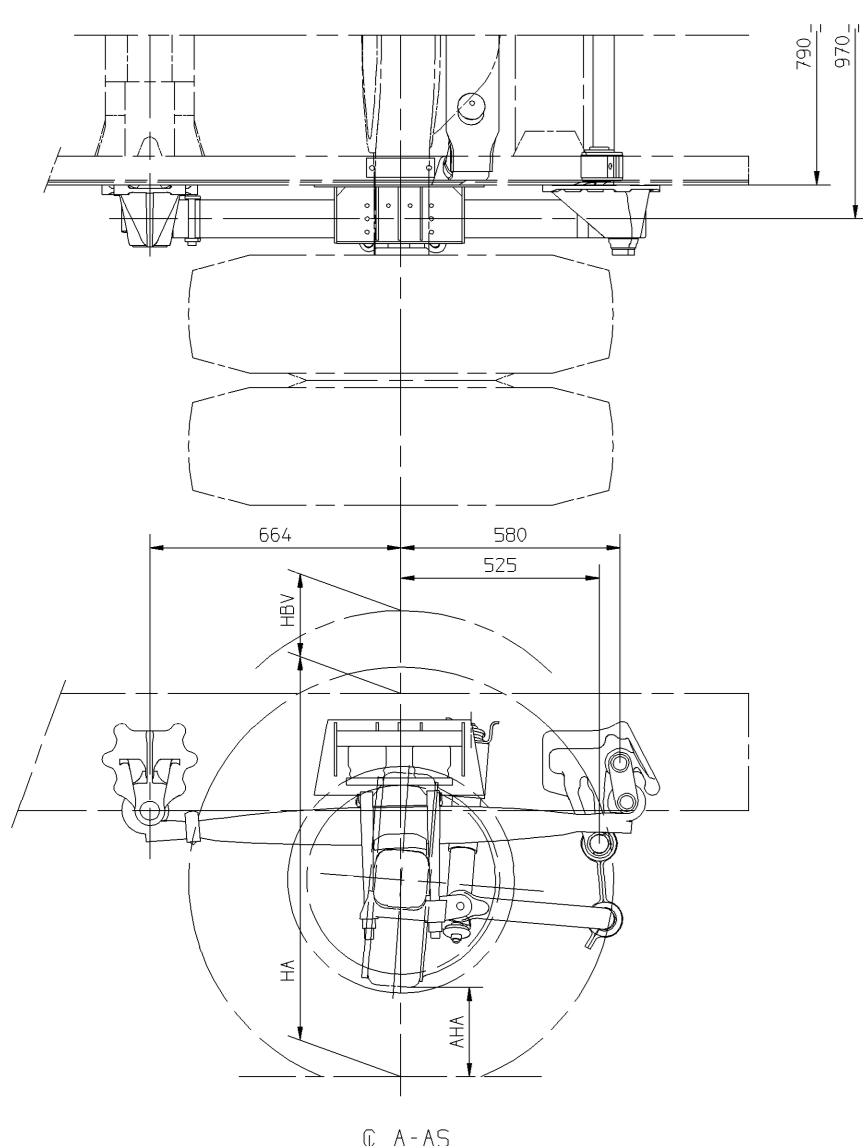
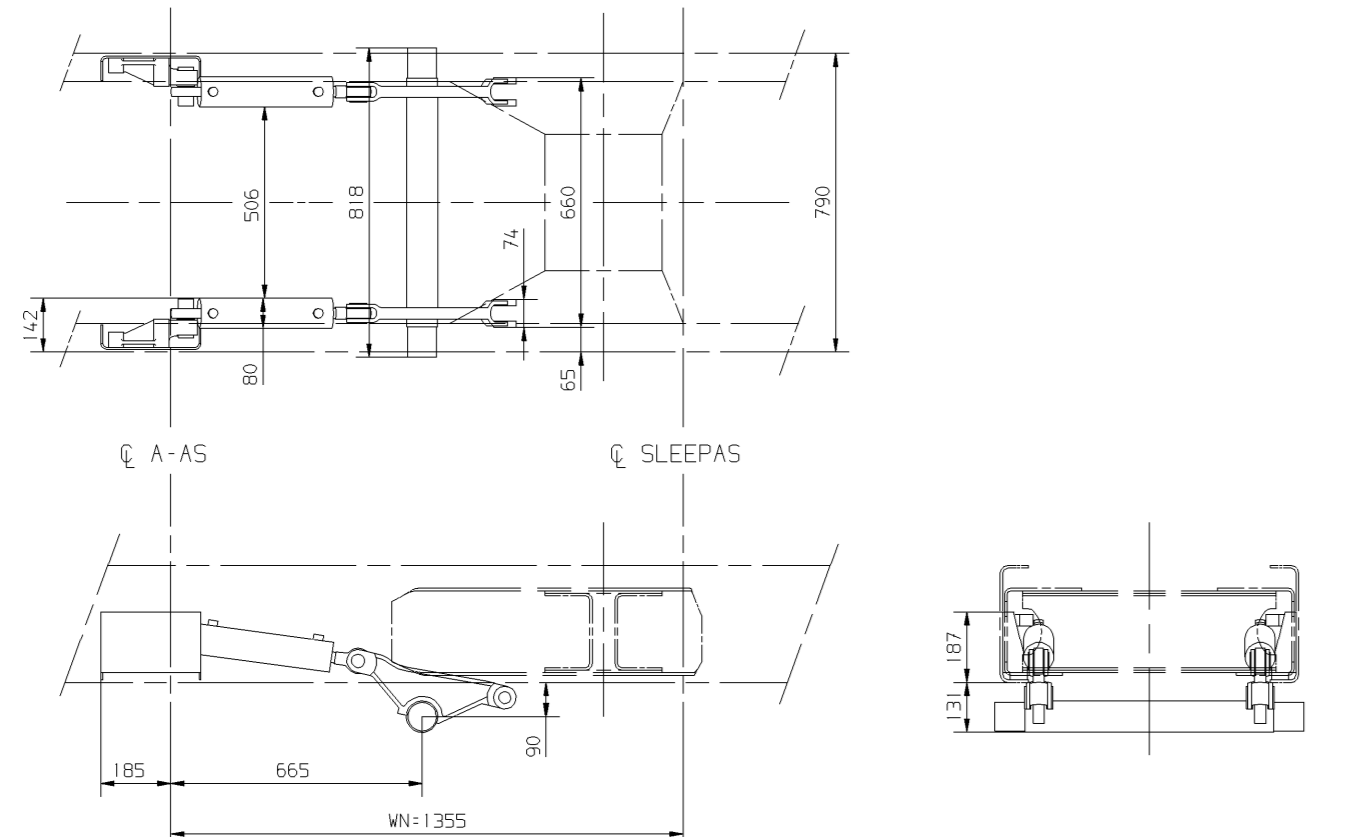


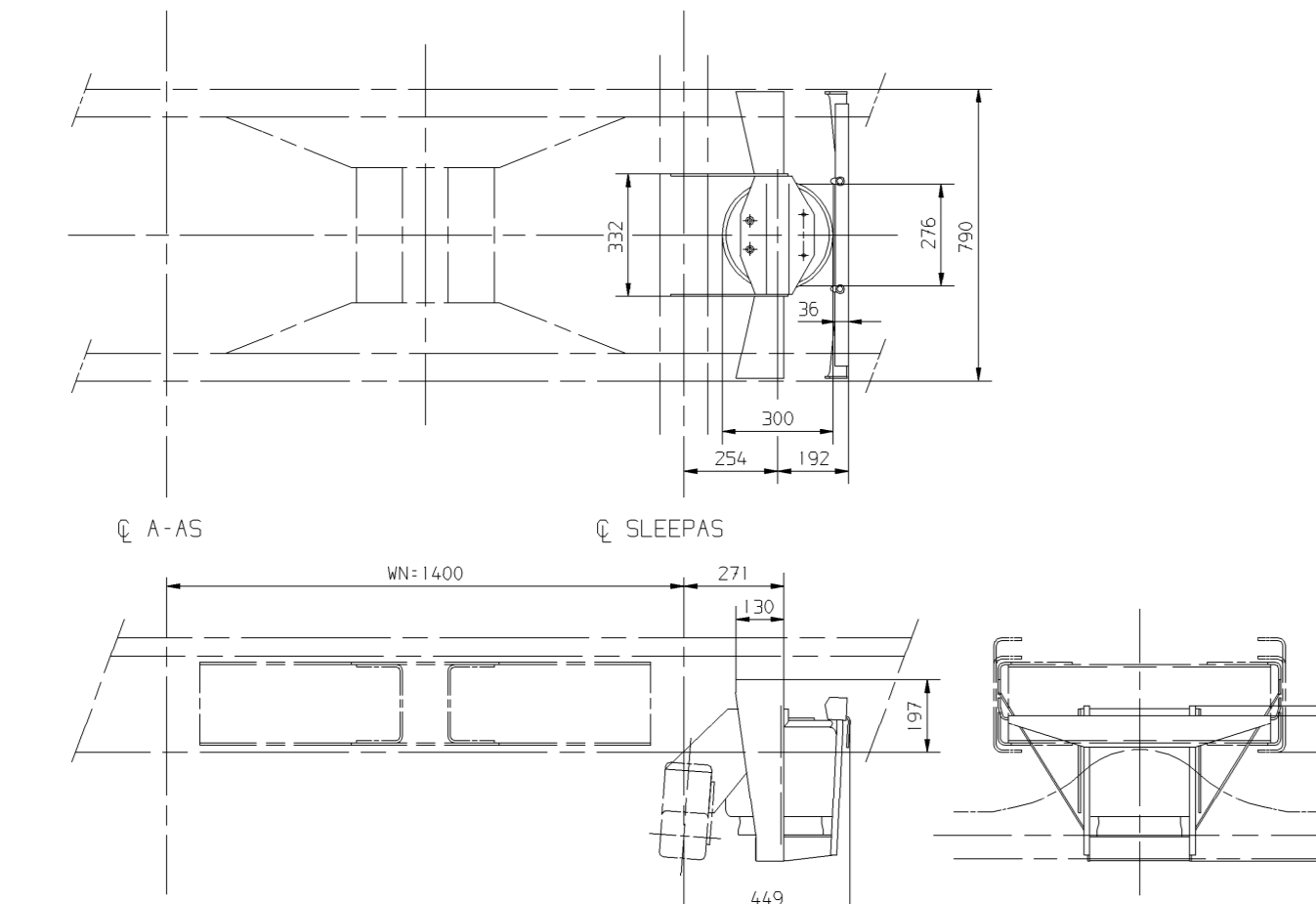
Voor wagenhoogtes, zie tekening 1668111
For vehicle heights, see drawing 1668111



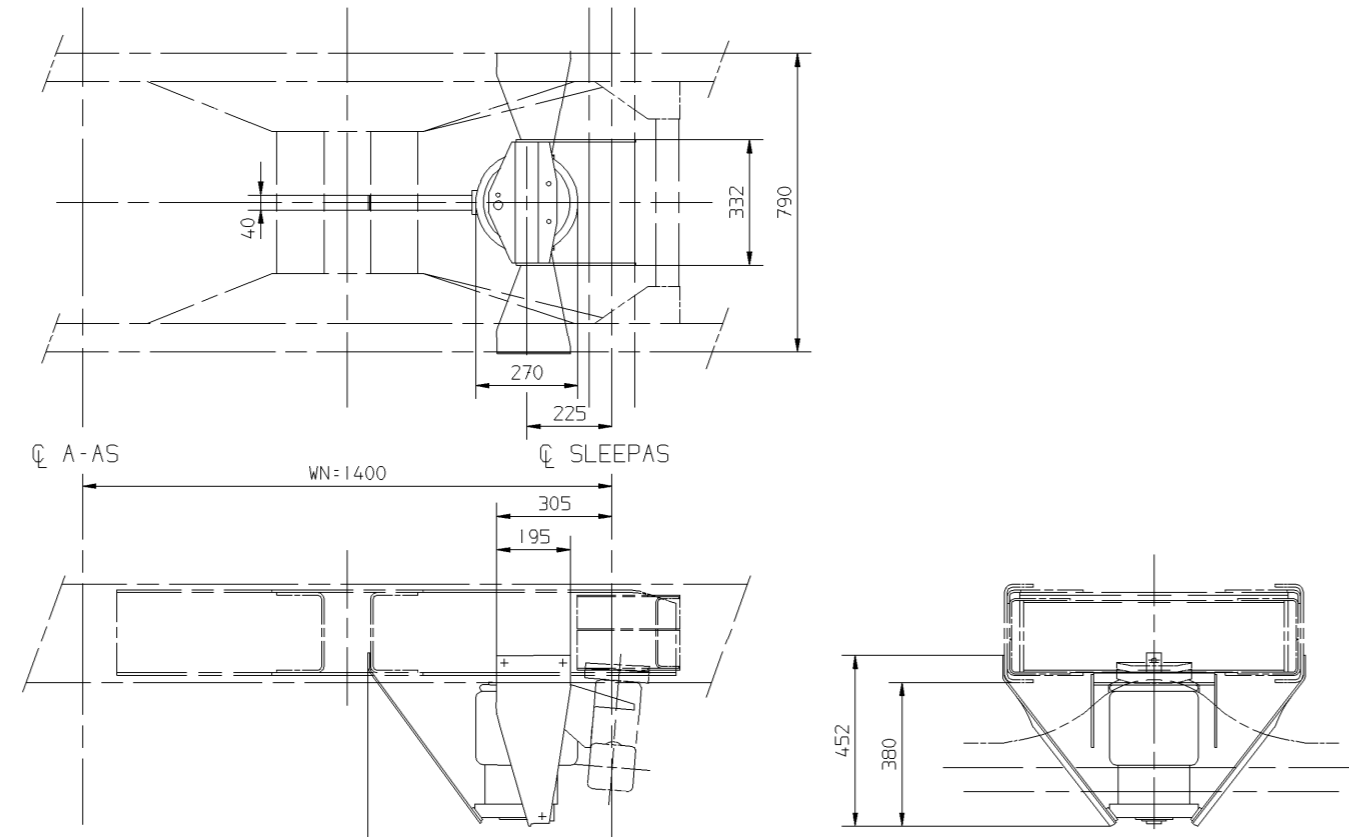
DETAIL: V
FA CF75/85



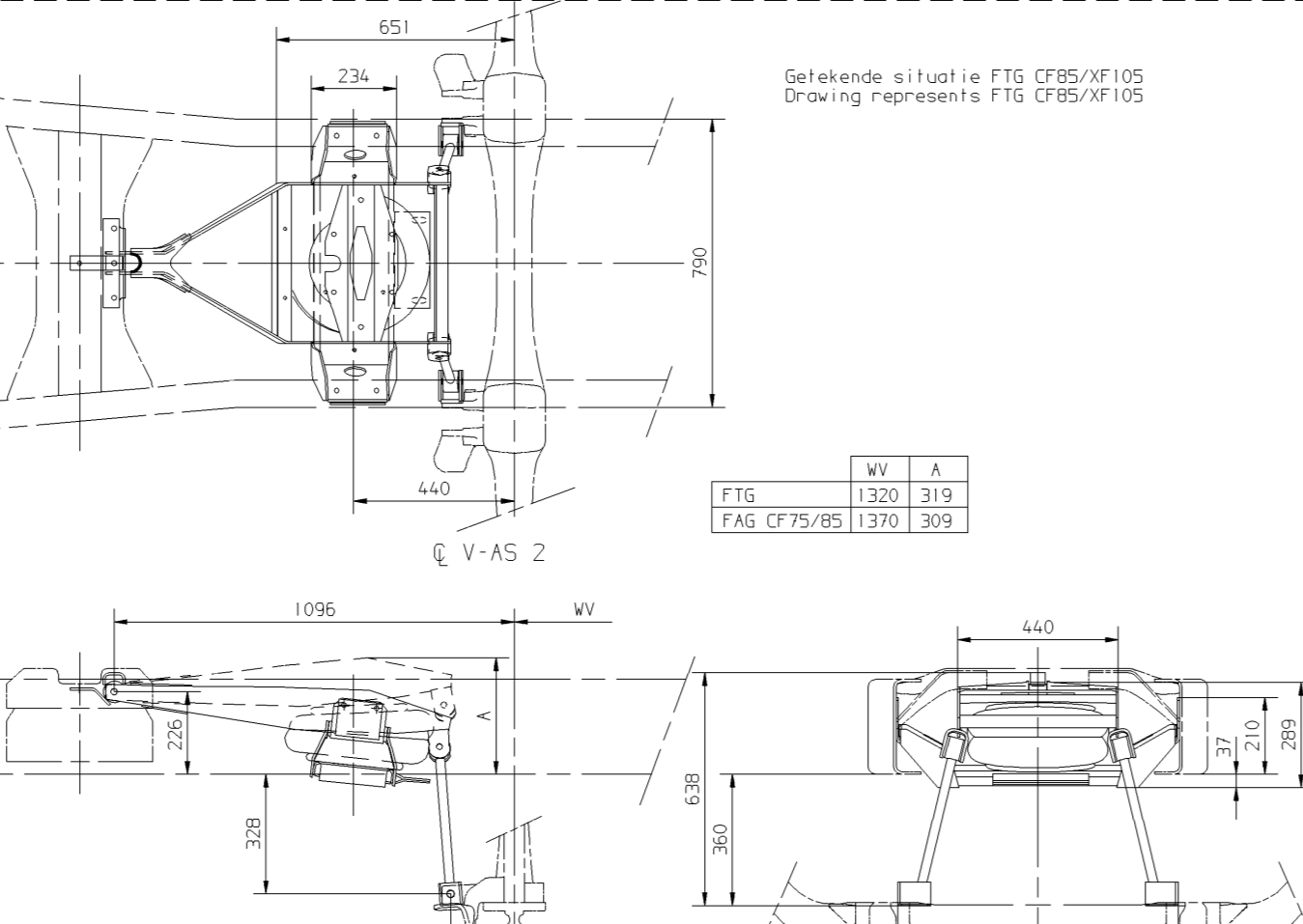
FAS CF75/85 11-FAC CF85 11



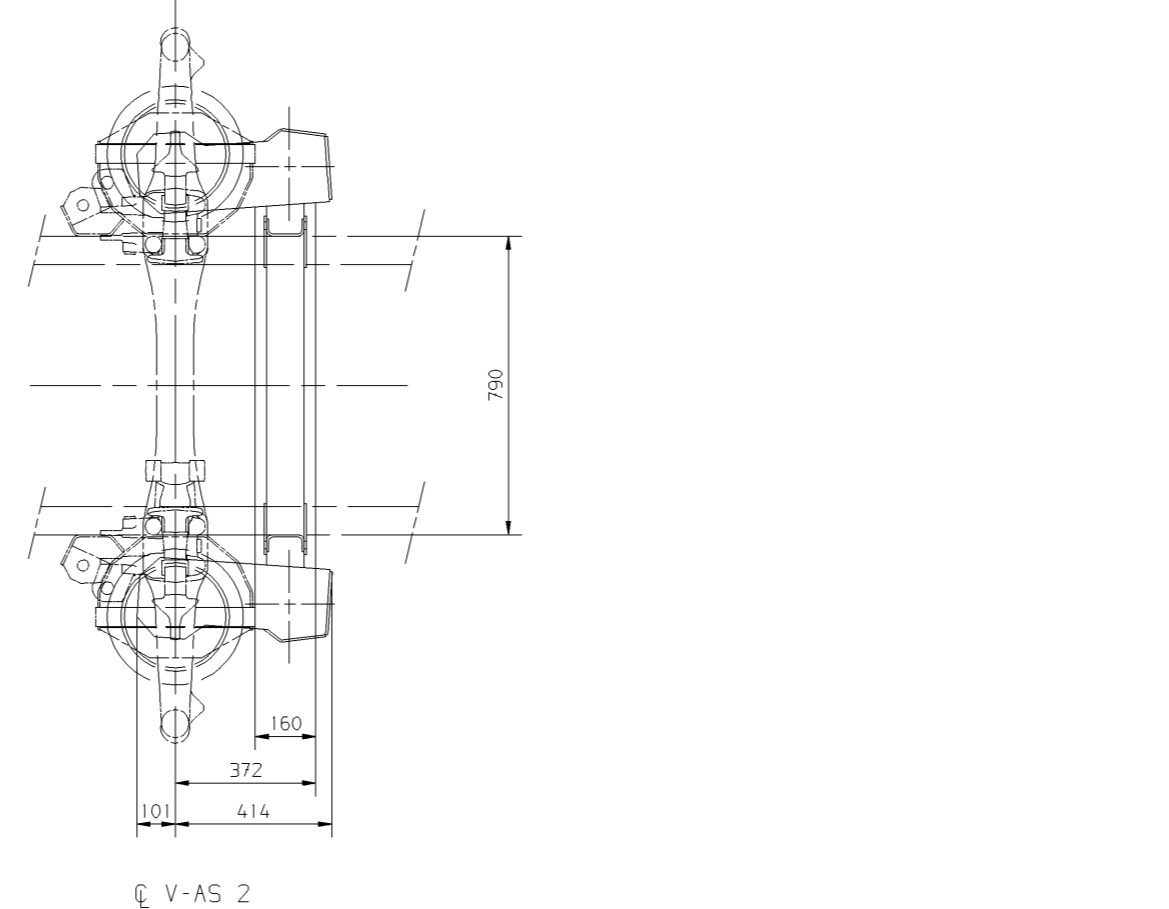
DETAIL: W
FTS 21-FAS 21+31



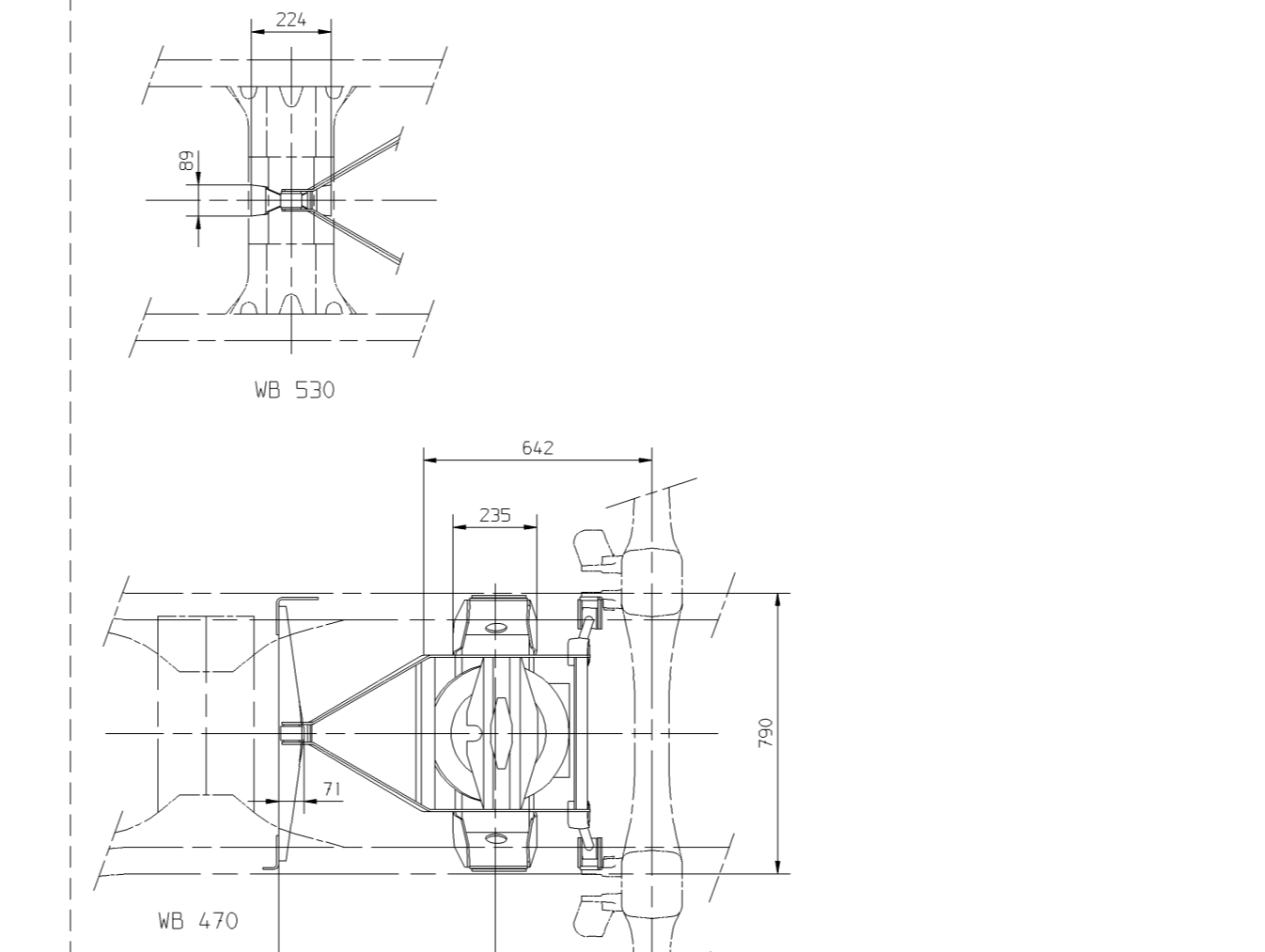
FTR 21-FAR 21+31-FAX CF85 21



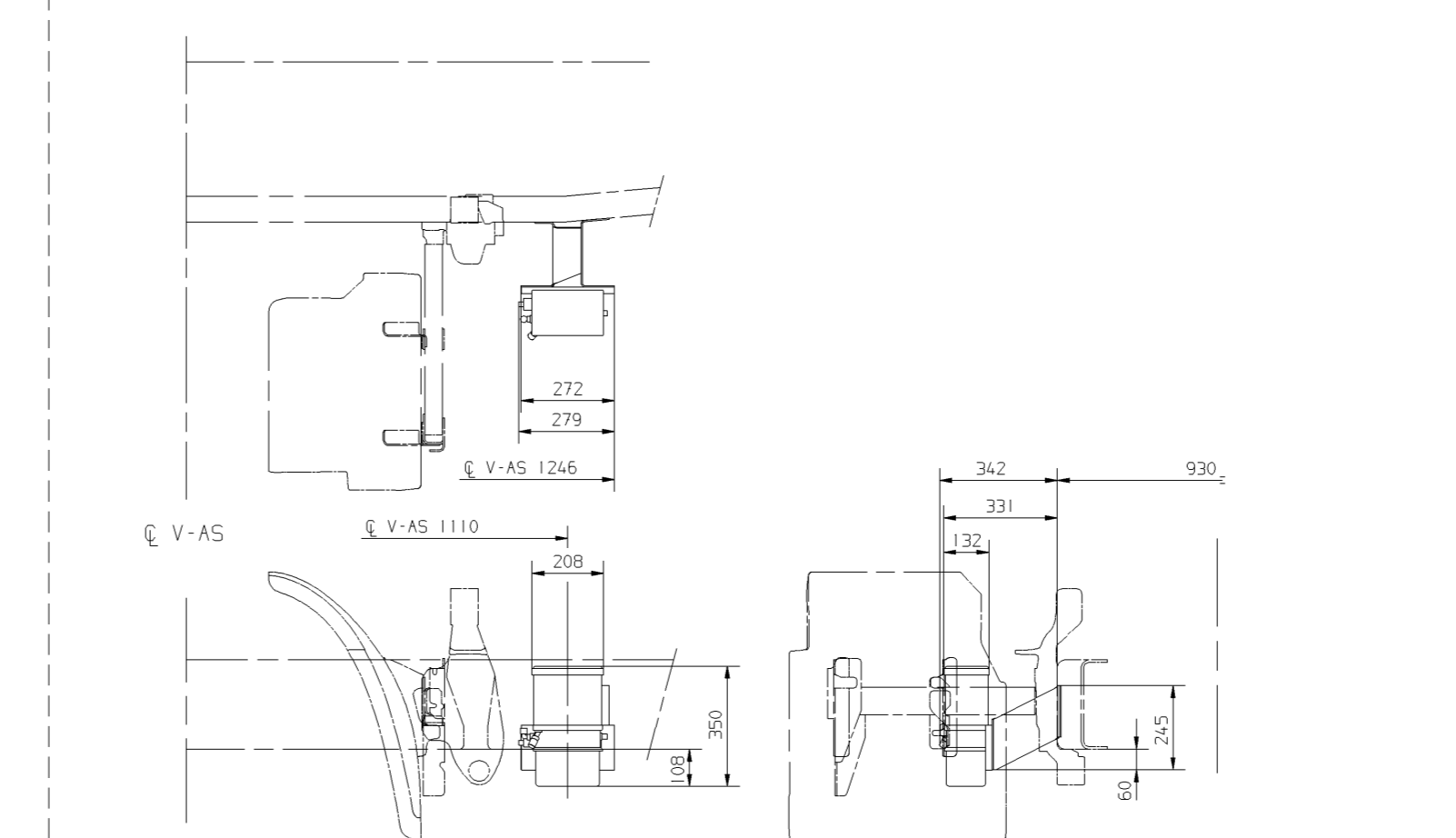
DETAIL: W
FTG 21 - FAG CF75/85 21



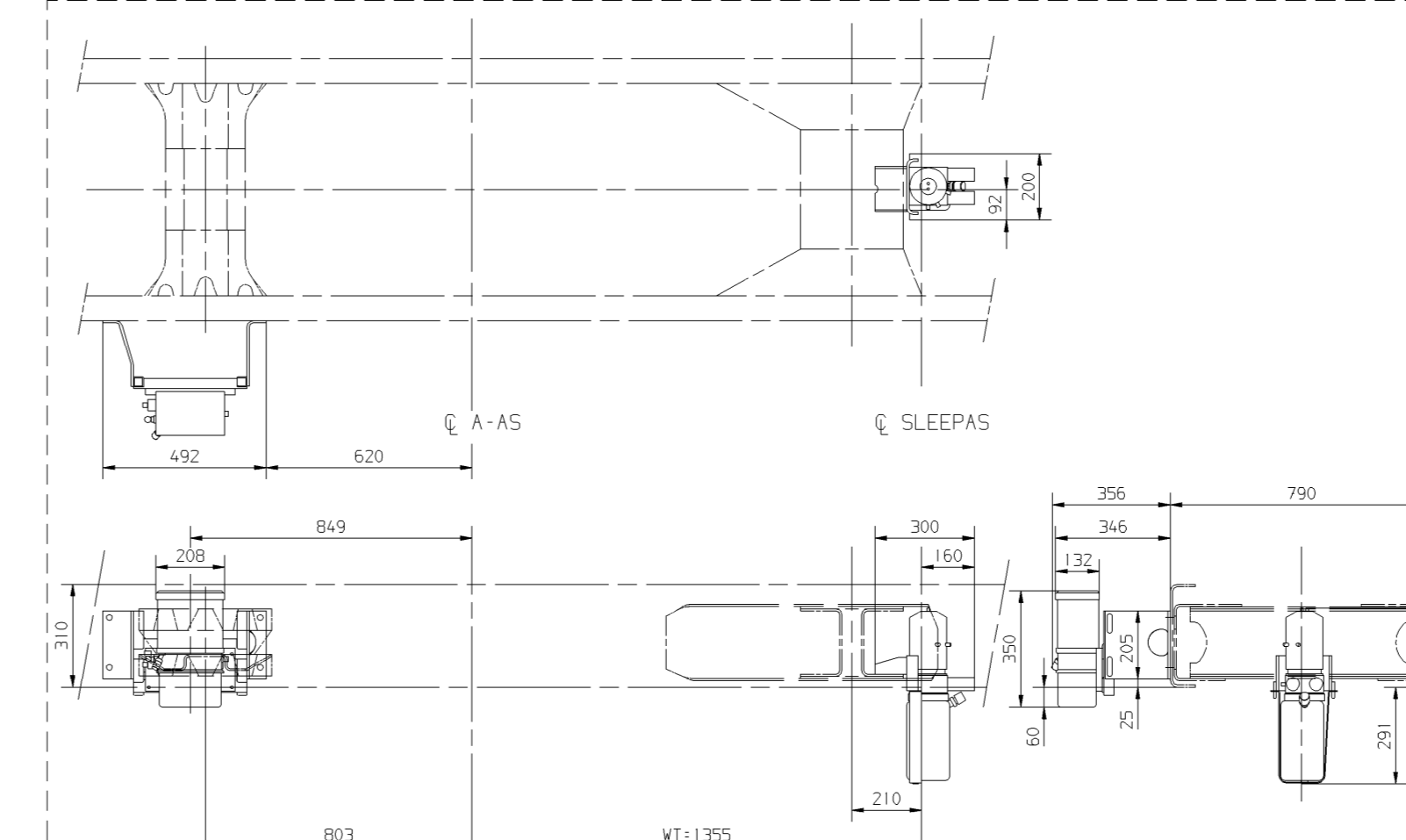
FTM



DETAIL: W
WB 530



FA 31-FAS/R/N 31



FAS CF75/85 11-FAC CF85 11

GEEN MATEN VAN TEKENING OPMETEN.
WIJZIGINGEN ZONDER VOORAFGAANDE KENNISGEVING VOORBEHOUDEN.
VOOR UITVOERING VAN HET VOERTUIG RAADPLEG
MEN DE ORDERBEVESTIGING.
VOOR AFMETINGEN VAN DE LANGSLIGGERS ZIE DETAIL:B.

DO NOT SCALE DRAWING.
SUBJECT TO MODIFICATION WITHOUT PRIOR NOTICE.
PLEASE SEE NOTE FOR DEFINITE VEHICLE LAY-OUT.
FOR THE SECTIONAL DIMENSIONS OF THE MAIN GIRDERS,
SEE DETAIL:B.

NE RIEN RELEVER DU DESSIN.
SOUS RESERVE DE MODIFICATIONS SANS AVIS PREALABLE.
VEUILLEZ CONSULTER LE BON DE COMMANDE
POUR L'EQUIPEMENT DU VEHICULE CONCERNE.
EN CE QUI CONCERNE LA SECTION DES LONGERONS VOIR DETAIL:B.

KEINE ZEICHNUNGSMASSE AUFMESSEN.
ANDERUNGEN OHNE VORANKUNDIGUNG VORBEHALTEN.
DIE AUSFUHRUNG DES BETREFFENDEN FAHRZUEGS
ENTNEHME MAN DER AUFTRAGSBESTATIGUNG.
FUR DIE SCHNITTMASSE DER LANGSTRAGER SIEHE DETAIL:B.

DETAILS V + W

"D" = DAGKABINE
DAY CAB
CABINE COURTE
NORMAUFFAHRERHAUS

"SL" = SLAAPKABINE
SLEEPER KAB
CABINE PROFONDE
FERNFÄHRERHAUS

"SH" = SLAAPHOOGKABINE
HIGH-ROOF SLEEPER KAB
CABINE PROFONDE SURELEVÉE
GRÖßRAUFERNFÄHRERHAUS

Q V-AS = Q-VOORAS
-FRONT AXLE
-ESSIEU AVANT
-VORDERACHSE

Q A-AS = Q-ACHTERAS
-REAR AXLE
-ESSIEU ARRIERE
-HINTERACHSE

Q TANDEM = Q-TANDEM
-TANDEM
-TANDEM
-TANDEM

1) = BLADVERING - VOOR + ACHTER
LEAF SUSPENSION - FRONT + REAR
SUSPENSION A LAMES - AVANT + ARRIERE
BLATTFEDERUNG - VORN + HINTEN

2) = BLADVERING - VOOR + LUCHTVERING - ACHTER
LEAF SUSPENSION - FRONT + AIR SUSPENSION - REAR
SUSPENSION A LAMES - AVANT + SUSPENSION PNEUMATIQUE - ARRIERE
BLATTFEDERUNG - VORN + LUFTFEDERUNG - HINTER

3) = LUCHTVERING - VOOR + ACHTER
AIR SUSPENSION - FRONT + REAR
SUSPENSION PNEUMATIQUE - AVANT + ARRIERE
LUFTFEDERUNG - VORN + HINTEN

Q-SLEEPAS = Q-TRAILLING AXLE
-ESSIEU FOU
-NACHLAUFACHSE

Q-KAB = Q-KABINE
-KAB
-CABINE
-FAHRERHAUS

general tolerances	tolerance principle	title	date	drawn by	auth. by	mod.no.	issue
		DETAILS V + W CF75/85 + XF105	080707	RBO		10663	04
			090225	RBO		10663	03
			070416	RBO		10663	02
			060918	RBO		10663	01

modification description	date	drawn by	auth. by	mod.no.	issue
- FTR CF85 toegevoegd.(lmg. N0973) - FAN CF75/85 LHD RZV toegevoegd.(lmg N0969A) - FAN CF75 RHD LZV toegevoegd.(lmg N0969B) - FAX CF85 RHD toegevoegd.(lmg. N09491)	080707	RBO		10663	04
- FTG CF85/XF105 WB398 toeg.(lmg. N0953-01) - FAR CF75 WB460 BDF-uitv. toeg.(O.M.R. 63951) - FAG CF75 WB430 LHD roeffilter toeg.(pr.10841) - FA-FAS/R/N AVS-pomp toeg.(Lay-out!)	090225	RBO		10663	03
* Voertuigserie's FTT-FATFAD-FAC CF - FAX CF - FTM XF -FAK XF en FTG/FTP XF pr.10820 toegevoegd.(pr. 10680-10820)	060918	RBO		10663	01

authorised by	date	prod.grp spec.	spec. indicat.	third angle projection	sheet	model number
R. Bosmans	060328				1 of 1	1668110/04

Project: 10680 + 10820+10841

Scale: SP 1:20

Source: replaced by CAD LinGraphics II