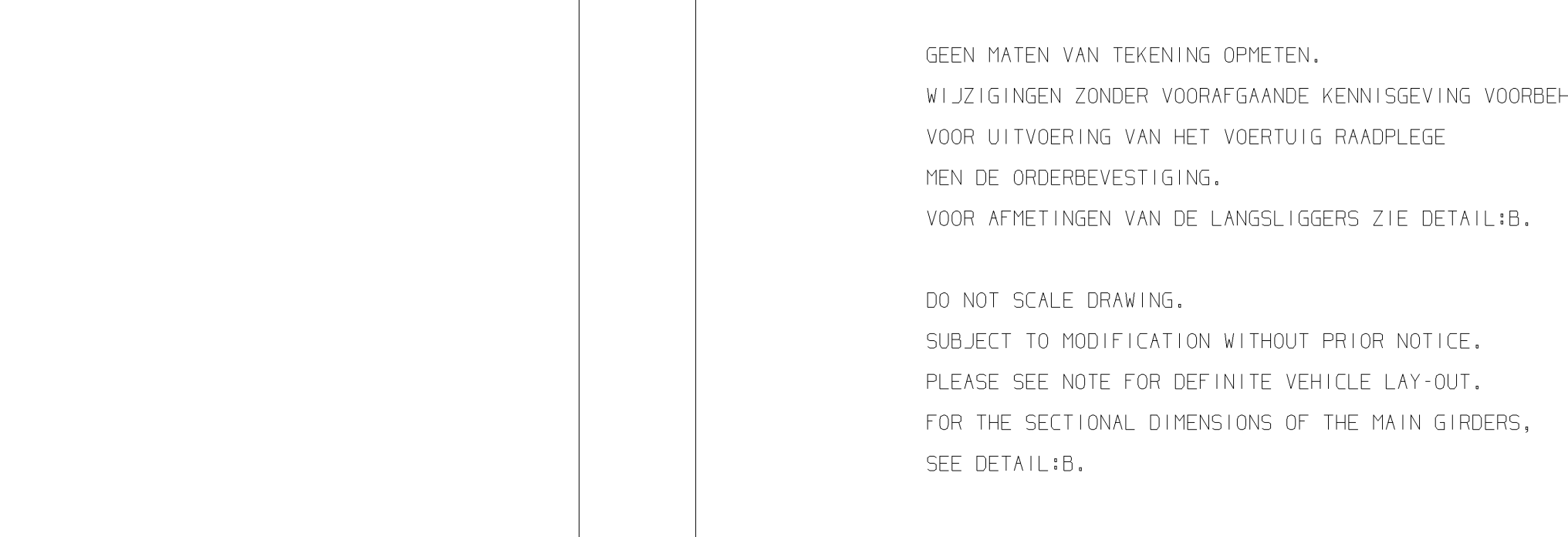
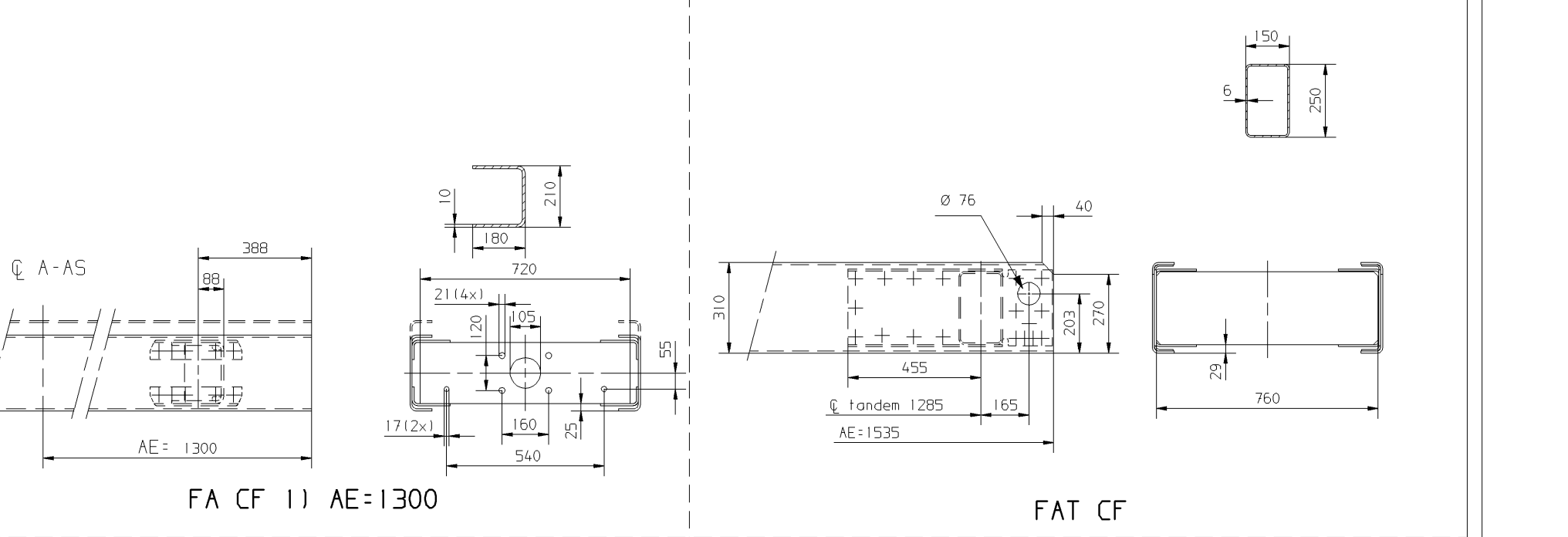
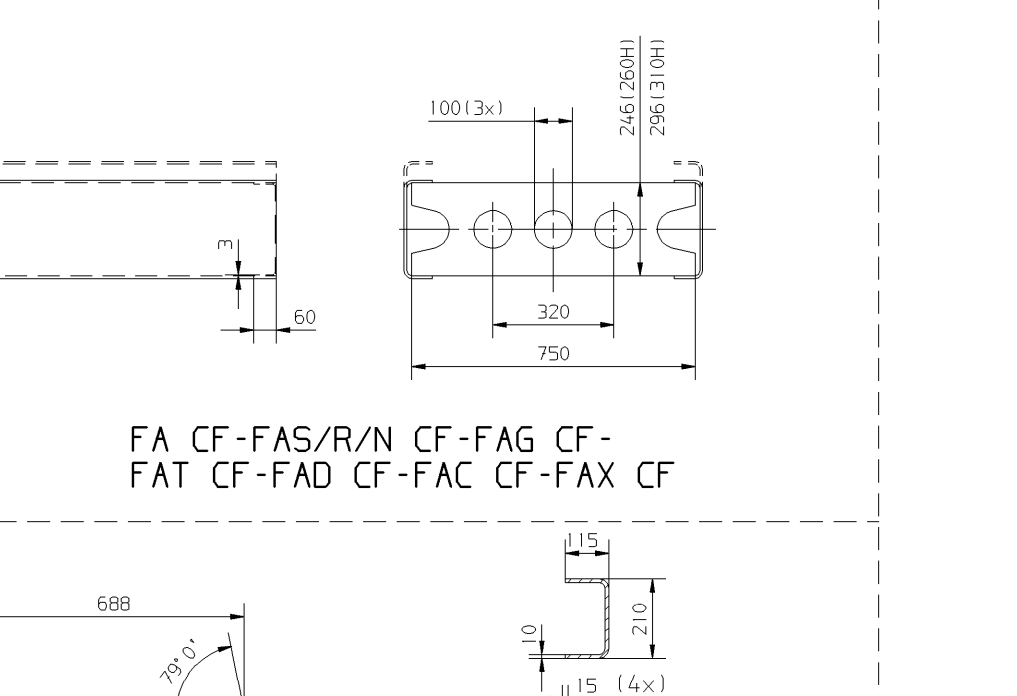
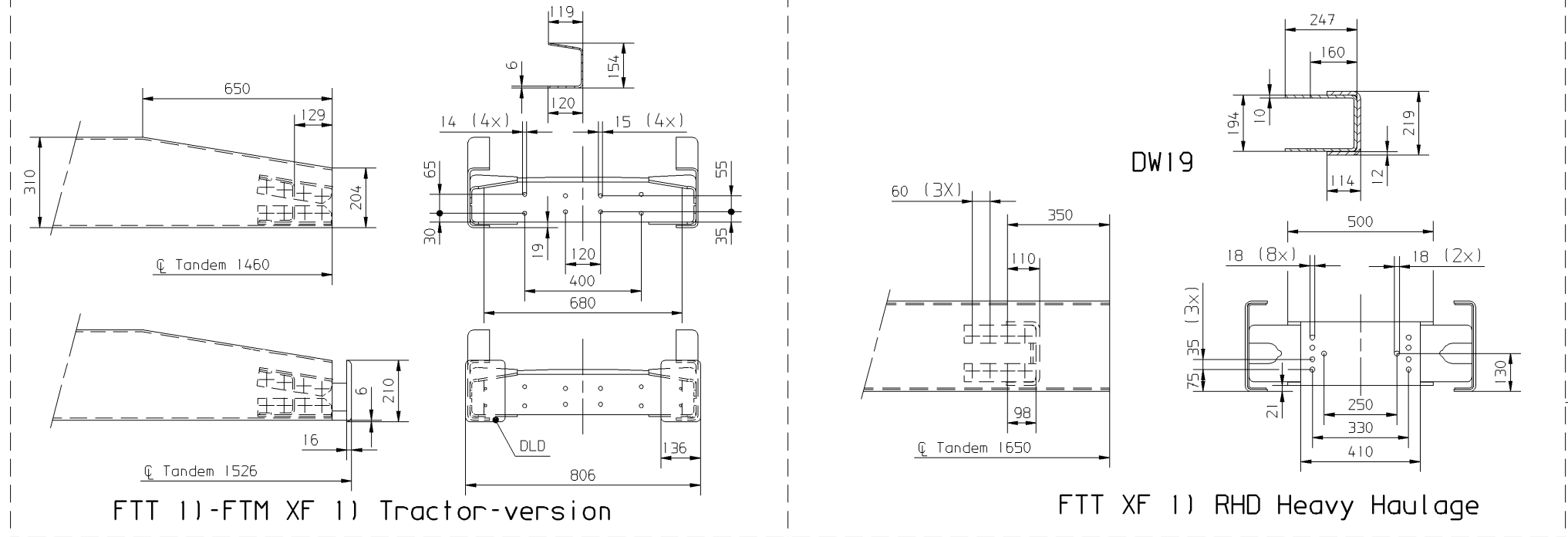
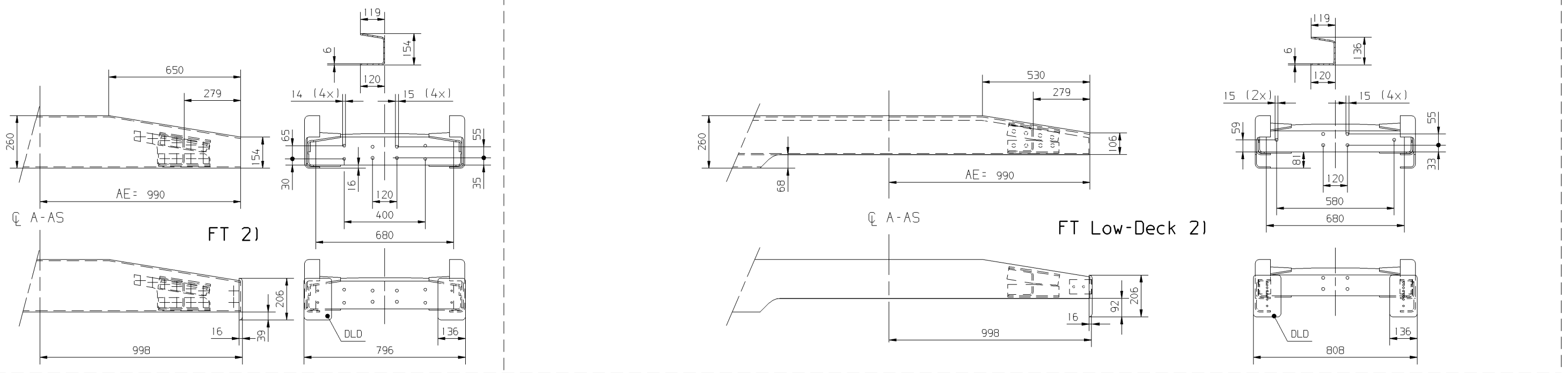
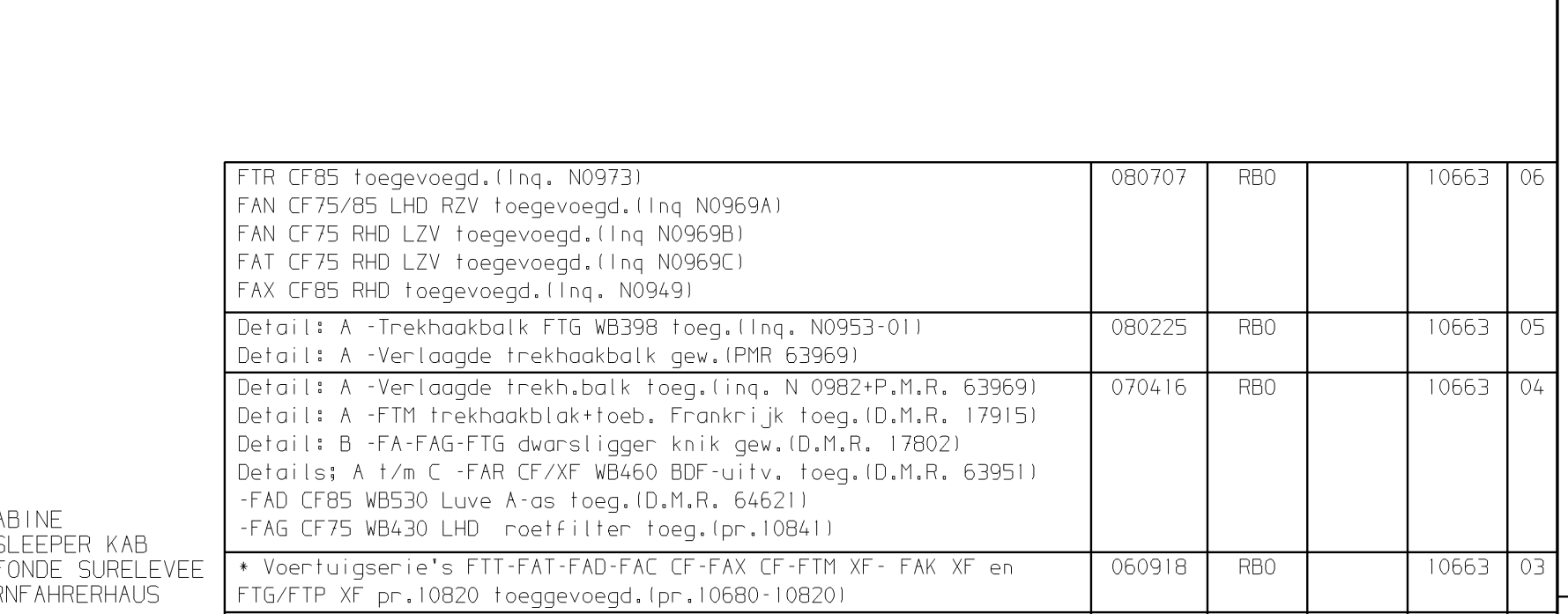
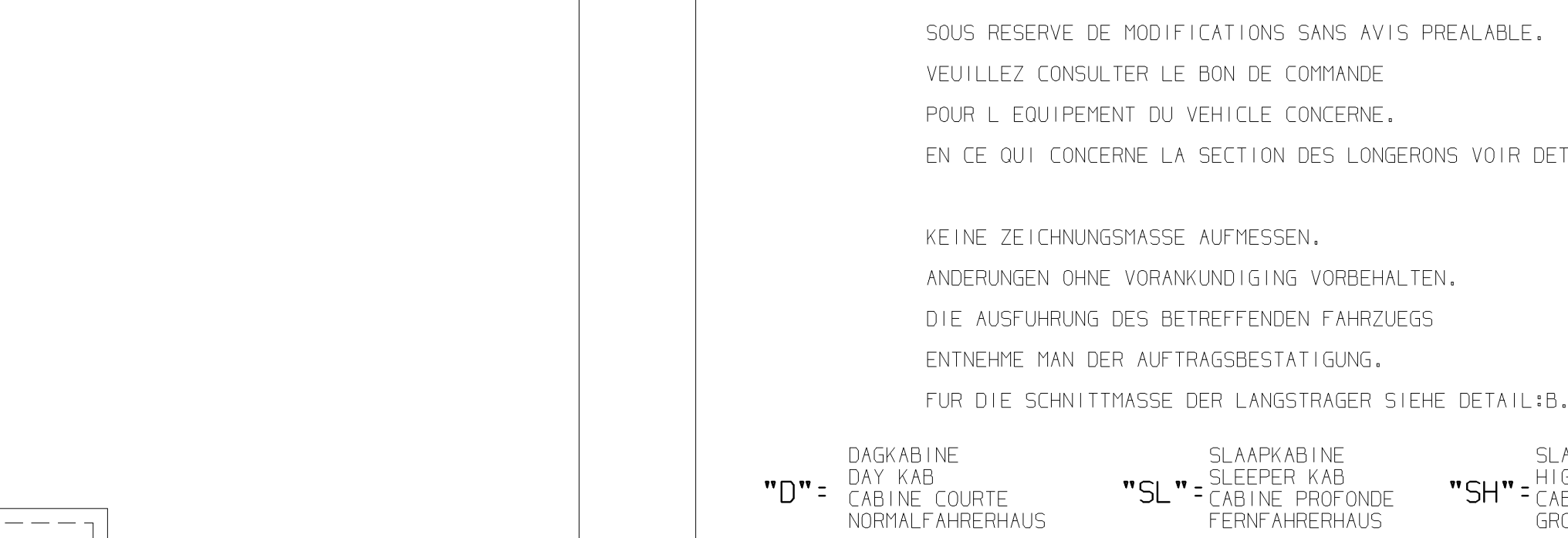
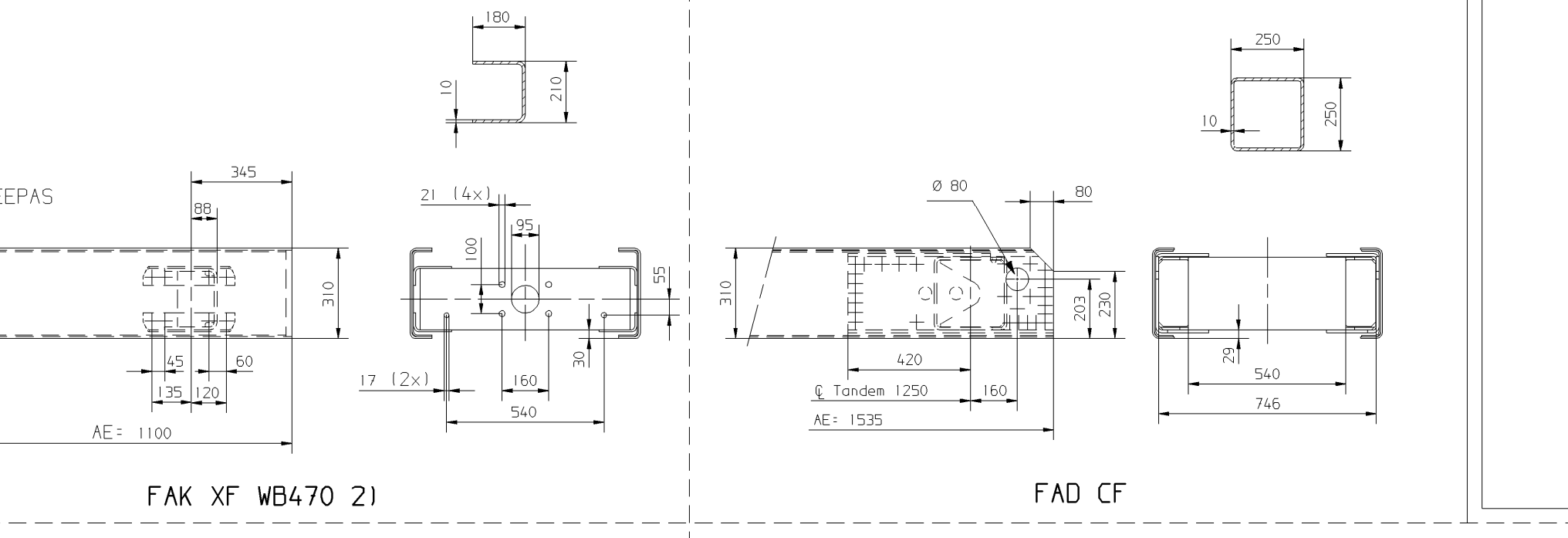
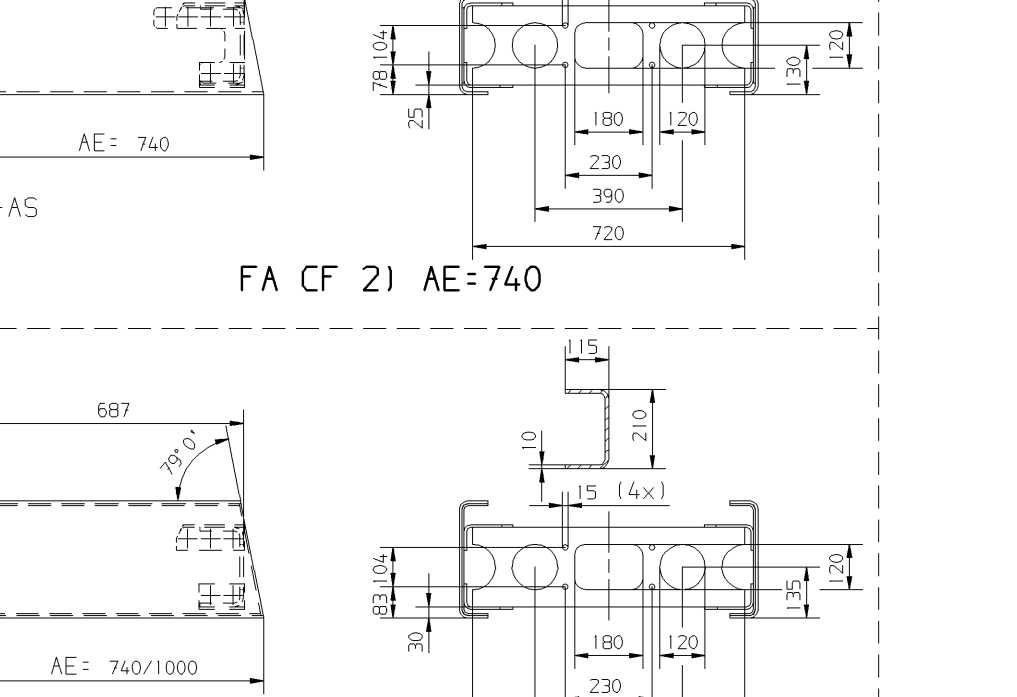
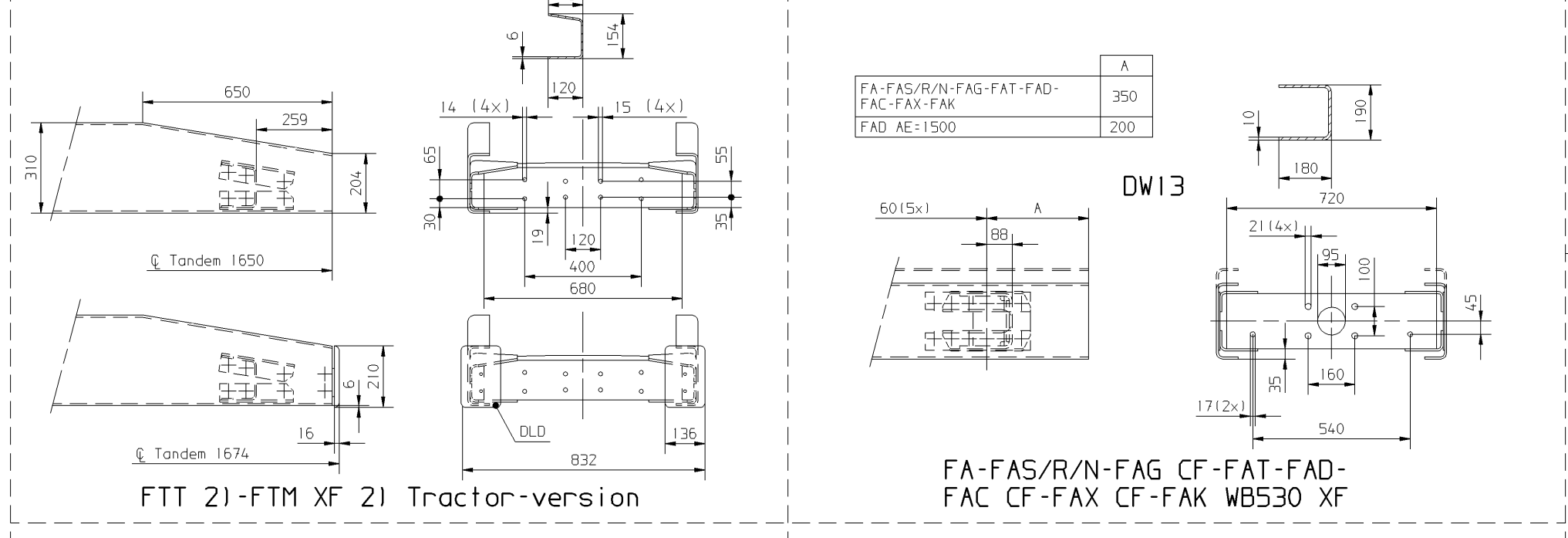
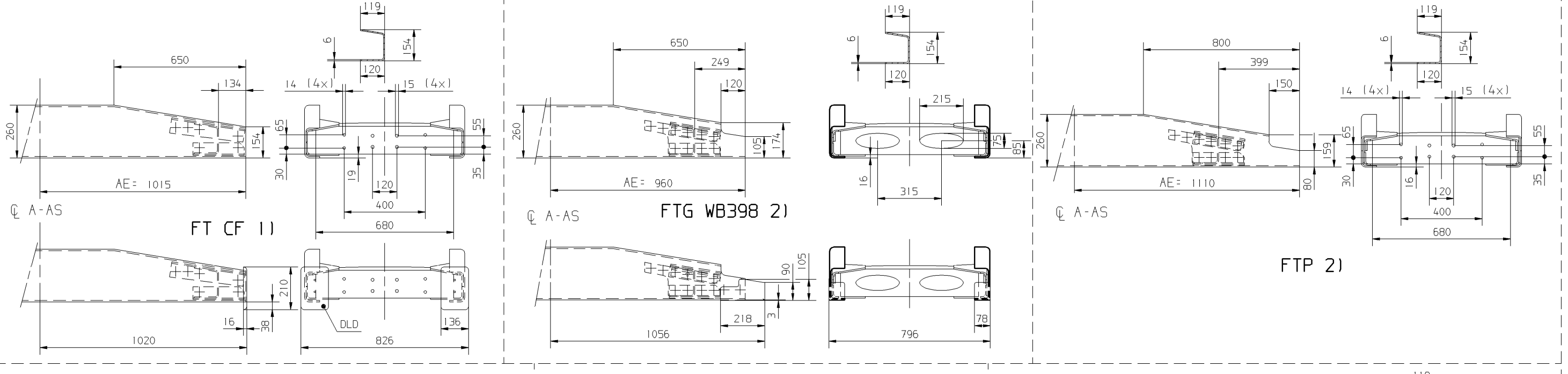


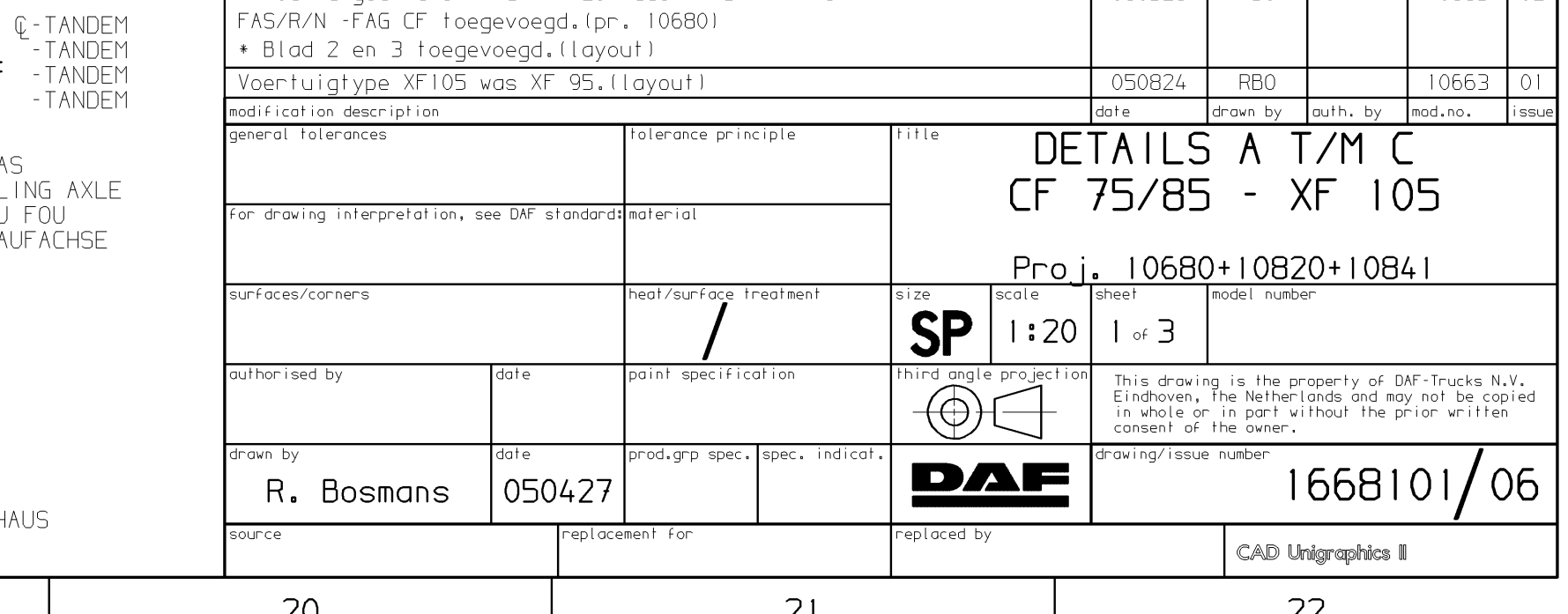
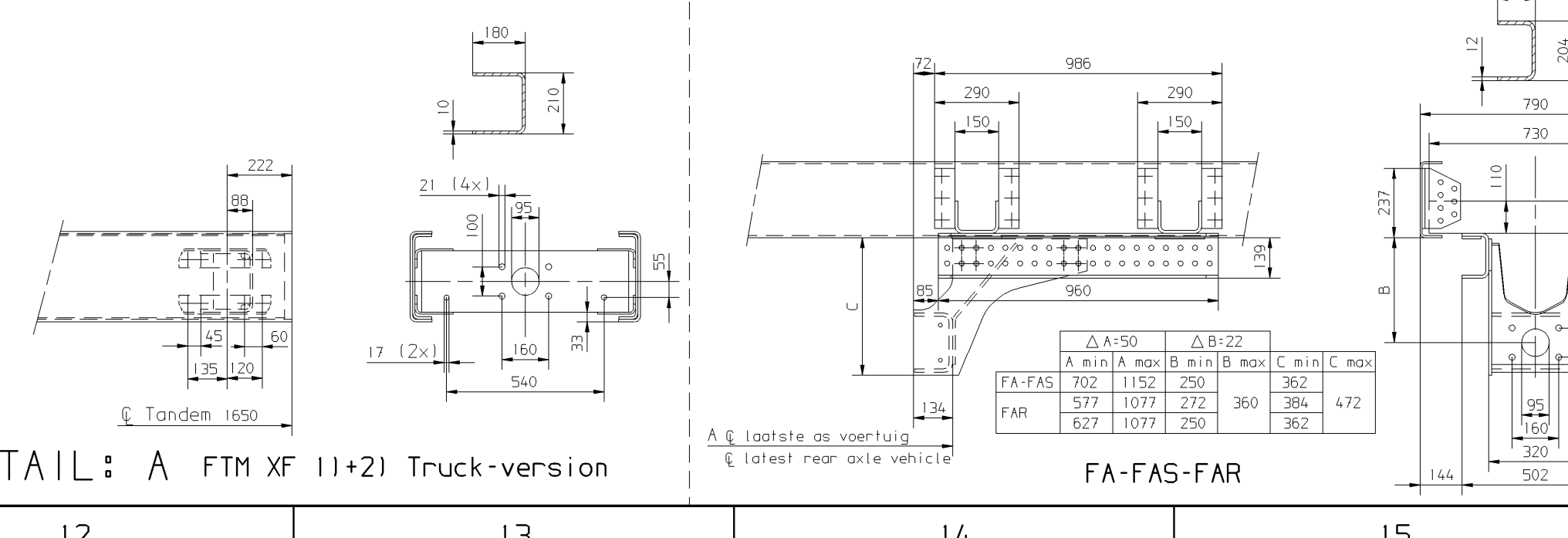
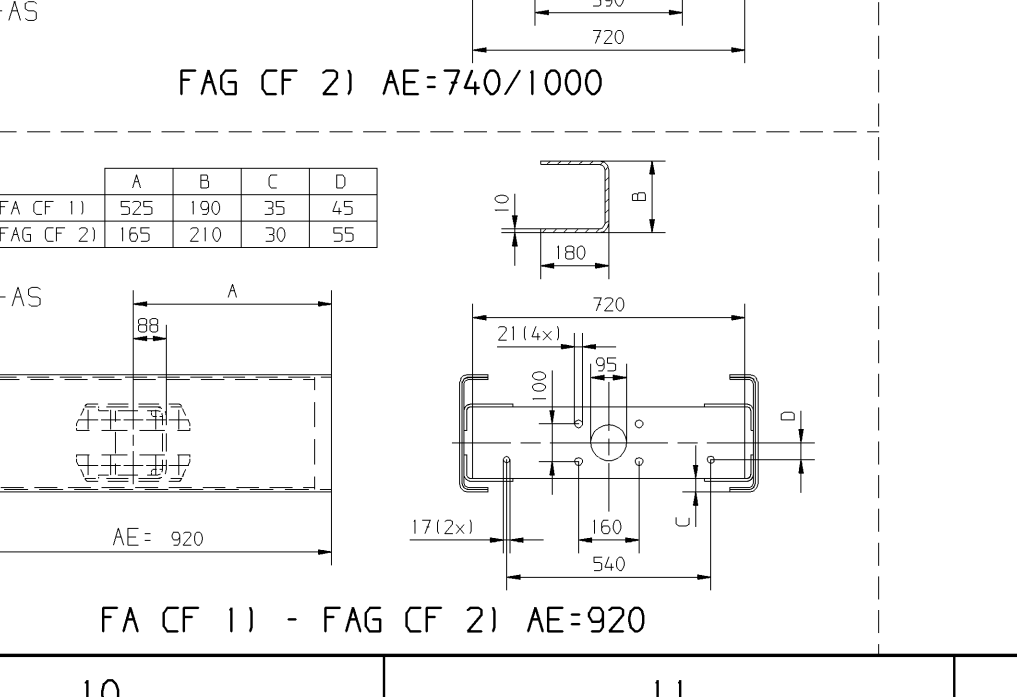
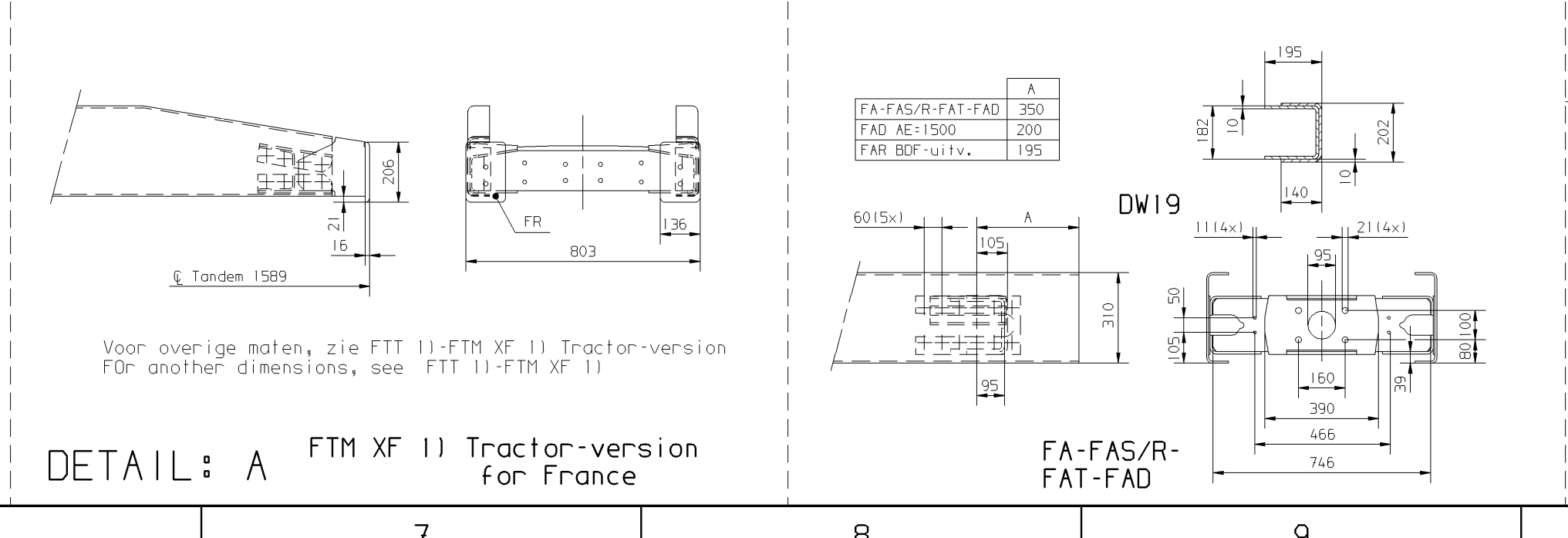
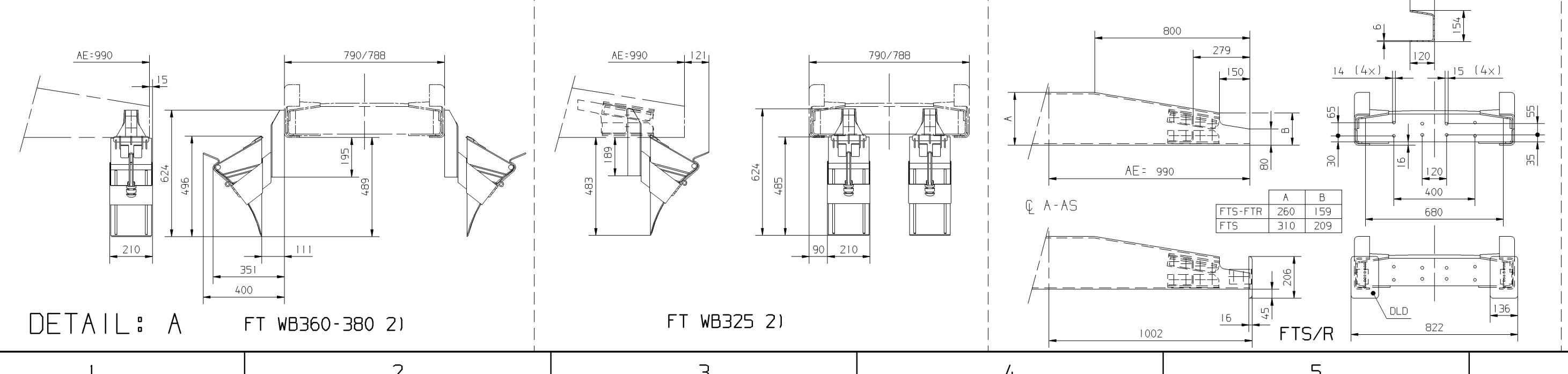
A



B



C



GEEN MATEN VAN TEKENING OPMETEN.
WIJZIGINGEN ZONDER VOORAFGAANDE KENNISGEVING VOORBEHOUDEN.
VOOR UITVOERING VAN HET VOERTUIG RAADPLEG
MEN DE ORDERBEVESTIGING.
VOOR AFMETINGEN VAN DE LANGSLIGGERS ZIE DETAIL:B.

DO NOT SCALE DRAWING.
SUBJECT TO MODIFICATION WITHOUT PRIOR NOTICE.
PLEASE SEE NOTE FOR DEFINITE VEHICLE LAY-OUT.
FOR THE SECTIONAL DIMENSIONS OF THE MAIN GIRDERS,
SEE DETAIL:B.

NE RIEN RELEVIER DU DESSIN.
SOUS RESERVE DE MODIFICATIONS SANS AVIS PREALABLE.
VEUILLEZ CONSULTER LE BON DE COMMANDE
POUR L'EQUIPEMENT DU VEHICULE CONCERNE.
EN CE QUI CONCERNE LA SECTION DES LONGERONS VOIR DETAIL:B.

KEINE ZEICHNUNGSMASSE AUFMESSEN.
ANDERUNGEN OHNE VORANKUNDIGUNG VORBEHALTEN.
DIE AUSFUHRUNG DES BETREFFENDEN FAHRZUEGS
ENTNEHME MAN DER AUFTRAGSBESTATIGUNG.
FUR DIE SCHNITTMASSE DER LANGSTRAGER SIEHE DETAIL:B.

"D" = DAGKABINE DAY KAB CABINE COURTE NORMALFAHRERHAUS
"SL" = SLAAPKABINE SLEEPER KAB CABINE PROFONDE FERNFAHRERHAUS
"SH" = SLAAPHOOGKABINE HIGH-ROOF SLEEPER KAB CABINE PROFONDE SURELEVÉE GROBRUIMFAHRERHAUS

1) = BLADVERING - VOOR + ACHTER LEAF SUSPENSION - FRONT + REAR SUSPENSION A LAMES - AVANT + ARRIERE BLATTFEDERUNG - VORN + HINTEN
2) = BLADVERING - VOOR + LUCHTVERING - ACHTER LEAF SUSPENSION - FRONT + AIR SUSPENSION - REAR SUSPENSION A LAMES - AVANT + SUSPENSION PNEUMATIQUE - ARRIERE BLATTFEDERUNG - VORN + LUFTFEDERUNG - HINTER
3) = LUCHTVERING - VOOR + ACHTER AIR SUSPENSION - FRONT + REAR SUSPENSION PNEUMATIQUE - AVANT + ARRIERE LUFTFEDERUNG - VORN + HINTEN

1) = SLEEPAS = -TRAILLING AXLE -ESSIEU FOU -NACHLAUFACHSE
2) = SLEEPAS = -TRAILLING AXLE -ESSIEU FOU -NACHLAUFACHSE

1) = V-AS = -FRONT AXLE -ESSIEU AVANT -VORDERACHSE
2) = V-AS = -FRONT AXLE -ESSIEU AVANT -VORDERACHSE
3) = V-AS = -FRONT AXLE -ESSIEU AVANT -VORDERACHSE

1) = A-AS = -REAR AXLE -ESSIEU ARRIERE -HINTERACHSE
2) = A-AS = -REAR AXLE -ESSIEU ARRIERE -HINTERACHSE
3) = A-AS = -REAR AXLE -ESSIEU ARRIERE -HINTERACHSE

1) = TANDEM = -TANDEM -TANDEM -TANDEM
2) = TANDEM = -TANDEM -TANDEM -TANDEM
3) = TANDEM = -TANDEM -TANDEM -TANDEM

1) = K-AB = -KABINE -KABINE -FAHRERHAUS
2) = K-AB = -KABINE -KABINE -FAHRERHAUS
3) = K-AB = -KABINE -KABINE -FAHRERHAUS

FTR CF85 toegevoegd.(l.nq. N09731) FAN CF75/85 LHD RZV toegevoegd.(l.nq N0969A) FAN CF75 RHD L2V toegevoegd.(l.nq N0969B) FAT CF75 RHD L2V toegevoegd.(l.nq N0969C) FAX CF85 RHD toegevoegd.(l.nq. N09491)	080707	RBO	10663	06
Detail: A -Trekhaakbalk FTG WB398 Toeg.(l.nq. N0953-01) Detail: A -Verlaagde trekhaakbalk gew.(IPR 63969)	080225	RBO	10663	05
Detail: A -Verlaagde trekhaakbalk Toeg.(l.nq. N 0982+P.M.R. 63969) Detail: A -FTM As-Trekhaakblok Toeg. Frankrijk Toeg.(D.M.R. 17915) Detail: B -FA-FAG-FTG dwarsligger knik gew.(D.M.R. 17802) Detail: A t/m C -FAR CF/XF WB460 BDF-uitv. Toeg.(D.M.R. 63951) -FAD CF85 WB530 Luvé A-as Toeg.(D.M.R. 64621) -FAG CF75 WB430 LHD roefilter Toeg.(pr.10841)	070416	RBO	10663	04
* Voertuigserie's FTT-FAT-FAD-FAC CF-FAX CF-FTM XF - FAK XF en FTG/FTP XF pr.10820 toegevoegd.(pr.10680-10820)	060918	RBO	10663	03
* Voertuigserie's FT CF-FT Low-deck-FTG/P - FTS - FTR XF - FA-FAS/R/N -FAG CF toegevoegd.(pr. 10680)	060328	RBO	10663	02
* Blad 2 en 3 toegevoegd.(layout)				
Voertuigtype XF105 was XF 95.(layout)	050824	RBO	10663	01

general tolerances		tolerance principle		title	
for drawing interpretation, see DAF standard material				DETAILS A T/M C CF 75/85 - XF 105	
surfaces/corners		heat/surface treatment		size	
		/		SP 1:20	
authorised by		date		sheet	
R. Bosmans		050427		1 of 3	
drawn by		date		model number	
				1668101/06	
prod.grp spec. spec. indicat.		replaced by		drawing/issue number	
				1668101/06	
source		replaced by		CAD lithography #	