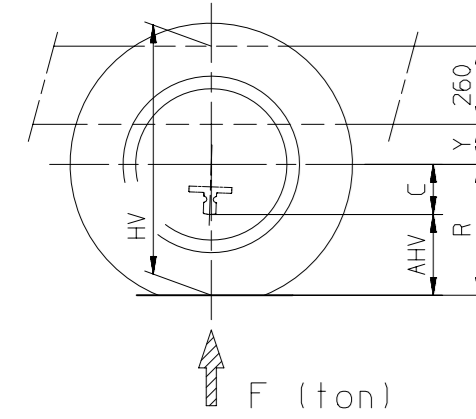


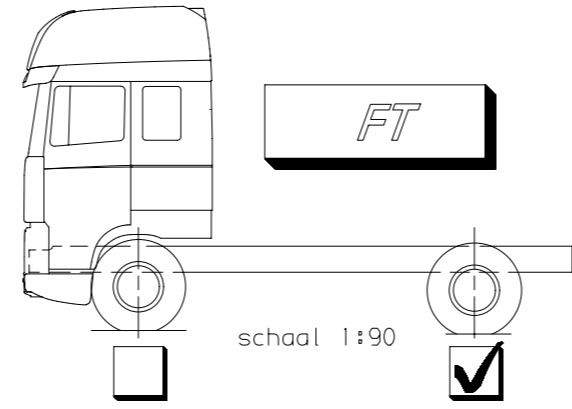
- 1) = Bladveer VOOR + ACHTER
Leaf suspension FRONT + REAR
- 2) = Bladveer VOOR + Luchtvering ACHTER
Leaf suspension FRONT + Air suspension REAR
- 3) = Luchtvering VOOR + ACHTER
Air suspension FRONT + REAR

Bladvering VOOR / Leaf suspension FRONT				
Ophanging + Vooras Suspension + Front axle	Y (mm)	C (mm)	Voertuigtype Vehicle type	
75 kN leaf + 162W	$162 + [15,23 \times (7,5 - F)]$	214	FT CF 2)	Option codes 01769: Front axle load 7,50 t 06541: Front axle suspension light AUST.
80 kN leaf + 162W	$153 + [21,94 \times (8 - F)]$		FT CF 2)	Option codes 01954: Front axle load 8,00 t 06540: Front axle suspension normal TAIWAN



$$HV = R + Y + 260$$

$$AHV_{(min.)} = R - C$$



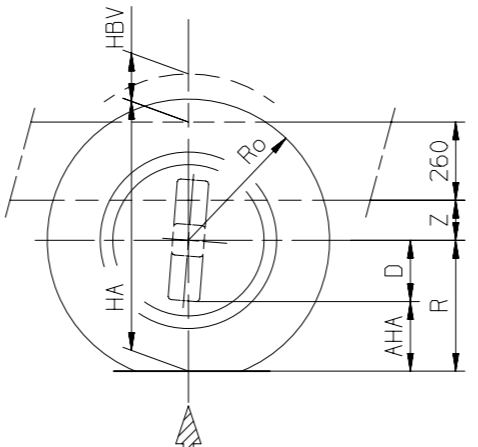
- 1) = Bladveer VOOR + ACHTER
Leaf suspension FRONT + REAR
- 2) = Bladveer VOOR + Luchtvering ACHTER
Leaf suspension FRONT + Air suspension REAR
- 3) = Luchtvering VOOR + ACHTER
Air suspension FRONT + REAR

(y.o.y.)

As ijzer op ijzer
Axle metal on metal

Option code 06128: Single driving height position, standard height

Luchtvering ACHTER / Air suspension REAR "rear axle 1344/1347"						
Ophanging + Achteras Suspension + Rear axle	Rijstand Driving position	Z (mm)	Lage stand Low position	Z (mm)	Hoge stand High position	Z (mm/mm)
130 kN air + $\left\{ \begin{array}{l} 1344 \\ 1347 \end{array} \right\}$	212		140		342	$\left\{ \begin{array}{l} 256 \\ 285 \end{array} \right\}$
						D
						Z (y.o.y.) (mm)
						Voertuigtype Vehicle type
						FT 2)



$$HA = R + Z + A$$

$$HBV_{(max.)} = R_o - 260 - Z_{(y.o.y.)}$$

$$AHA_{(min.)} = R - D$$

GEEN MATEN VAN TEKENING OPMETEN.
WIJZIGINGEN ZONDER VOORAFGAANDE KENNISGEVING VOORBEHOUDEN.
VOOR UITVOERING VAN HET VOERTUIG RAADPLEGE MEN DE ORDERBEVESTIGING.

DO NOT SCALE DRAWING.
SUBJECT TO MODIFICATION WITHOUT PRIOR NOTICE.
PLEASE SEE NOTE FOR DEFINITE VEHICLE EXECUTION.

NE RIEN RELEVER DU DESSIN.
SOUS RESERVE DE MODIFICATIONS SANS AVIS PREALABLE.
VEUILLEZ CONSULTER LE BON DE COMMANDE POUR L'EQUIPEMENT
DU VEHICULE CONCERNE.

KEINE ZEICHNUNGSMASSE AUFMESSEN.
AENDERUNGEN OHNE VORANKUNDIGUNG VORBEHALTEN.
DIE AUSFUHRUNG DES BETREFFENDEN FAHRZEUGS ENTNEHME
MAN DER AUFTRAGSBESTAETIGUNG.

Configuration vehicle
CF FT E6 L8709A (TAIWAN)
CF FT E5-6 G8709C (AUS.)

Voor belaste(R)- en onbelaste(Ro) bandenstralen en SV-SB-TB-BV-BB maten zie speciale tekening: 1903710.
For rolling radius laden(R) and unladen(Ro) and SV-SB-TB-BV-BB dimensions see special drawing: 1903710.
Pour les rayons des pneumatiques en charge(R) et à vide(Ro) et SV-SB-TB-BV-BB dimensions voir plan no: 1903710.
Für belastete(R) und unbelastete(Ro) Reifenhalbmesser und SV-SB-TB-BV-BB Masse siehe Zeichnung: 1903710.

modification description	tolerance principle	title	date	mod.by	issue
general tolerances	①	VEHICLE HEIGHTS			
TKB 00801-050		CF FT EURO 5-6			
surfaces/corners	heat/surface treatment	size	scale	sheet	model number
	/	SP	1:30	1 of 1	
authorised by	date	part specification	third angle projection	This drawing is the property of DAF-Trucks N.V., Eindhoven, the Netherlands and may not be copied in whole or in part without the prior written consent of the owner.	
drawn by	date	prod.grp spec. spec. indicat.		drawing/issue number	
V. Patil	190510			1903689/00	
source	replacement for	replaced by			CAD Unigraphics II