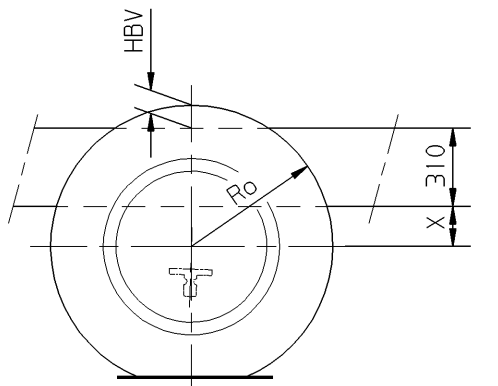
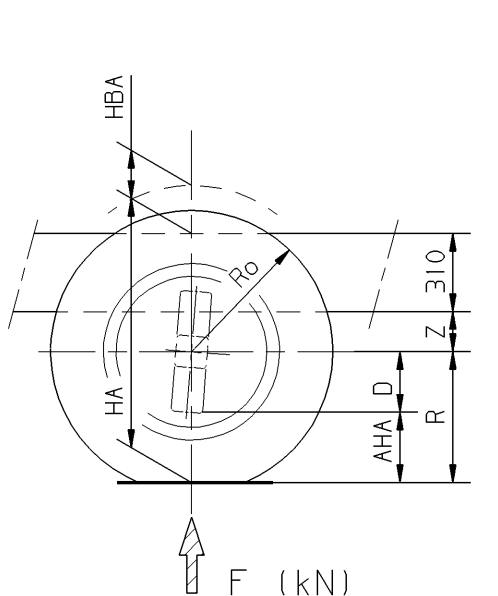


HV=R+Y+310
AHV_(min.)=R-C



HBV_(max.)=R0-310-X_(y.o.y.)



HA=R+Z+310
HBV_(max.)=R0-310-Z_(y.o.y.)
AHA_(min.)=R-D

| Oph. vooras 1 Suspens. front axle 1 Suspens. essieu avant 1 Aufhaeng. Vorderachse 1 | Voorasbelasting Front axle load Charge essieu avant Achslast vorn | F (kN) | Y (mm) | Vooras 1 Front axle 1 Essieu avant 1 Vorderachse 1 | C (mm) |
|--|--|-----------|------------------|---|-----------|
| Paraboolveer Parabolic spring Ressort parabolique Parabelfeder | 75 kN | 42 | 224 | 152N | 200 |
| | | 42 t/m 75 | 294 - (1,67 x F) | | |
| | | 75 | 169 | | |

| Oph. vooras 2 Suspens. front axle 2 Suspens. essieu avant 2 Aufhaeng. Vorderachse 2 | Vooras 2 Front axle 2 Essieu avant 2 Vorderachse 2 | X _(y.o.y.) (mm) |
|--|---|-------------------------------|
| Luchtvering Air suspension Suspension pneumatique Luftfederung | 74/75 kN | 124 |

(y.o.y.)
Verticale inverting ijzer op ijzer
Spring bottoming metal on metal
Déflexion verticale métal contre métal
Senkrechte Einfederung bis Anschlag
Metall auf Metall

| Oph. achteras Suspens. driver axle Suspens. essieu arriere Aufhaeng. Hinterachse | (Vooras 2) (Front axle 2) (Essieu avant 2) (Vorderachse 2) | Achterasbelasting Rear axle load Charge essieu arriere Hinterachse | F (kN) | Z (mm) | Achteras Rear axle Essieu arriere Hinterachse | D (mm) | Z _(y.o.y.) (mm) |
|---|---|---|-----------|------------------|--|-----------|-------------------------------|
| Paraboolveer Parabolic spring Ressort parabolique Parabelfeder | 115 kN (75 kN) | 21 | 273 | 266 - (0,61 x F) | 1132 | 250 | 102 |
| | | 21 t/m 115 | 1339 | | 261 | 113 | |
| | | 115 | 1354 | | 245 | 97 | |
| Paraboolveer Parabolic spring Ressort parabolique Parabelfeder | 120 kN (74 kN) | 21 | 273 | 266 - (0,61 x F) | 1339 | 261 | 113 |
| | | 21 t/m 120 | 1347 | | 285 | 116 | |
| | | 120 | 1354 | | 245 | 97 | |
| Verkorte achterveer Rear short Ressort arriere court verkorte Hinterfeder | 115 kN (75 kN) | 21 | 267 | 278 - (0,53 x F) | 1132 | 250 | 160 |
| | | 21 t/m 115 | 1339 | | 261 | 161 | |
| | | 115 | 1354 | | 245 | 163 | |
| Verkorte achterveer Rear short Ressort arriere court verkorte Hinterfeder | 120 kN (74 kN) | 21 | 267 | 278 - (0,53 x F) | 1339 | 261 | 161 |
| | | 21 t/m 120 | 1354 | | 245 | 163 | |
| | | 120 | 1354 | | 245 | 163 | |

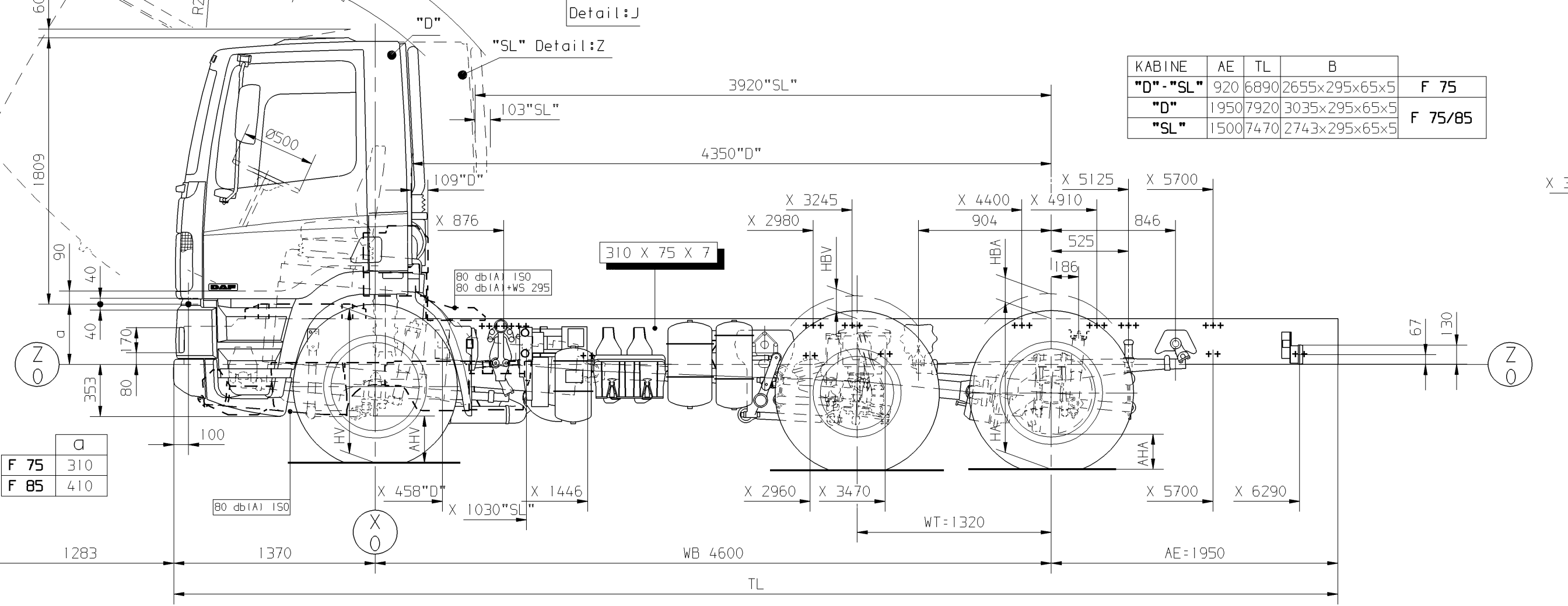
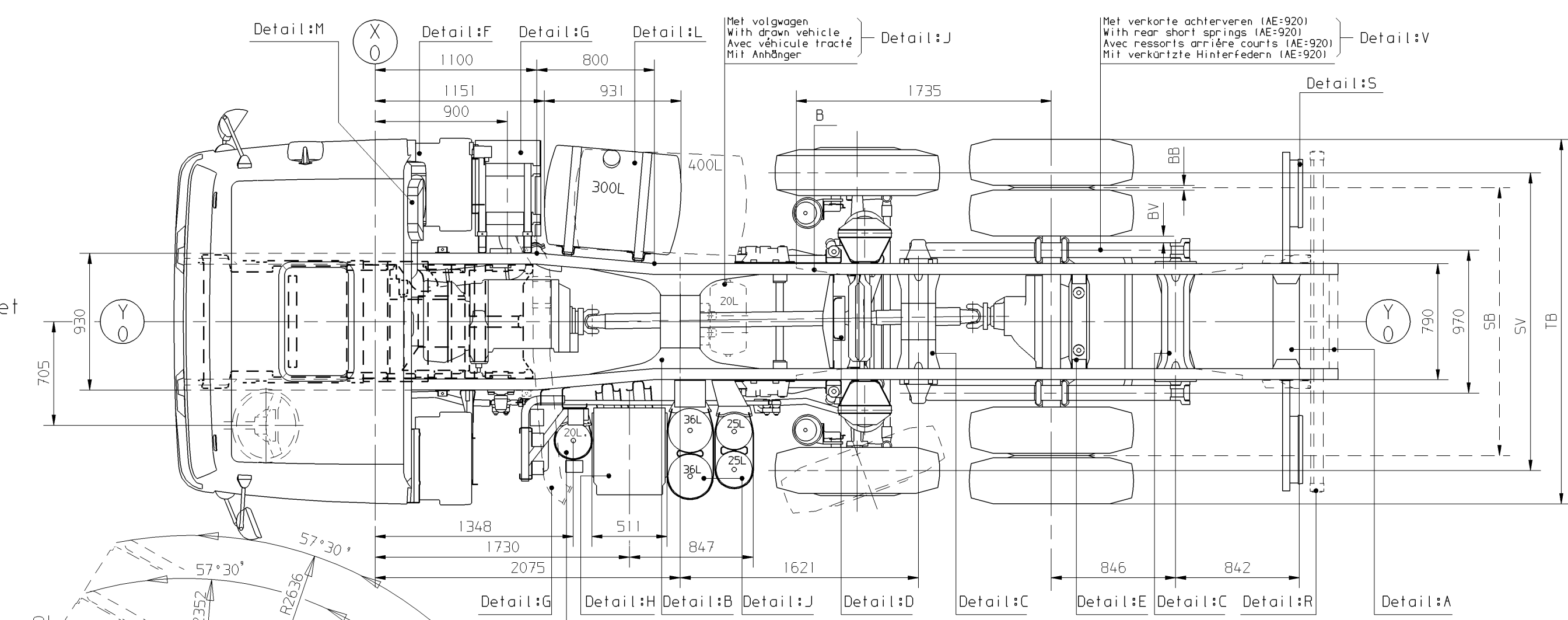
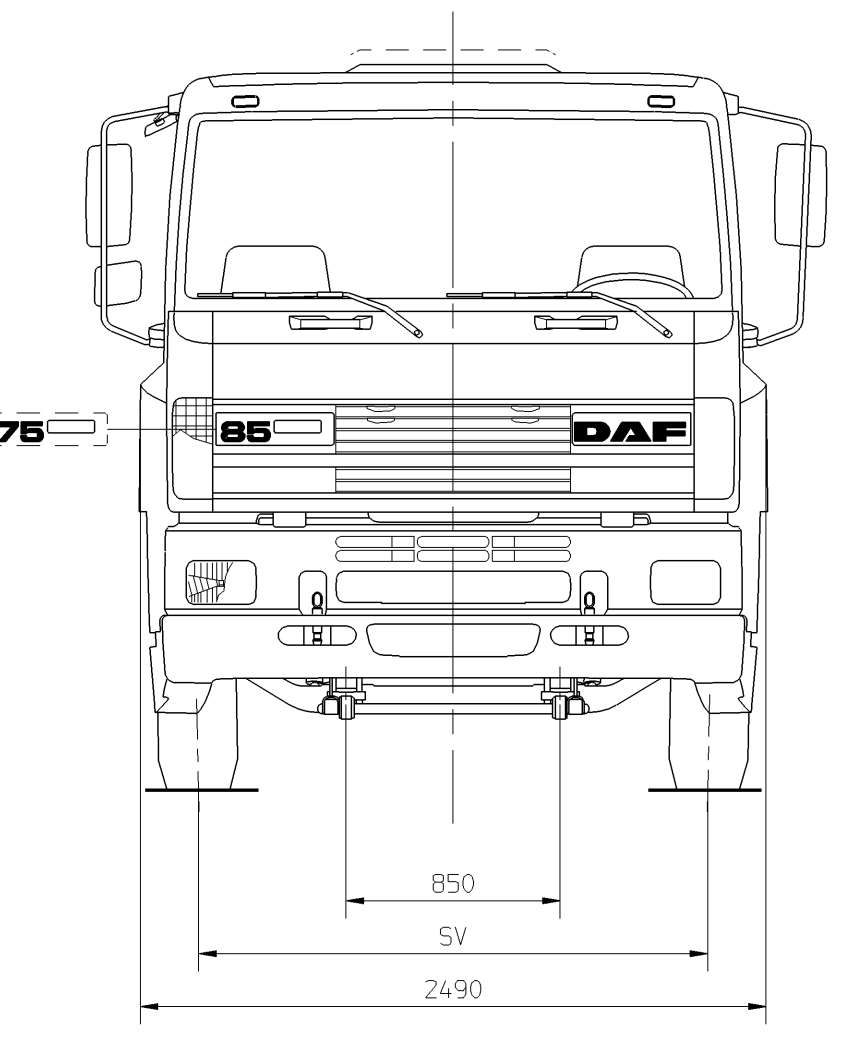
Voor Belaste(R) - en Onbelaste(Ro) bandenstralen en SV-SB-TB-BV-BB maten zie speciale tekening: 1260799.

For rolling radius Laden(R) and Unladen(Ro) and SV-SB-TB-BV-BB dimensions see special drawing: 1260799.

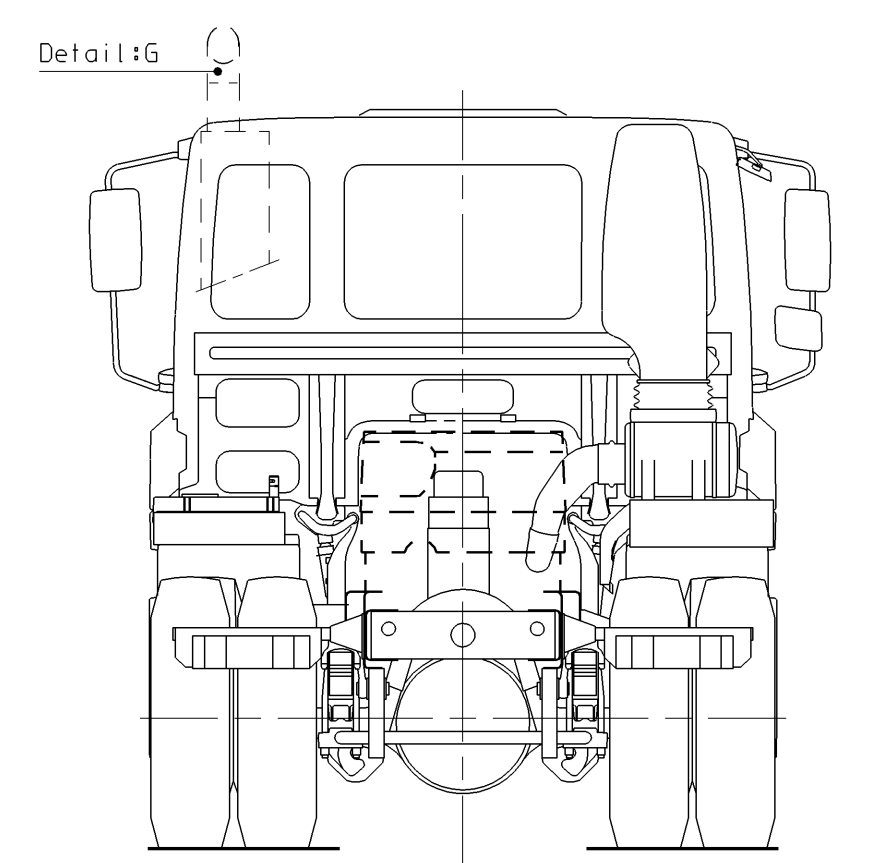
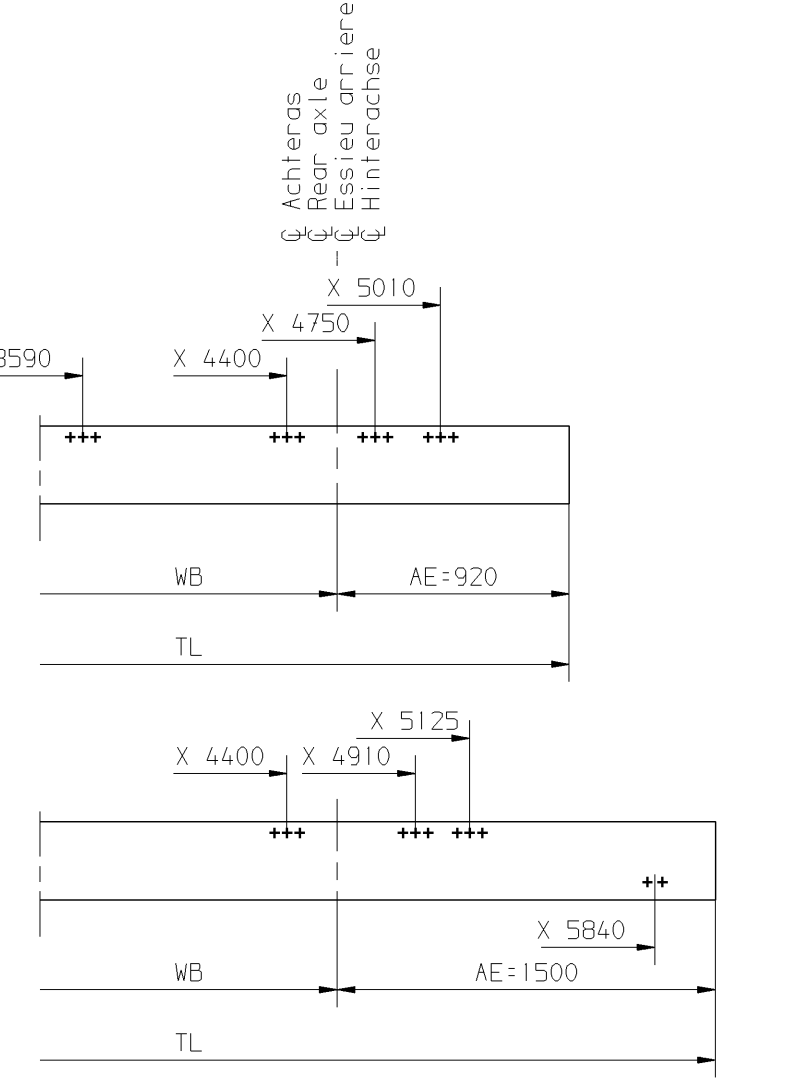
Pour les rayons des pneumatiques en Chargé(R) et a Vide(Ro) et SV-SB-TB-BV-BB dimensions voir plan no: 1260799.

Für belastete(R) und unbelastete(Ro) Reifenhalbmesser und SV-SB-TB-BV-BB Masse siehe Zeichnung: 1260799.

Getekende situatie F85.
Drawing represents F85.
Le plan se rapporte au F85.
Situation auf Zeichnung F85.



| KABINE | AE | TL | B | F |
|-----------|------|------|---------------|---------|
| "D"- "SL" | 920 | 6890 | 2655x295x65x5 | F 75 |
| "D" | 1950 | 7920 | 3035x295x65x5 | F 75/85 |
| "SL" | 1500 | 7470 | 2743x295x65x5 | |



GEEN MATEN VAN TEKENING OPMETEN.
WIJZIGINGEN ZONDER VOORAFGAANDE KENNISGEVING VOORBEHOUDEN.
VOOR UITVOERING VAN HET VOERTUIG RAADPLEGE MEN DE ORDERBEVESTIGING.
VOOR DETAILS ZIE SPECIALE TEKENING : 1260800.

DO NOT SCALE DRAWING.
SUBJECT TO MODIFICATION WITHOUT PRIOR NOTICE.
PLEASE SEE NOTE FOR DEFINITE VEHICLE EXECUTION.
FOR DETAILS SEE SPECIAL DRAWING : 1260800 .

NE RIEN RELEVER DU DESSIN.
SOUS RESERVE DE MODIFICATIONS SANS AVIS PREALABLE.
VEUILLEZ CONSULTER LE BON DE COMMANDE POUR L'EQUIPEMENT DU VEHICULE CONCERNE.
POUR DETAILS VOYEZ PLAN NO. : 1260800.

KEINE ZEICHNUNGSMASSE AUFMESSEN.
AENDERUNGEN OHNE VORANKUENDIGUNG VORBEHALTEN.
DIE AUSFUEHRUNG DES BETREFFENDEN FARHZEUGS ENTNEHME MAN DER AUFTRAGSBESTAETIGUNG.
FUER EINZELHEITEN SIEHE ZEICHNUNG : 1260800.

| SL-kabine toegevoegd voor AE=920.(Inq.N0263) | 961111 | JWH | 10663 | 05 |
|---|------------------------|---------------------|------------------------|--|
| Onderrijbalk toegevoegd(detail:R).(Inq. 2962) Verk.achterveer maat Z 278-(0,53x F) was 246-(0,54x F).(V.O.W.10961) Stabilisator ophanging vooras gew.jzigd.(V.O.W.11240) Plooi t.b.v. vervulling achterwand D-kab. foeg.(V.O.W.11297+11396) Tussenlagers Allison versn.bak.(detail:D) gew.(V.O.W.11299+11322) Positie spiegels gew.jzigd.(V.O.W.11304) Positie ver.uitlaat(detail:G) gew.(F75 V.O.W.11772+F85 Pr.10077) J-kap + onderinkapseling toegevoegd.(Pr.10675+10077) 1347 Achteras n.v.t. bij Verkorte achterveer.(CH-Layout) | 951031 | RBO | 106673 | 04 |
| Ventileneunit + 20L.ketel gew.(Inq.N0037 centr.smering) Uitlaatmond links foeg.(Inq.N0058)bochstuk foeg.(V.O.W.11197) Brstf. 300L. was 200L.(Inq.N0015) Oph.A-as paraboolveer maat Z was 253-196(115kN),253-193(120kN) + maat Z _(y.o.y.) was 101(1132),111(1339),112(1347), 95(1354).(V.O.W.10960) Oph.A-as verkorte veer maat Z was 235-184(115kN),235-181(120kN) + maat Z _(y.o.y.) was 101(1132),111(1339),112(1347), 95(1354).(V.O.W.10961) Achterasbelasting 105kN vervallen.(MUI/del D0072) | 940525 | RBO | 10663 | 03 |
| Voertuigerie F85 bijgekomen.(Inq.2969) Getekende situatie F85 was F75. Dwarsligger achter achteras gew.jzigd. (Detail:C - VGBnr.232705) | 931125 | RBO | 10740 | 02 |
| Maat 4350"D" was per vergissing 4450"D". | 930713 | RBO | 600001 | 01 |
| modification description | date | drawn by | auth. by | mod.no. |
| general tolerances | tolerance principle | title | | |
| for drawing interpretation, see DAF standard material | | FAG 75/85 | | |
| surfaces/corners | heat/surface treatment | size | scale | sheet |
| | | SP | 1:30 | 1 of 1 |
| authorised by | date | paint specification | third angle projection | This drawing is the property of DAF-Trucks N.V. Eindhoven, The Netherlands and may not be copied in whole or in part without the prior written consent of the owner. |
| drawn by | date | prod.grp spec. | spec. indicat. | drawing/issue number |
| R.Bosmans | 930111 | | | 1260694 /05 |
| source | replacement for | replaced by | CAD Unigraphics II | |