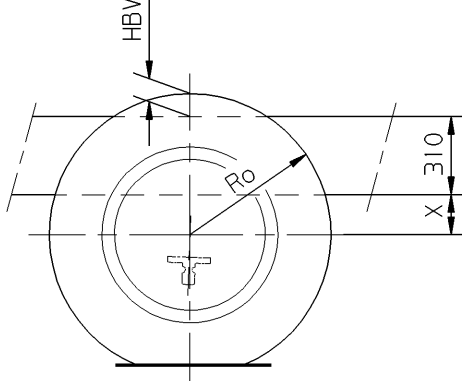
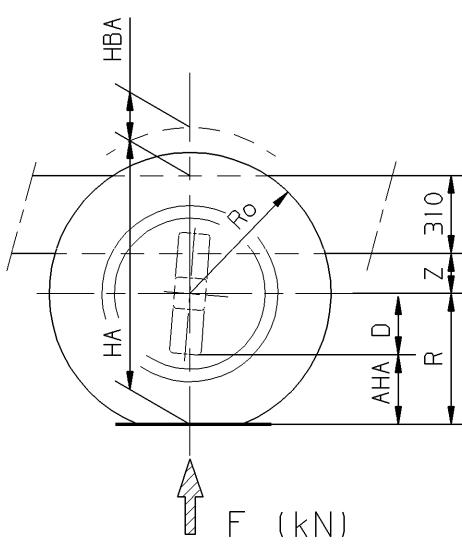


HV=R+Y+310  
AHV<sub>(min.)</sub>=R-C



HBV<sub>(max.)</sub>=Ro-310-X<sub>(y.o.y.)</sub>



HA=R+Z+310  
HBA<sub>(max.)</sub>=Ro-310-Z<sub>(y.o.y.)</sub>  
AHA<sub>(min.)</sub>=R+D

Oph. vooras 1 Suspens. front axle 1 Suspens. essieu avant 1 Aufhaeng. Vorderachse 1	Voorasbelasting Front axle load Charge' essieu avant Achslast vorn	F (kN)	Y (mm)	Vooras 1 Front axle 1 Essieu avant 1 Vorderachse 1	C (mm)
Paraboolveer Parabolic spring Ressort parabolique Parabelfeder	75 kN	42	224	152N	200
		42 t/m 75	294 -(1,67 x F)		
		75	169		

Oph. vooras 2 Suspens. front axle 2 Suspens. essieu avant 2 Aufhaeng. Vorderachse 2	Vooras 2 Front axle 2 Essieu avant 2 Vorderachse 2	X <sub>(y.o.y.)</sub> (mm)
Luchtvering Air suspension Suspension pneumatique Lufffederung	74kN/75kN	124

Oph. achteras Suspens. driver axle Suspens. essieu arriere Aufhaeng. Hinterachse	(Vooras 2) (Front axle 2) (Essieu avant 2) (Vorderachse 2)	Achterasbelasting Rear axle load Charge' essieu arriere Hinterachse	F (kN)	Rijstand Driving position Position de route Fahrstellung	Z (mm)	Lage stand Low position Position basse Niedrige Stellung	Z (mm)	Hoge positie High position Position haute Hochstand	Z (mm)	Achteras Rear axle Essieu arriere Hinterachse	D (mm)	Z <sub>(y.o.y.)</sub> (mm)
Luchtvering Air suspension Suspension pneumatique Lufffederung	115 kN (75 kN)	21	115	212	140	120	345	1132	250	1339	261	120
Luchtvering Air suspension Suspension pneumatique Lufffederung	120 kN (74 kN)	21	120	212	140	120	345	1339	261	1354	245	120

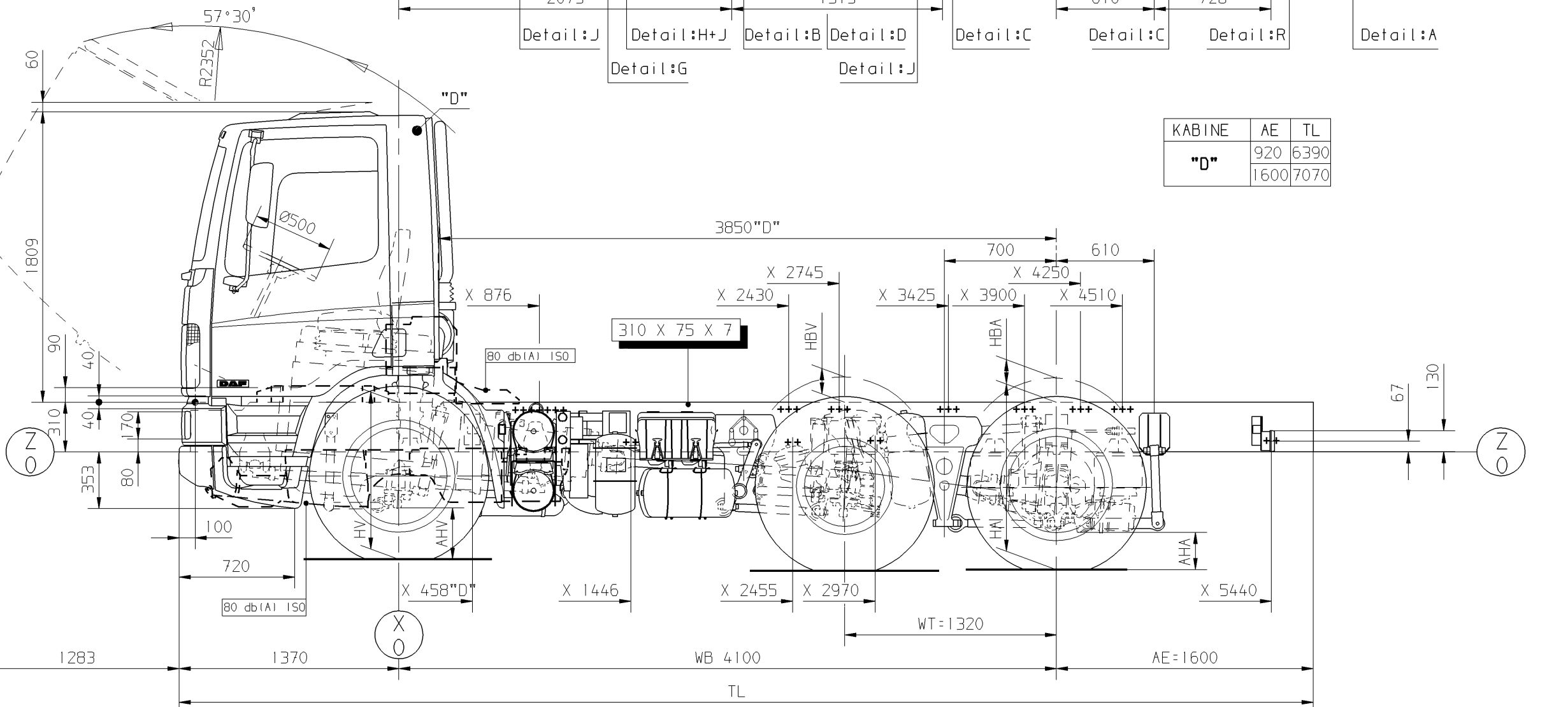
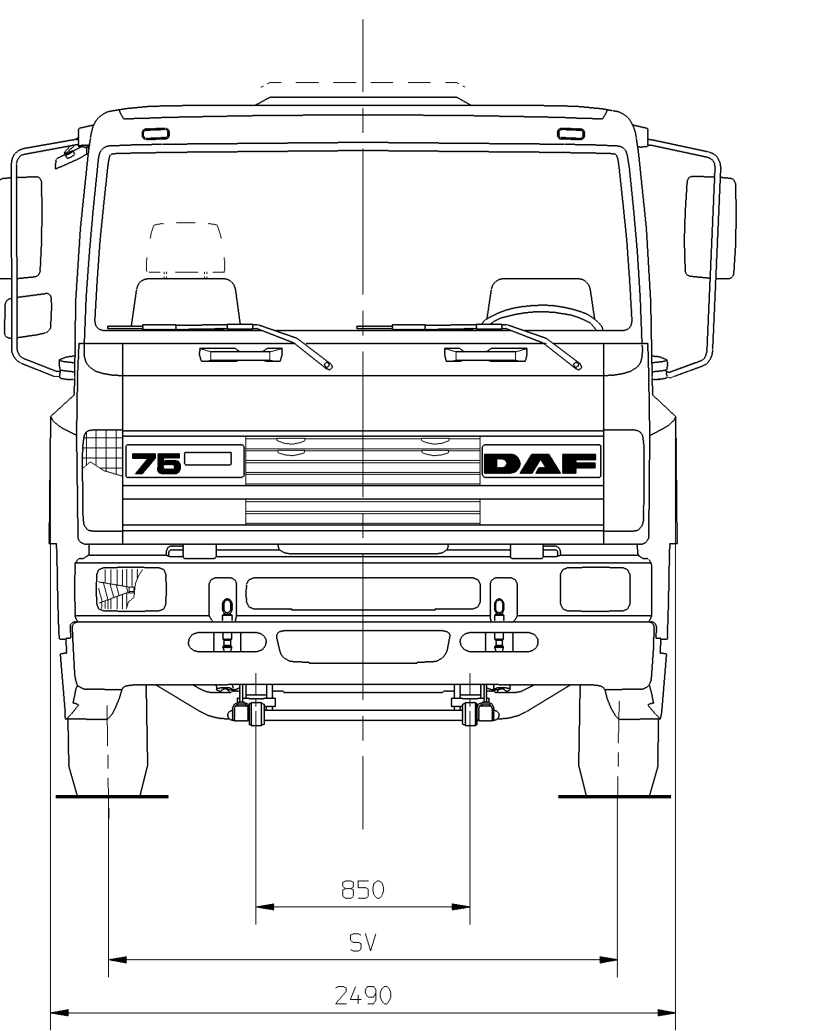
Voor Belaste(R)- en Onbelaste(Ro) bandenstralen en SV-SB-TB-BV-BB maten zie speciale tekening: 1260799.

For rolling radius Laden(R) and Unladen(Ro) and SV-SB-TB-BV-BB dimensions see special drawing: 1260799.

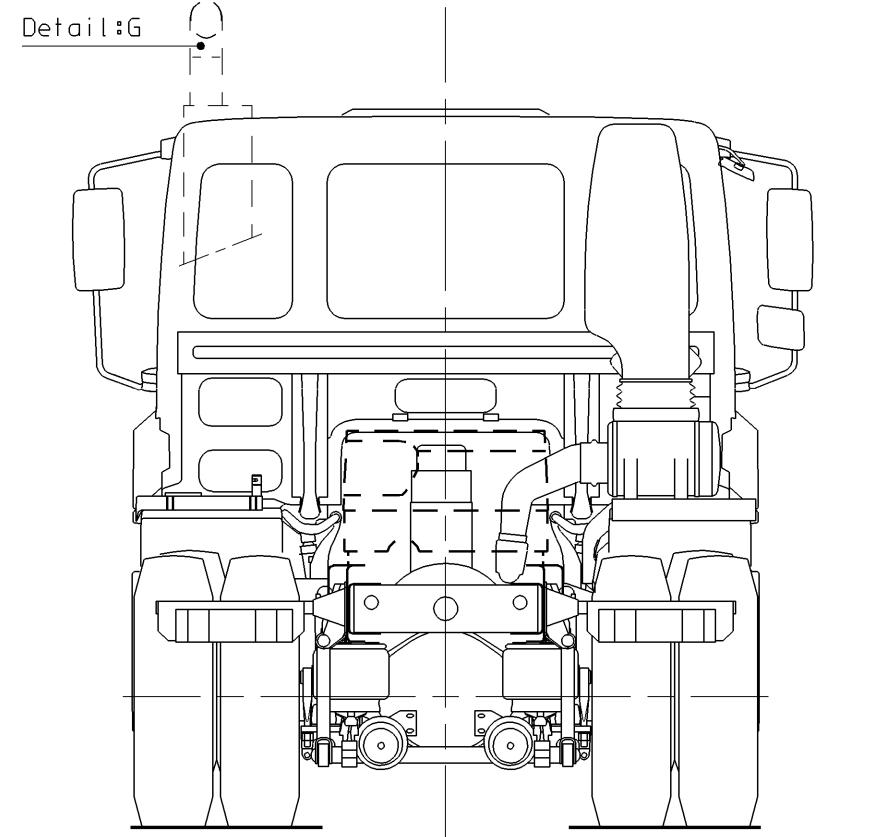
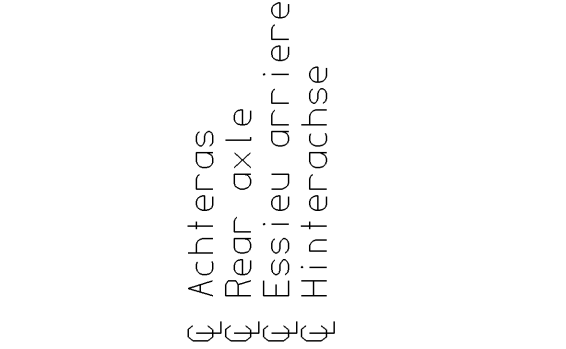
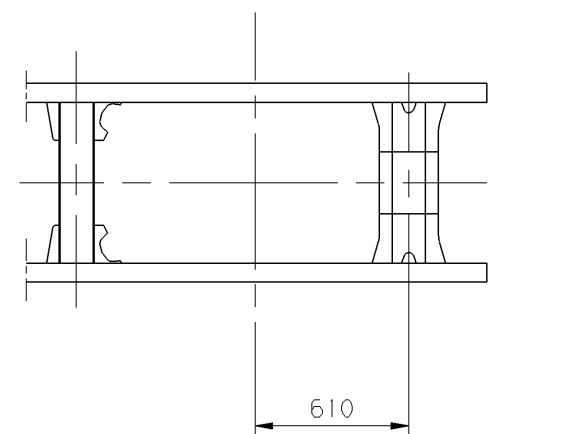
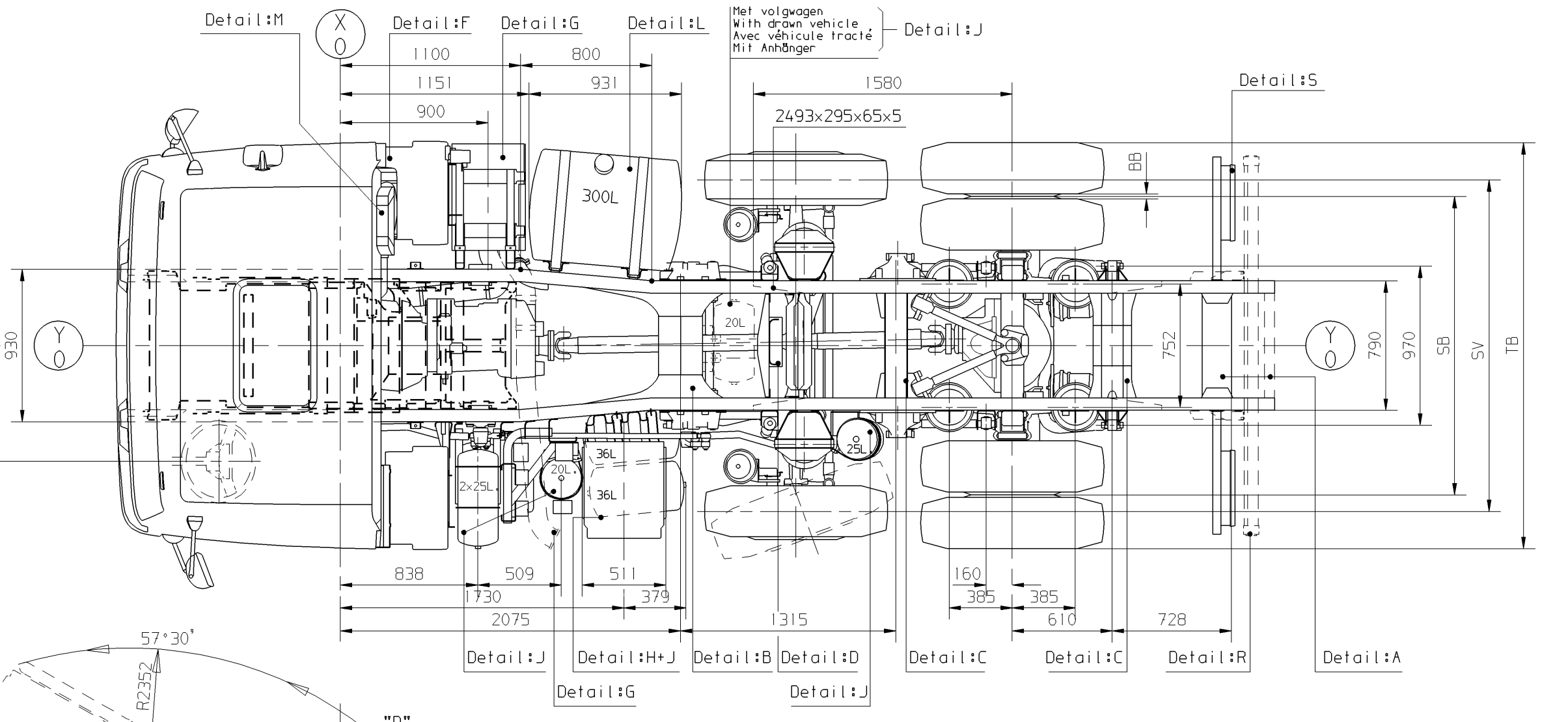
Pour les rayons des pneumatiques en Chargé(R) et a Vide(Ro) et SV-SB-TB-BV-BB dimensions voir plan no: 1260799.

Für belastete(R) und unbelastete(Ro) Reifenhalmesser und SV-SB-TB-BV-BB Masse siehe Zeichnung: 1260799.

(y.o.y.)  
Verticale inverting ijzer op ijzer  
Spring bottoming metal on metal  
Deflexion verticale métal contre métal  
Senkrechte Einfederung bis Anschlag  
Metall auf Metall



KABINE	AE	TL
"D"	920/6390	1600/7070



GEEN MATEN VAN TEKENING OPMETEN.  
WIJZIGINGEN ZONDER VOORAFGAANDE KENNISGEVING VOORBEHOUDEN.  
VOOR UITVOERING VAN HET VOERTUIG RAADPLEGE MEN DE ORDERBEVESTIGING.  
VOOR DETAILS ZIE SPECIALE TEKENING : 1260800.

DO NOT SCALE DRAWING.  
SUBJECT TO MODIFICATION WITHOUT PRIOR NOTICE.  
PLEASE SEE NOTE FOR DEFINITE VEHICLE EXECUTION.  
FOR DETAILS SEE SPECIAL DRAWING : 1260800 .

NE RIEN RELEVÉR DU DESSIN.  
SOUS RESERVE DE MODIFICATIONS SANS AVIS PREALABLE.  
VEUILLEZ CONSULTER LE BON DE COMMANDE POUR L'EQUIPEMENT DU VEHICULE CONCERNE.  
POUR DETAILS VOYEZ PLAN NO. : 1260800.

KEINE ZEICHNUNGSMASSE AUFMESSEN.  
ÄNDERUNGEN OHNE VORANKÜNDIGUNG VORBEHALTEN.  
DIE AUSFUEHRUNG DES BETREFFENDEN FARBZEUGS ENTNEHME MAN DER AUFTRAGSBEAESTATIGUNG.  
FUER EINZELHEITEN SIEHE ZEICHNUNG : 1260800.

Onderrijbalk toegevoegd(detail:R), (Inq. 2962)	951031	RBO	10663	04
Stabilisator ophanging vooras gewijzigd. (V.O.W.11240)				
Plaat t.b.v. verving achterwand kab. toeg. (V.O.W.11297+11396)				
Tussenslagers Allison versn.bak. (detail:D) gew. (V.O.W.11299+11322)				
Positie spiegels gewijzigd. (V.O.W.11304)				
Positie verfluitlaai (detail:G) gew. (V.O.W.11772)				
J-kap + onderinkapseling toegevoegd. (Pr. 10675)				
Voertuighoogtes achterasophanging gew. (CH-Wieloph./lijst 95-06-06)				
-Maat Z Rijstand 212 was 214.				
-Maat Z Lage stand 140-120 waren resp. 145-124.				
-Maat Z (y.o.y.) 120 was 124.				
Ventieleneunit + 20L ketel gew. (Inq. N0037 centr. smering)	940525	RBO	10663	03
Uitlaatmond links toeg. (Inq. N0058) + bochtstuk toeg. (V.O.W.11197)				
Brst 300L was 200L + 2x25L ketels verplaatst. (Inq. N0015)				
Achterasbelasting 105kN vervallen. (Hui/del D0072)				
AE 920 bi'jgekomen. (proj. 10058)	931125	RBO	10058	02
"Maat 3850"D" was per vergissing 3950"D".	930713	RBO	600001	01

modification description	date	drawn by	auth. by	mod.no.	issue
general tolerances					
tolerance principle					
title	FAG 75 WB 410 BLADVEER V + LUCHTVEER A. LHD				
material					
heat/surface treatment					
size	SP	scale	1:30	sheet	1 of 1
model number					
third angle projection	This drawing is the property of DAF-Trucks N.V., Eindhoven, The Netherlands and may not be copied in whole or in part without the prior written consent of the owner.				
authorised by	date	prod.grp spec. spec. indicat.	drawing/issue number		
R.Bosmans	930111		1260693/04		
replaced by	CAD Ultragraphics II				