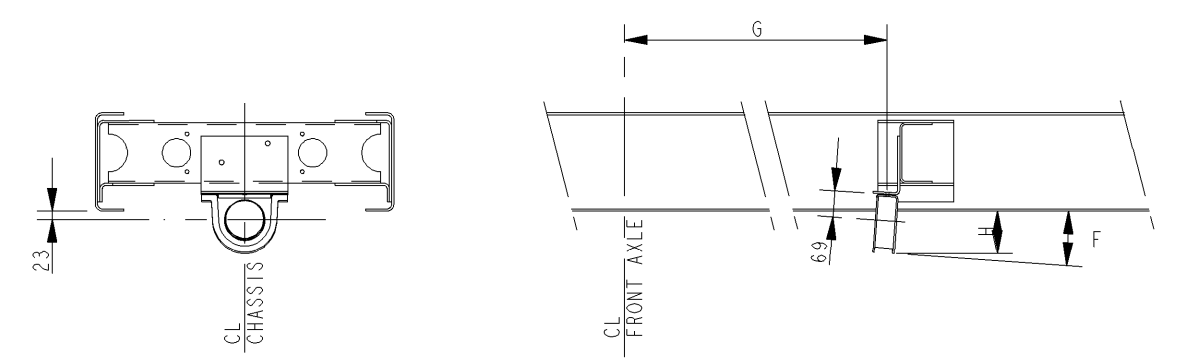


L.H.D. VEHICLE
HIGH LEVEL AIR INTAKE - DAY CAB ONLY

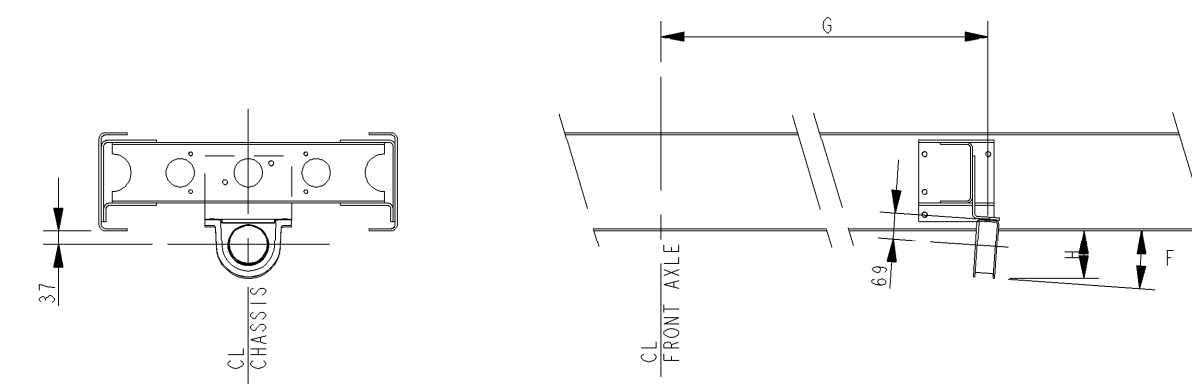
L.H.D. VEHICLE
HIGH LEVEL AIR INTAKE - SLEEPER CAB ONLY

DETAIL 'E' PROP SHAFT CENTRE BEARING POSITIONS

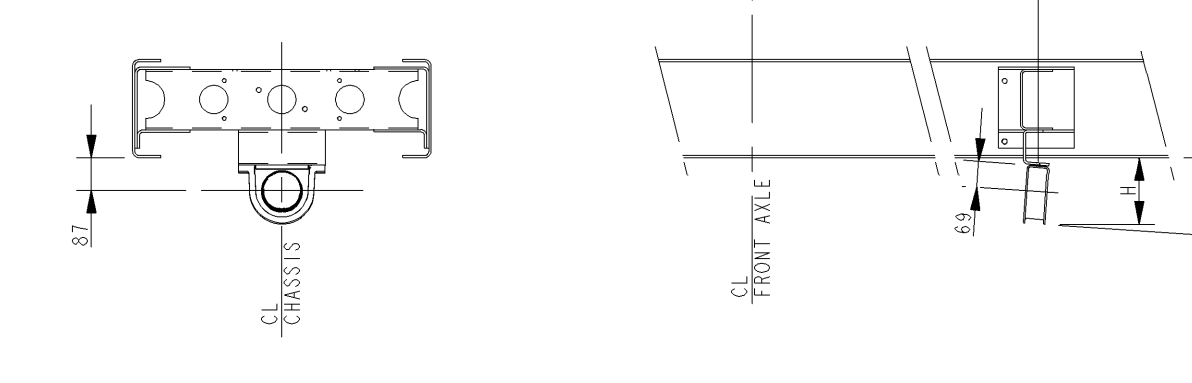
BRACKET TYPE 1



BRACKET TYPE 2



BRACKET TYPE 3



4 CYLINDER ENGINE					
WB	BEARING POSITION	BRACKET TYPE	ANGLE 'F'	DIM 'G'	DIM 'H'
3250	-	-	-	-	-
3500	1st BRG	1	5°	1720	102
3800	1st BRG	2	4°	2038	125
4200	1st BRG	2	4°	2038	125
4500	1st BRG	3	4°	2645	175
4800	1st BRG	3	4°	2645	175
5350	1st BRG	2	3°	2038	91
	2nd BRG	3	5°	3210	180
5900	1st BRG	1	2°	2648	101
	2nd BRG	3	5°	3760	180
6300	1st BRG	1	2°	2648	101
	2nd BRG	3	5°	4160	179

6 CYLINDER ENGINE - ZF TRANSMISSION					
WB	BEARING POSITION	BRACKET TYPE	ANGLE 'F'	DIM 'G'	DIM 'H'
3250	-	-	-	-	-
3500	-	-	-	-	-
3800	1st BRG	2	4°	2038	125
4200	1st BRG	2	4°	2038	125
4500	1st BRG	3	4°	2645	175
4800	1st BRG	3	4°	2645	175
5350	1st BRG	2	3°	2038	91
	2nd BRG	3	5°	3210	180
5900	1st BRG	1	2°	2648	101
	2nd BRG	3	5°	3760	180
6300	1st BRG	1	2°	2648	101
	2nd BRG	3	5°	4160	179

6 CYLINDER ENGINE EATON TRANSMISSION					
WB	BEARING POSITION	BRACKET TYPE	ANGLE 'F'	DIM 'G'	DIM 'H'
3250	-	-	-	-	-
3500	-	-	-	-	-
3800	1st BRG	2	4°	2038	128
4200	1st BRG	2	4°	2038	128
4500	1st BRG	3	4°	2645	178
4800	1st BRG	3	4°	2646	178
5350	1st BRG	2	3°	2038	103
	2nd BRG	3	5°	3210	182
5900	1st BRG	1	2°	2648	104
	2nd BRG	3	5°	3760	183
6300	1st BRG	1	2°	2648	104
	2nd BRG	3	5°	4160	183

NOTES:

DETAIL E THIS SHEET
FOR HTM PUMP & BRACKET POSITION SEE DETAIL 'F' SHEET 1 AND SHEET 2
GEEN MATEN VAN TEKENING OPMETEN. WIJZIGINGEN ZONDER VOORAFGAANDE KENNISGEVING VOORBEHOUDEN. VOOR UITVOERING VAN HET VOERTUIG RAADPLEGE MEN DE ORDERBEVESTIGING. VOOR AFMETINGEN VAN DE LANGSLIGGERS ZIE DETAIL C.
DO NOT SCALE DRAWING. SUBJECT TO MODIFICATION WITHOUT PRIOR NOTICE. PLEASE SEE NOTE FOR DEFINITIVE VEHICLE LAY-OUT FOR THE SECTIONAL DIMENSIONS OF THE MAIN GIRDERS, SEE DETAIL C.
NE RIEN RELEVER DU DESSIN. SOUS RESERVE DE MODIFICATIONS SANS AVIS PREALABLE. VEUILLEZ CONSULTER LE BON DE COMMANDE POUR LE EQUIPEMENT DU VEHICULE CONCERNE EN CE QUI CONCERNE LA SECTION DES LONGERONS VOIR DETAIL C.
KEINE ZEICHNUNGSMASSE AUFMESSEN. ANDERUNGEN OHNE VORANKUNDIGUNG VORBEHALTEN. DIE AUSFUHRUNG DES BETREFFENDEN FAHRZEUGS ENTNEHME MAN DER AUFTRAGSBESTATIGUNG FUR DIE SCHNITTMASSE DER LANGSTRAGER SIEHE DETAIL C.

modification description		date	drawn by	auth by	mod.no.	issue
general tolerances	tolerance principle	<p style="text-align: center;">DETAILS - E & F FA LF 55 Euro 4/5 12-15T</p>				
for drawing interpretation, see DAF standard.	material					
surfaces/corners	heat/surface treatment	size	scale	sheet	model number	
authorised by	date	paint specification	<p style="text-align: center;">third angle projection</p>			
KJ WILLIAMS			<p style="text-align: center;">This drawing is the property of DAF - Trucks N.V. Eindhoven, The Netherlands and may not be copied in whole or in part without the prior written consent of the owner.</p>			
drawn by	date	prod.gp.spec.	spec. indicat.	drawing/issue number		
MK JOSHI	28/07/06			<p style="text-align: center;">DAF NSEA322/A</p>		
source	replacement for	replaced by		CAD Pro/ENGINEER		