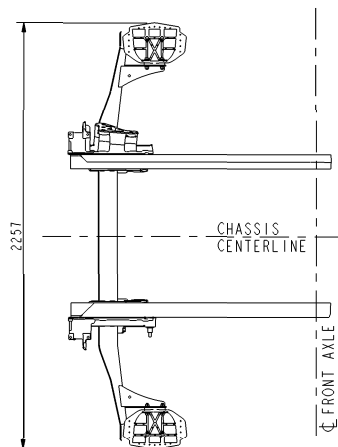
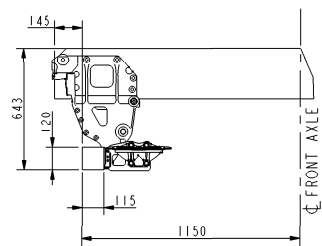
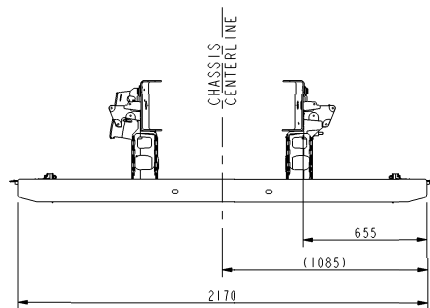
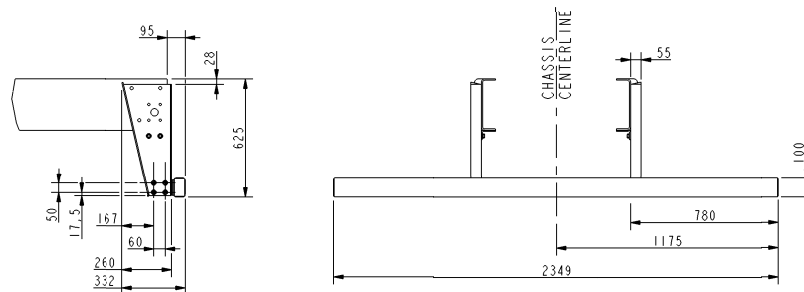


DETAILS 'R'

FRONT UNDER RUN BAR



REAR UNDER RUN BAR



GEEN MATEN VAN TEKENING OPMETEN.  
WIJZIGINGEN ZONDER VOORAFGAANDE KENNISGEVING VOORBEHOUDEN.  
VOOR UITVOERING VAN HET VOERTUIG RAADPLEGE MEN DE ORDERBEVESTIGING.

DO NOT SCALE DRAWING.  
SUBJECT TO MODIFICATION WITHOUT PRIOR NOTICE.  
PLEASE SEE NOTE FOR DEFINITE VEHICLE EXECUTION.

NE RIEN RELEVER DU DESSIN.  
SOUS RESERVE DE MODIFICATIONS SANS AVIS PREALABLE.  
VEUILLEZ CONSULTER LE BON DE COMMANDE POUR L'EQUIPEMENT DU VEHICULE CONCERNE.

KEINE ZEICHNUNGSMASSE AUFMESSEN.  
ÄNDERUNGEN OHNE VORANKÜNDIGUNG VORBEHALTEN.  
DIE AUSFÜHRUNG DES BETREFFENDEN FÄHRZEUGS ENTNEHME MAN DER AUFTRAGSBESTÄTIGUNG.

modification description		date		drawn by	auth by	mod.no.	issue
general tolerances		tolerance principle		title			
for drawing interpretation, see DAF standard:		material		<b>DETAIL - R</b> <b>FA LF EURO 5 (NON EU) 18-19T</b>			
surfaces/corners		heat/surface treatment					
authorized by	date	panel specification		size	scale	sheet	model number
K. WILLIAMS	051114			<b>SP</b>	1:30	1 of 1	
drawn by	date	prod. grp. spec.	spec. radical.	third angle projection		This drawing is the property of DAF - Trucks N.V. Eindhoven, The Netherlands and may not be copied in whole or in part without the prior written consent of the owner.	
C. ROBINSON	051114						
source	replacement for	drawing/issue number		<b>NSEA881/00</b>			
		replaced by		CAD Pro/ENGINEER			