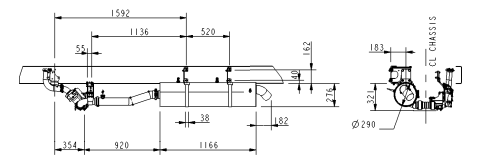
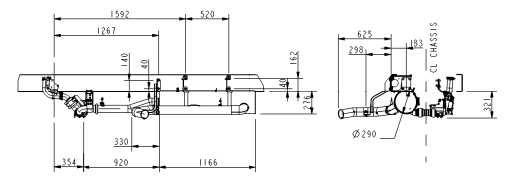


DETAIL 'G' EGP SYSTEMS

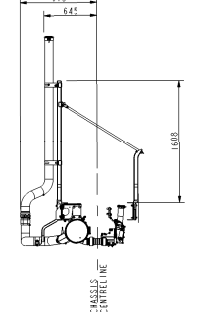
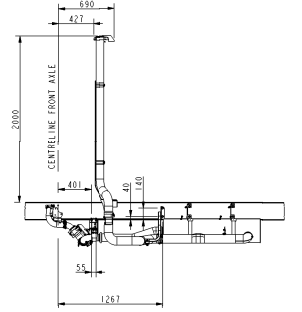


6 CYL ENGINE - CENTRE DISCHARGE



6 CYL ENGINE - FORWARD LH DISCHARGE

DETAILS ON VERTICAL EGP



VERTICAL DISCHARGE

GEEN MATEN VAN TEKENING OPMETEN.
WIJZIGINGEN ZONDER VOORAFGAANDE KENNISGEVING VOORBEHOUDEN.
VOOR UITVOERING VAN HET VOERTUIG RAADPLEEG MEN DE ORDERBEVESTIGING.

DO NOT SCALE DRAWING.
SUBJECT TO MODIFICATION WITHOUT PRIOR NOTICE.
PLEASE SEE NOTE FOR DEFINITE VEHICLE EXECUTION.

NE RIEN RELEVER DU DESSIN.
SOUS RESERVE DE MODIFICATIONS SANS AVIS PREALABLE.
VEUILLEZ CONSULTER LE BON DE COMMANDE POUR L'EQUIPEMENT DU VEHICULE CONCERNE.

KEINE ZEICHNUNGSMASSE AUFMESSEN.
ÄNDERUNGEN OHNE VORANKÜNDIGUNG VORBEHALTEN.
DIE AUSFÜHRUNG DES BETREFFENDEN FARBZEUGS ENTNEHME MAN DER AUFTRAGSBESTÄTIGUNG.

modification description	reference principle	title	date	drawn by	auth by	mod no.	issue
general tolerances	material	DETAIL G FA LF EURO 5 (NON EU) 7.5-12T					
for drawing interpretation, see DAF standard:	surface/finish		size	scale	sheet	model number	
surfaces/finishes	third angle projection	SP	1:30	1	of 1		
authorized by	date	paint specification	This drawing is the property of DAF - Tractors N.V. Eindhoven, The Netherlands, and may not be copied in whole or in part without the prior written consent of the owner.				
R. WILLIAMS	051114		drawn by	date	proj. spec.	spec. indic.	drawing/issue number
C. ROBINSON	051114		DAF				NSEA857/00
source	replacement for	replaced by	CAD Pro/ENGINEER				