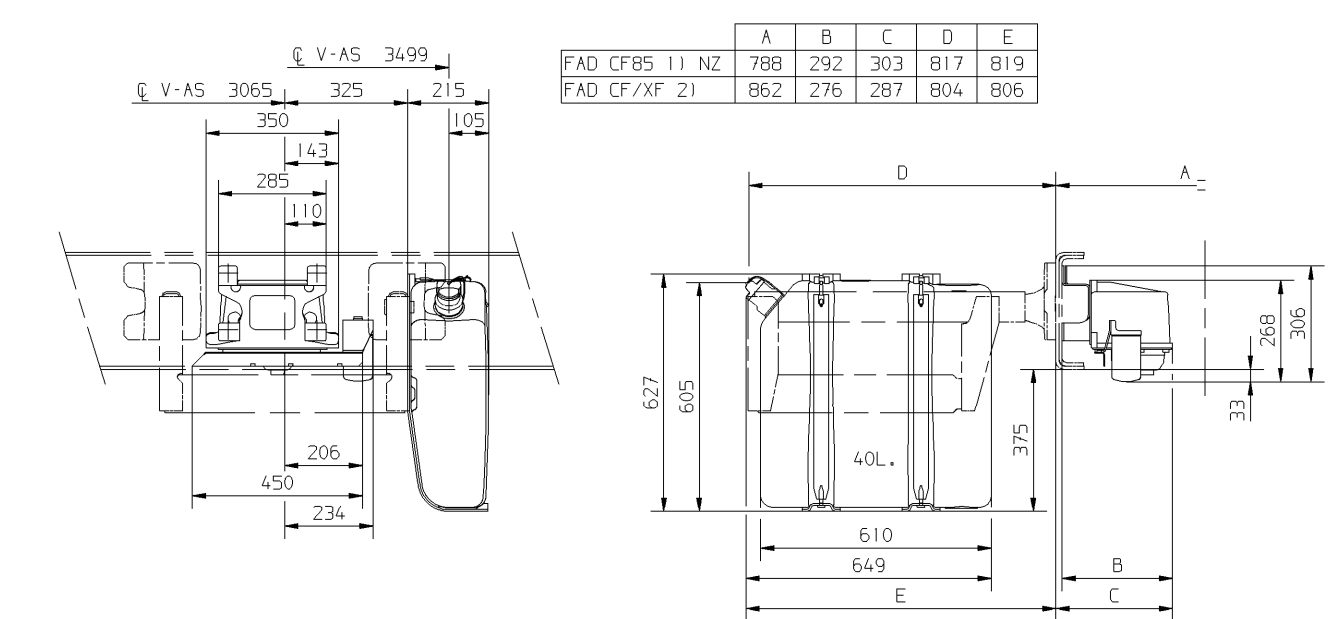
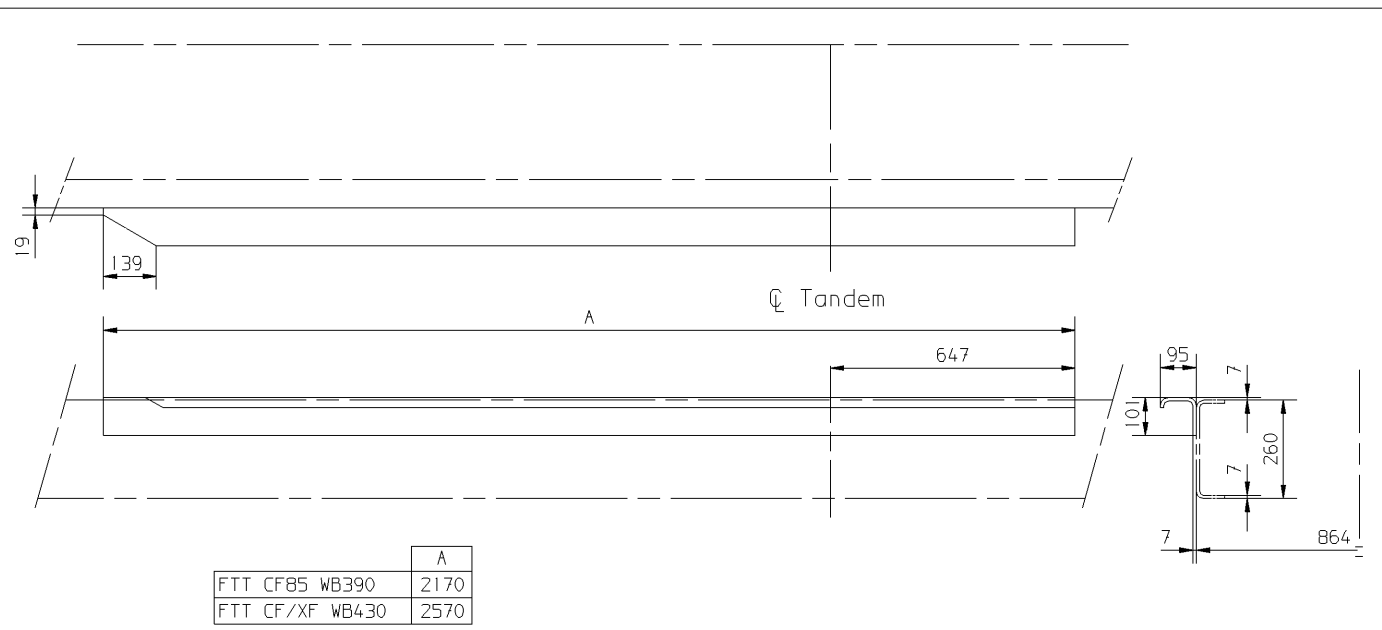


DETAIL: P FT C75



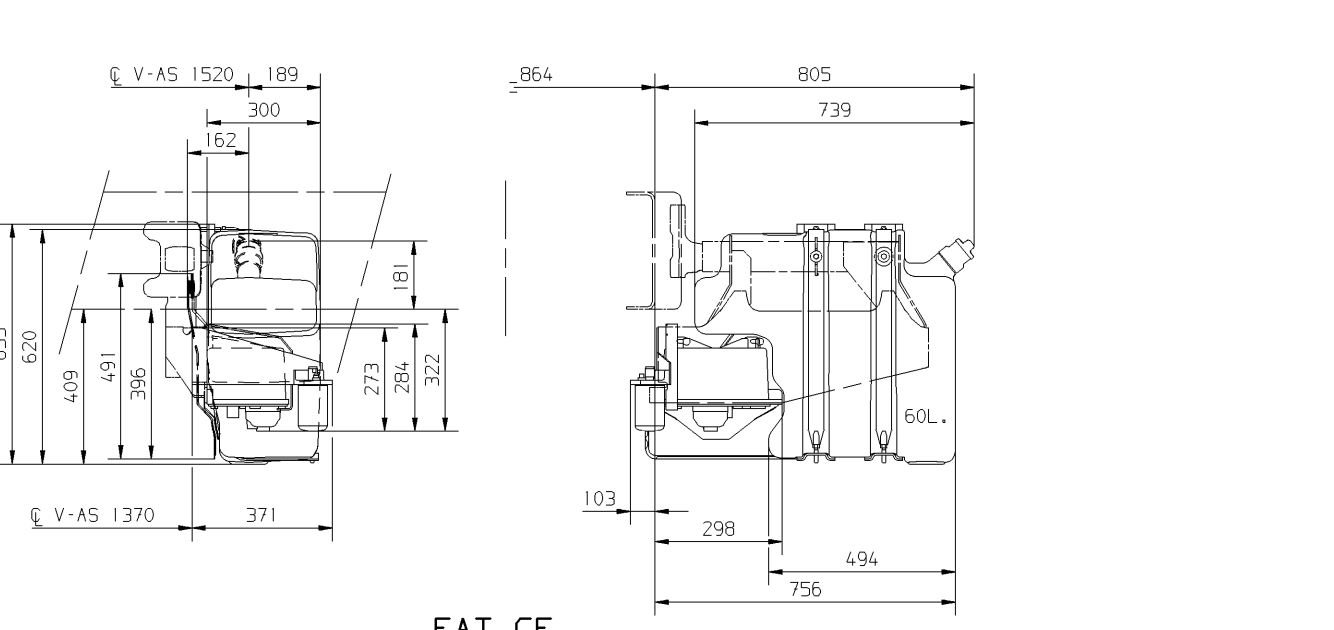
FAD CF/XF

A	B	C	D	E	
FAD CF85 11 NZ	788	292	303	817	819
FAD CF/XF 21	862	276	287	804	806

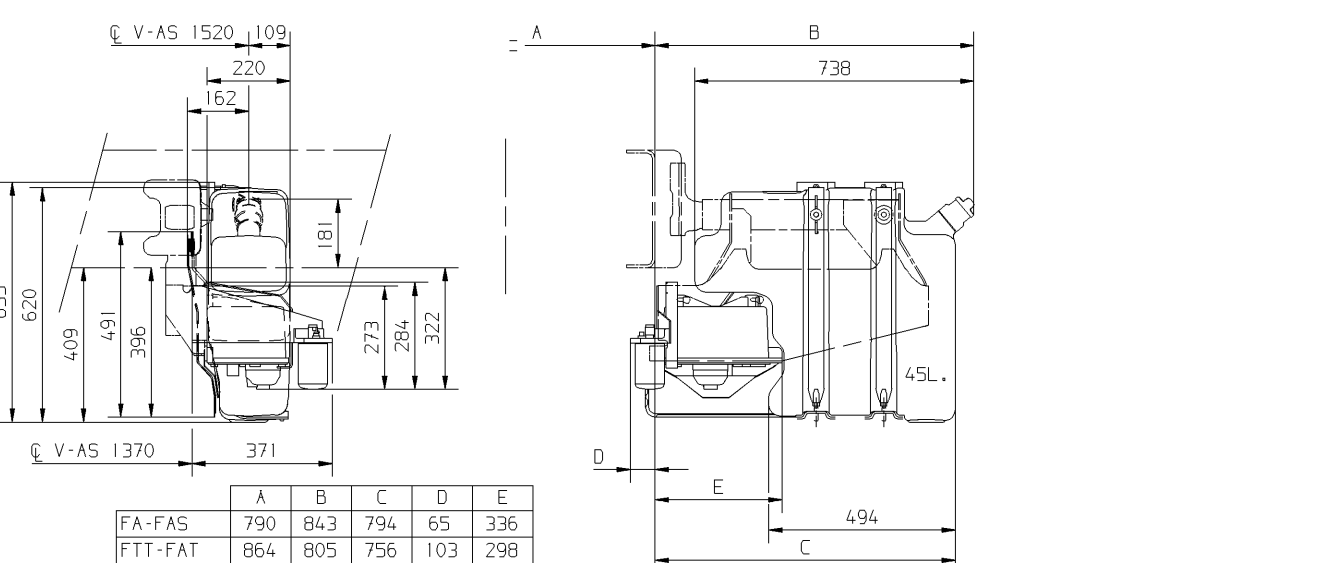


FTT CF/XF

A	
FTT CF85 WB390	2170
FTT CF/XF WB430	2570

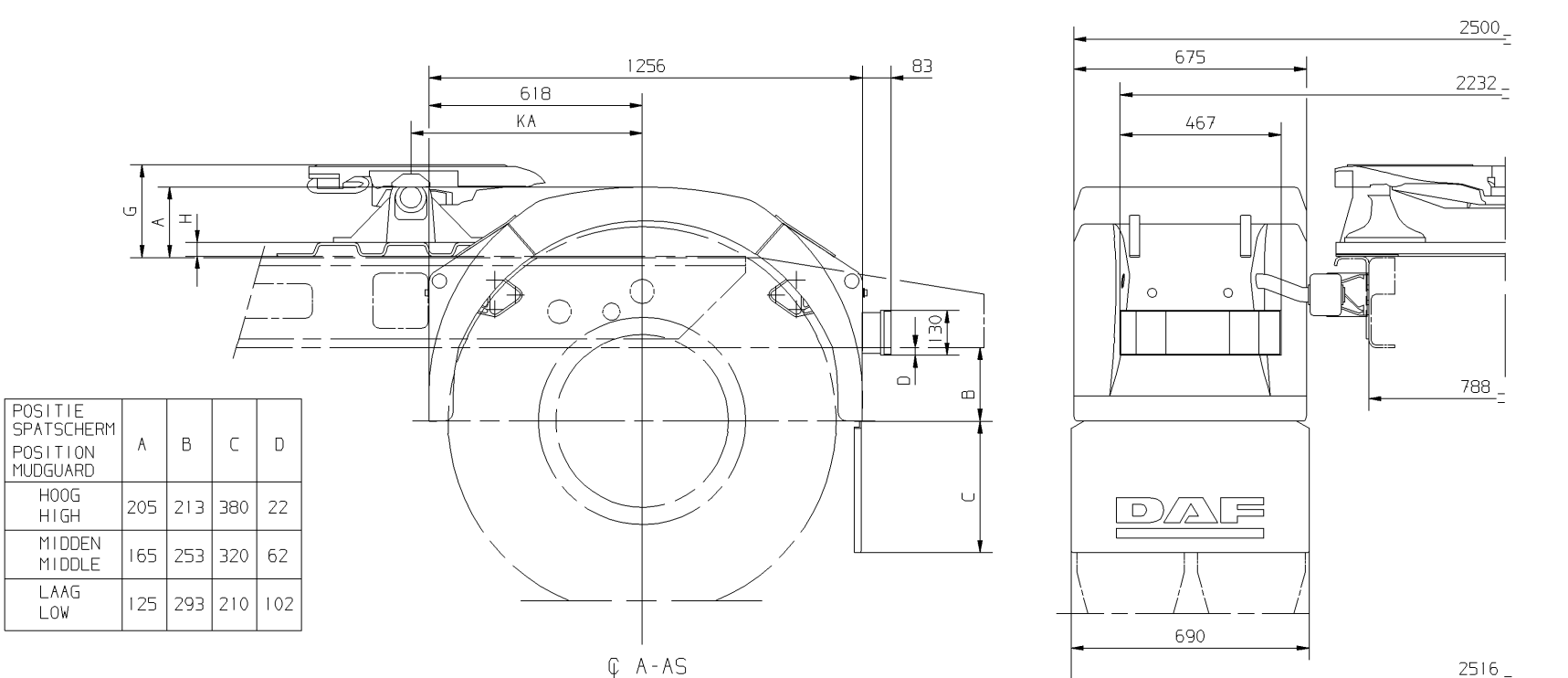


FAT CF



DETAIL: P FA CF75-FAS CF75-FTT CF/XF-FAT CF

A	B	C	D	E	
FA-FAS	790	843	794	65	336
FTT-FAT	864	805	756	103	298



DETAIL: T FT CF75 WB360 21

POSITIE SPATSCHERM POSITION HODGUARD	A	B	C	D
HOOG HIGH	205	213	380	22
MIDDEN MIDDLE	165	253	320	62
LAAG LOW	125	293	210	102

KA	H	G
480	12	164 VBG
	166	JOST + GEORG FISHER
	178	VBG
	180	JOST + GEORG FISHER
	215	JOST + GEORG FISHER + VBG
	192	VBG
40	194	JOST + GEORG FISHER
	229	JOST + GEORG FISHER + VBG
	249	JOST
	254	VBG
492,5	269	JOST
	229	JOST + Eurohitch Weight-saver

GEEN MATEN VAN TEKENING OPMETEN.  
 WIJZIGINGEN ZONDER VOORAFGAANDE KENNISGEVING VOORBEHOUDEN.  
 VOOR UITVOERING VAN HET VOERTUIG RAADPLEEG  
 MEN DE ORDERBEVESTIGING.  
 VOOR AFMETINGEN VAN DE LANGSLIGGERS ZIE DETAIL:B.

DO NOT SCALE DRAWING.  
 SUBJECT TO MODIFICATION WITHOUT PRIOR NOTICE.  
 PLEASE SEE NOTE FOR DEFINITE VEHICLE LAY-OUT.  
 FOR THE SECTIONAL DIMENSIONS OF THE MAIN GIRDERS,  
 SEE DETAIL:B.

NE RIEN RELEVER DU DESSIN.  
 SOUS RESERVE DE MODIFICATIONS SANS AVIS PREALABLE.  
 VEUILLEZ CONSULTER LE BON DE COMMANDE  
 POUR L EQUIPEMENT DU VEHICULE CONCERNE.  
 EN CE QUI CONCERNE LA SECTION DES LONGERONS VOIR DETAIL:B.

KEINE ZEICHNUNGSMASSE AUFMESSEN.  
 ANDERUNGEN OHNE VORANKUNDIGUNG VORBEHALTEN.  
 DIE AUSFUHRUNG DES BETREFFENDEN FAHRZUEGS  
 ENTNEHME MAN DER AUFTRAGSBESTATIGUNG.  
 FUR DIE SCHNITTMASSE DER LANGSTRAGER SIEHE DETAIL:B.

"D" = DAGKABINE DAY KAB CABINE COURTE NORMALFAHRERHAUS  
 "SL" = SLAAPKABINE SLEEPER KAB CABINE PROFONDE FERNFAHRERHAUS  
 "SH" = SLAAPHOOGKABINE HIGH-ROOF SLEEPER KAB CABINE PROFONDE SURELEVEE GROBRUUMFERNFAHRERHAUS

☉ V-AS = ☉-VOORAS -FRONT AXLE -ESSIEU AVANT -VORDERACHSE  
 ☉ A-AS = ☉-ACHTERAS -REAR AXLE -ESSIEU ARRIERE -HINTERACHSE  
 ☉ TANDEM = ☉-TANDEM -TANDEM -TANDEM

1) = BLADVERING - VOOR + ACHTER LEAF SUSPENSION - FRONT + REAR SUSPENSION A LAMES - AVANT + ARRIERE BLATTFEDERUNG - VORN + HINTEN  
 ☉ SLEEPAS = ☉-SLEEPAS -TRAILLING AXLE -ESSIEU FOU -NACHLAUFACHSE

2) = BLADVERING - VOOR + LUCHTVERING - ACHTER LEAF SUSPENSION - FRONT + AIR SUSPENSION - REAR SUSPENSION A LAMES - AVANT + SUSPENSION PNEUMATIQUE - ARRIERE BLATTFEDERUNG - VORN + LUFTFEDERUNG - HINTER

3) = LUCHTVERING - VOOR + ACHTER AIR SUSPENSION - FRONT + REAR SUSPENSION PNEUMATIQUE - AVANT + ARRIERE LUFTFEDERUNG - VORN + HINTEN  
 ☉-KAB = ☉-KABINE -KAB -FAHRERHAUS

DETAILS N + P + T.

modification description	date	drawn by	auth. by	mod.no.	issue
general tolerances					
for drawing interpretation, see DAF standards					
surfaces/corners	heat/surface treatment	size	scale	sheet	model number
authorised by	date	part specification	third angle projection	This drawing is the property of DAF-Trucks N.V., Eindhoven, the Netherlands and may not be copied in whole or in part without the prior written consent of the owner.	
drawn by	date	prod.grp spec. spec. indicat.		drawing/issue number	
source	replacement for	replaced by			

DETAILS N T/M T  
 CF75/85 + XF105  
 AUSTRALIE - NEW ZEALAND  
 Proj. 10686

SP 1:20 1 of 1

1743798/00

CAD Unigraphics II