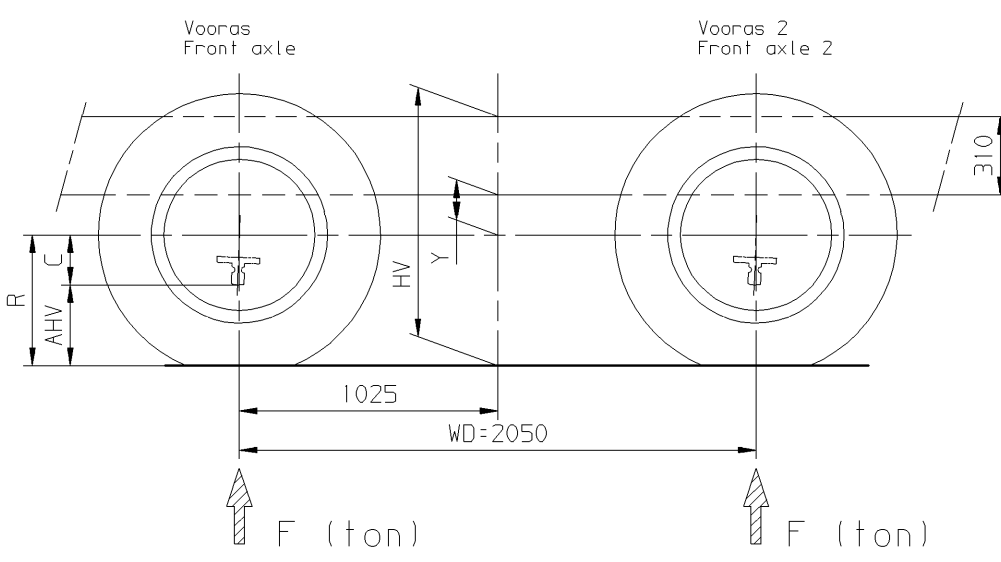
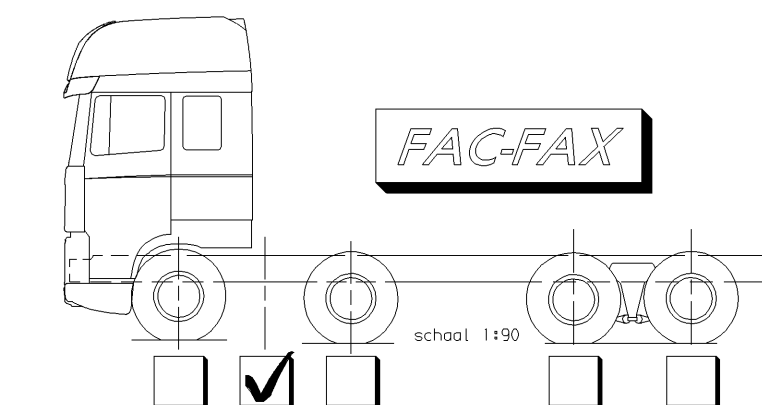


Attention:  
 F.. CF 2): Only CF75/85  
 F.. XF 2): Only XF105  
 F.. 2) : CF75/85 + XF105

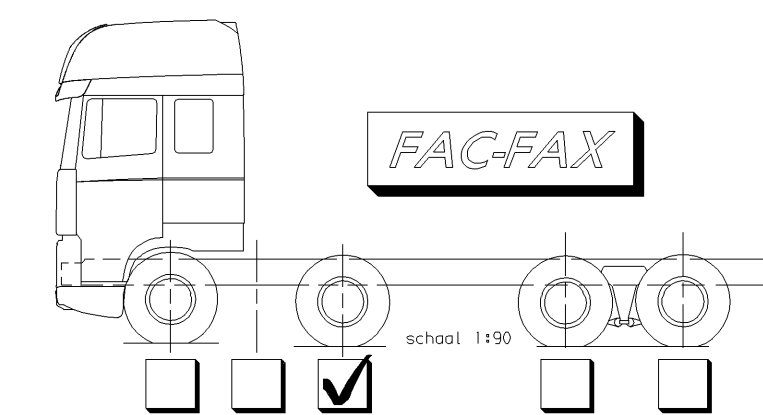


HV=R+Y+310  
 AHV<sub>(min.)</sub>=R-C

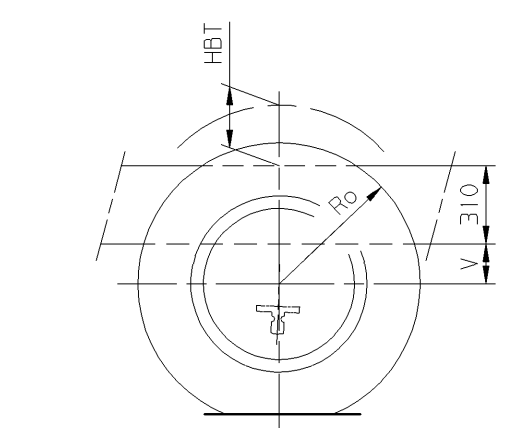


- 1) = Bladveer VООR + АСНТЕР  
Leaf suspension FRONT + REAR
- 2) = Bladveer VООR + Luchtvering АСНТЕР  
Leaf suspension FRONT + Air suspension REAR
- 3) = Luchtvering VООR + АСНТЕР  
Air suspension FRONT + REAR

Bladvering VООR / Leaf suspension FRONT			
Ophanging + Vooras Suspension + Front axle	Y (mm)	C (mm)	Voertuigtype Vehicle type
75 kN leaf + 152N	$186 + [16,24 \times (7,5 - F)]$	210	FAC CF 11/21; FAX CF 21
90 kN leaf + 182N	$186 + [13,01 \times (9 - F)]$	232	

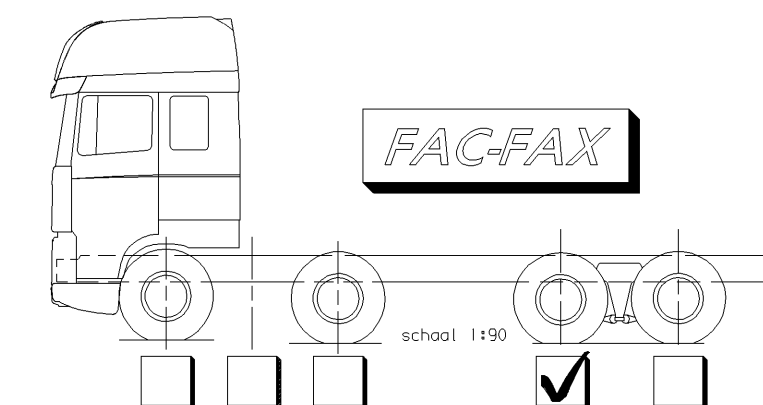


Bladvering VООRAS 2 / Leaf suspension FRONT AXLE 2		
Ophanging + Vooras 2 Suspension + Front axle 2	Vooras 2 Front axle 2 V(y,o,y.) (mm)	Voertuigtype Vehicle type
75 kN leaf + 152N	76	FAC CF 11/21; FAX CF 21
90 kN leaf + 182N	65	



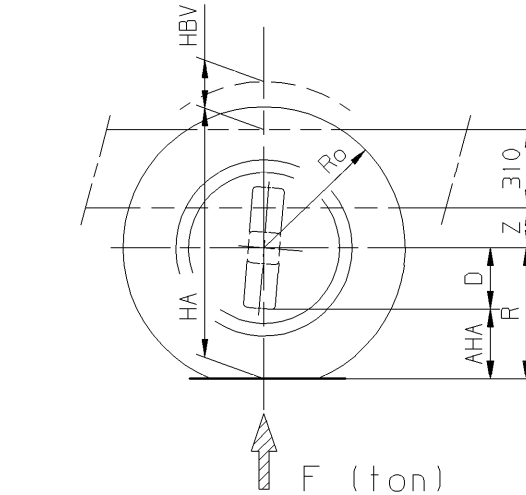
HBT<sub>(max.)</sub>=R-310-V<sub>(y,o,y.)</sub>

Attention:  
 F.. CF 2): Only CF75/85  
 F.. XF 2): Only XF105  
 F.. 2) : CF75/85 + XF105



- 1) = Bladveer VООR + АСНТЕР  
Leaf suspension FRONT + REAR
- 2) = Bladveer VООR + Luchtvering АСНТЕР  
Leaf suspension FRONT + Air suspension REAR
- 3) = Luchtvering VООR + АСНТЕР  
Air suspension FRONT + REAR

Bladvering АСНТЕР / Leaf suspension REAR					
Ophanging + Achteras Suspension + Rear axle	Tandembelasting Tandem load (ton)	Z (mm)	D (mm)	Z(y,o,y.) (mm)	Voertuigtype Vehicle type
196 kN(12+7,6) leaf +	$\begin{cases} 1347 \\ 1356 \end{cases}$	$F < 19,6 \text{ ton}$	$219 + [1,96 \times (19,6 - F)]$	$\begin{cases} 285 \\ 182 \end{cases}$	113 FAC CF 11
		$F \pm 4 \text{ ton} *$	317		



HA=R+Z+310  
 HBV<sub>(max.)</sub>=R-310-Z<sub>(y,o,y.)</sub>  
 AHA<sub>(min.)</sub>=R-D

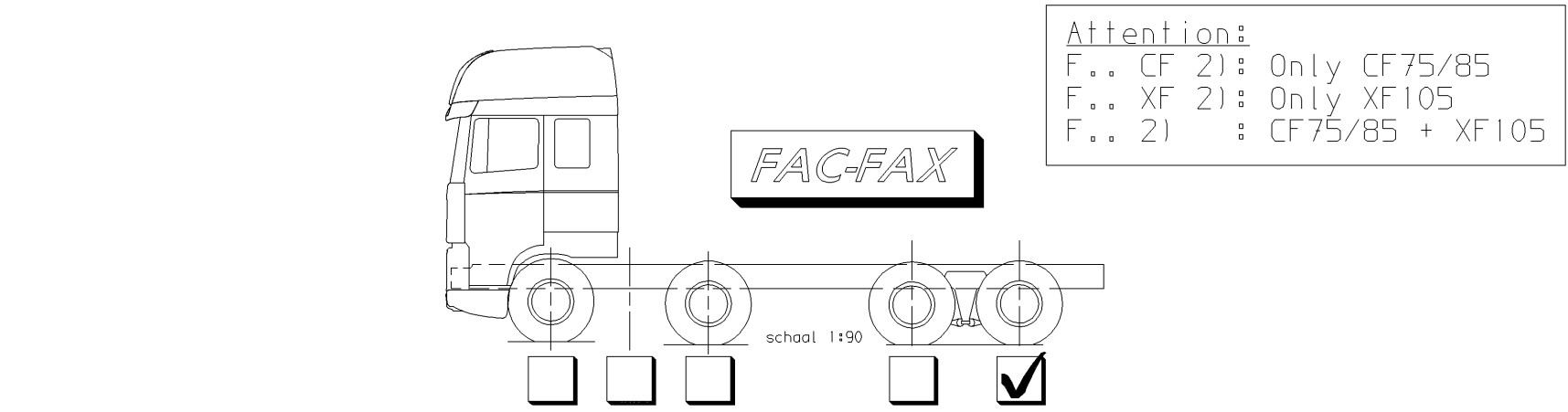
\*)  
 Sleepas op  
 Trailing axle raised

(y.o.y.)  
 As iJzer op iJzer  
 Axle metal on metal

Luchtvering АСНТЕР / Air suspension REAR						
Ophanging + Achteras Suspension + Rear axle	Rijstand Driving position Z (mm)	Lage stand Low position Z (mm)	Hoge stand High position Z (mm)	D (mm)	Z(y,o,y.) (mm)	Voertuigtype Vehicle type
198 kN(12+7,8) air	$\begin{cases} 1347 \\ 1356 \end{cases}$	212	140	263	295	120 FAC CF 21
		252 *)	---	---	---	

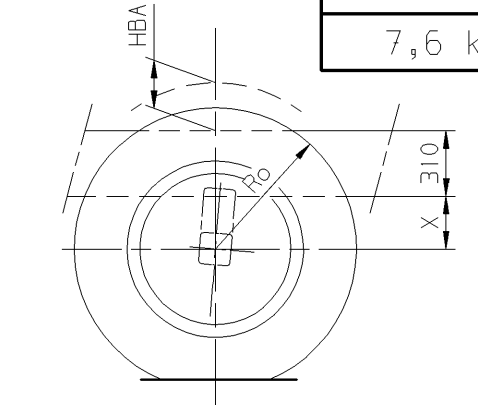
R band ≤ 462 R band ≥ 463

Luchtvering АСНТЕР / Air suspension REAR						
Ophanging + Achteras Suspension + Rear axle	Rijstand Driving position Z (mm)	Lage stand Low position Z (mm)	Hoge stand High position Z (mm)	D (mm)	Z(y,o,y.) (mm)	Voertuigtype Vehicle type
190 kN(11,5+7,5) air 194 kN(12+7,4) air	$\begin{cases} 1347 \\ 1356 \end{cases}$	212	140	266	$\begin{cases} 285 \\ 182 \end{cases}$	120 FAX CF 21
		252 *)	---	---		



Attention:  
 F.. CF 2): Only CF75/85  
 F.. XF 2): Only XF105  
 F.. 2) : CF75/85 + XF105

Bladvering SLEEPAS / Leaf suspension TRAILLING AXLE		
Ophanging sleepas + Sleepas Suspension trailer axle + Trailer axle	X(y,o,y.) (mm)	Voertuigtype Vehicle type
7,6 kN leaf + 09N220	97 135 *)	FAC CF 11



HBA<sub>(max.)</sub>=Ro-310-X<sub>(y,o,y.)</sub>

- 1) = Bladveer VООR + АСНТЕР  
Leaf suspension FRONT + REAR
- 2) = Bladveer VООR + Luchtvering АСНТЕР  
Leaf suspension FRONT + Air suspension REAR
- 3) = Luchtvering VООR + АСНТЕР  
Air suspension FRONT + REAR

Luchtvering SLEEPAS / Air suspension TRAILLING AXLE		
Ophanging sleepas + Sleepas Suspension trailer axle + Trailer axle	X(y,o,y.) (mm)	Voertuigtype Vehicle type
7,8 kN air + 09N220	124	FAC CF 21
7,5/7,4 kN air + 09G075	104	FAX CF 21

Voor belaste(R)- en onbelaste(Ro) bandenstralen en SV-SB-TB-BV-BB maten zie speciale tekening: 1260799.  
 For rolling radius laden(R) and unladen(Ro) and SV-SB-TB-BV-BB dimensions see special drawing: 1260799.  
 Pour les rayons des pneumatiques en charge(R) et à vide(Ro) et SV-SB-TB-BV-BB dimensions voir plan no: 1260799.  
 Für belastete(R) und unbelastete(Ro) Reifenhalbmesser und SV-SB-TB-BV-BB Masse siehe Zeichnung: 1260799.

GEEN MATEN VAN TEKENING OPMETEN.  
 WIJZIGINGEN ZONDER VOORAFGAANDE KENNISGEVING VOORBEHOUDEN.  
 VOOR UITVOERING VAN HET VOERTUIG RAADPLEGE MEN DE ORDERBEVESTIGING.

DO NOT SCALE DRAWING.  
 SUBJECT TO MODIFICATION WITHOUT PRIOR NOTICE.  
 PLEASE SEE NOTE FOR DEFINITE VEHICLE EXECUTION.

NE RIEN RELEVÉR DU DESSIN.  
 SOUS RÉSERVE DE MODIFICATIONS SANS AVIS PRÉALABLE.  
 VEUILLEZ CONSULTER LE BON DE COMMANDE POUR L'ÉQUIPEMENT DU VÉHICULE CONCERNÉ.

KEINE ZEICHNUNGSMASSE AUFMESSEN.  
 ÄNDERUNGEN OHNE VORANKÜNDIGUNG VORBEHALTEN.  
 DIE AUSFÜHRUNG DES BETREFFENDEN FAHRZEUGS ENTNEHME MAN DER AUFTRAGSBESTÄTIGUNG.

modification description	date	drawn by	auth. by	mod.no.	issue
general tolerances					
For drawing interpretation, see DAF standards					
surfaces/corners	heat/surface treatment	size	scale	sheet	model number
authorised by	date	point specification	third angle projection	This drawing is the property of DAF-Trucks N.V., Eindhoven, the Netherlands and may not be copied in whole or in part without the prior written consent of the owner.	
drawn by	date	prod.grp spec. spec. indicat.		drawing/issue number	
source	replacement for	replaced by	CAD Unigraphics II		

WAGENHOOGTES CF/XF  
 VEHICLE HEIGHTS CF/XF  
 FAC-FAX  
 Projekt 10680

SP 1:30  
 1 of 1  
 1668116/00