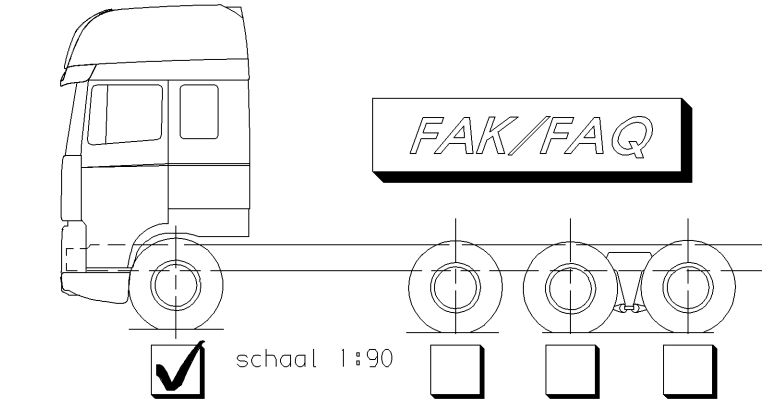
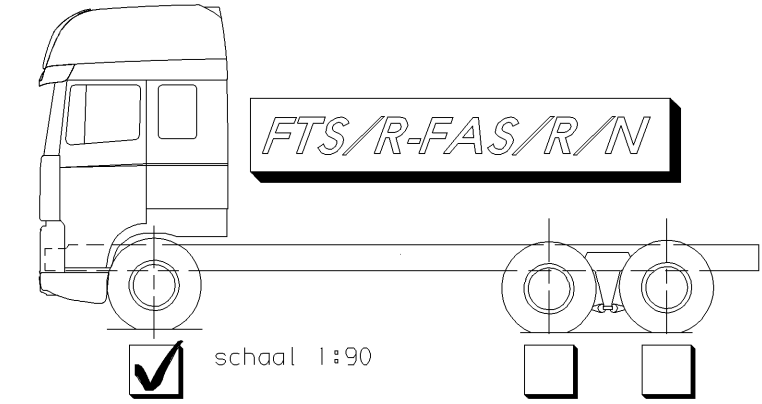


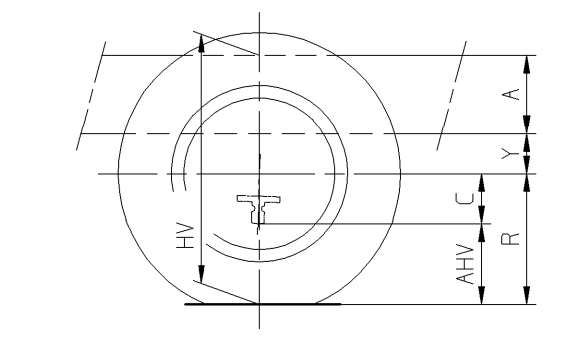
Attention:
 F.. CF 2): Only CF75/85
 F.. XF 2): Only XF105
 F.. 2) : CF75/85 + XF105

A	A
Langsliggerhoogte Height main girder	260
	310

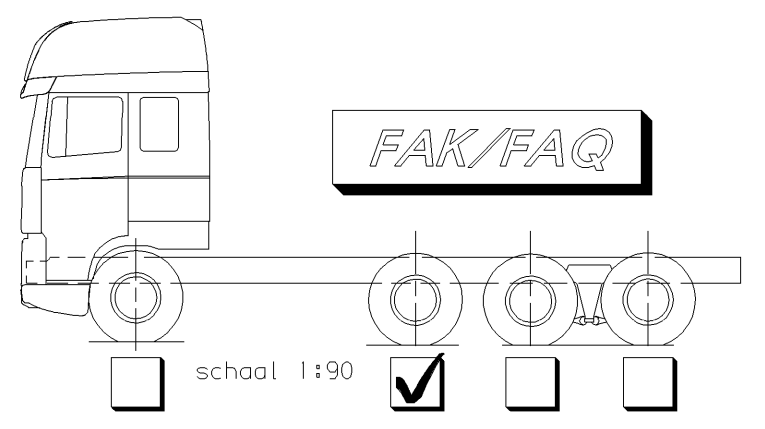


Bladvering VOOR / Leaf suspension FRONT					
Ophanging + Vooras Suspension + Front axle	Y (mm)	C (mm)		Voertuigtype Vehicle type	
75 kN leaf + 152N	162 + [19,62 x (7,5 - F)]	210		FTS/R 2);FAS/R/N 2)	
75 kN leaf + 156N	242 + [19,62 x (7,5 - F)]	130		FAS CF 2)	
				FAS CF 1)	
90 kN leaf + 182N	162 + [13,01 x (9 - F)]	232		FTS/R XF 2);FAS/R/N 2);FAK XF 2);FAQ CF85 2)	
90 kN leaf + 186N	242 + [13,01 x (9 - F)]	152		FAS CF 1)/2)	

Luchtvering VOOR / Air suspension FRONT					
Ophanging + Vooras Suspension + Front axle	Rijstand Driving position Y (mm)	Lage stand Low position Y (mm)	Hoge positie High position Y (mm)	C (mm)	Voertuigtype Vehicle type
75 kN air + 150N	215	135	355	277	FAS/R/N 3)
	205				FAR 3) BDF-uitv.

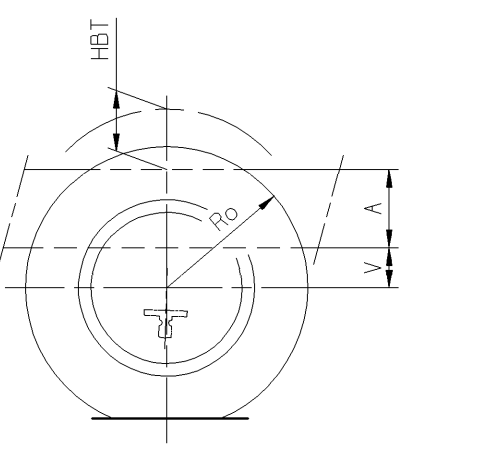


HV=R+Y+A
 AHV_(min.)=R-C



Voor belaste(R)- en onbelaste(Ro) bandenstralen en SV-SB-TB-BV-BB maten zie speciale tekening: 1260799.
 For rolling radius laden(R) and unladen(Ro) and SV-SB-TB-BV-BB dimensions see special drawing: 1260799.
 Pour les rayons des pneumatiques en charge(R) et à vide(Ro) et SV-SB-TB-BV-BB dimensions voir plan no: 1260799.
 Für belastete(R) und unbelastete(Ro) Reifenhalmesser und SV-SB-TB-BV-BB Masse siehe Zeichnung: 1260799.

Luchtvering VOORLOOPAS / Air suspension SECOND STEERED AXLE			
Ophanging + Voorloopas Suspension+ Second steered axle	Met hefbaar voorloopas With liftable second steered axle	V (y.o.y.) (mm)	Voertuigtype Vehicle type
75 kN air + 150N	90		FAK 2)+FAQ CF85 2)

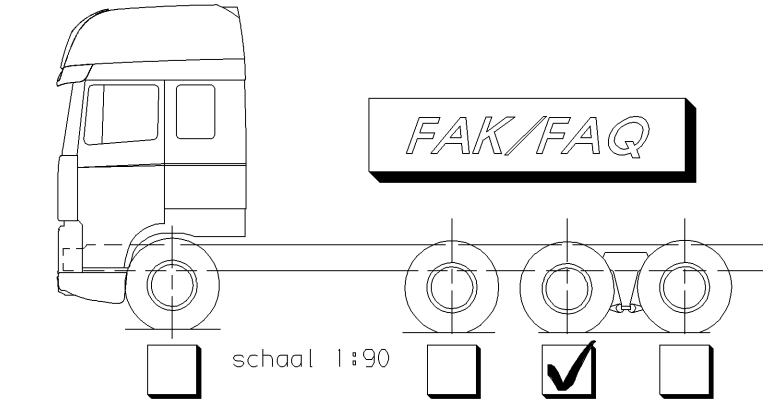
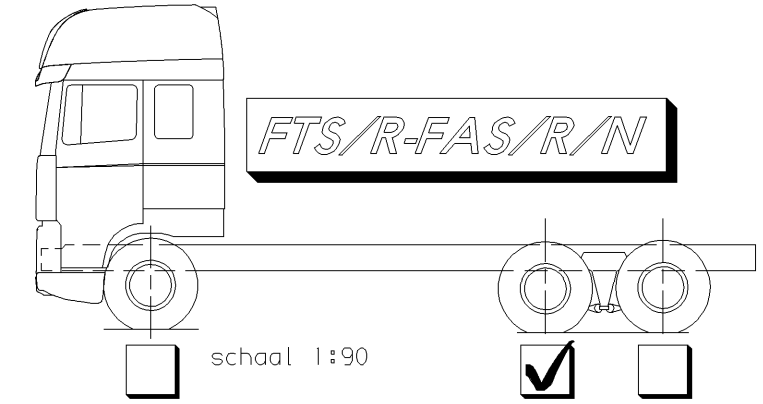


HBT_(max.)=Ro-A-V (y.o.y.)

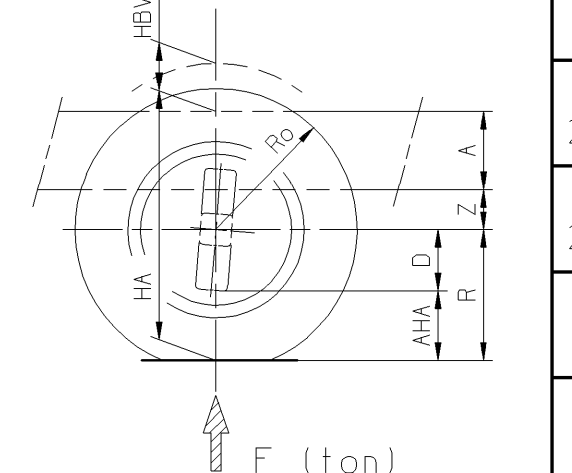
- 1) = Bladveer VOOR + ACHTER
Leaf suspension FRONT + REAR
- 2) = Bladveer VOOR + Luchtvering ACHTER
Leaf suspension FRONT + Air suspension REAR
- 3) = Luchtvering VOOR + ACHTER
Air suspension FRONT + REAR

Attention:
 F.. CF 2): Only CF75/85
 F.. XF 2): Only XF105
 F.. 2) : CF75/85 + XF105

A	A
Langsliggerhoogte Height main girder	260
	310



A	A
Langsliggerhoogte Height main girder	260
	310



HA=R+Z+A
 HBV_(max.)=Ro-A-Z (y.o.y.)
 AHA_(min.)=R-D

*)
 Sleepas op
Trailing axle raised

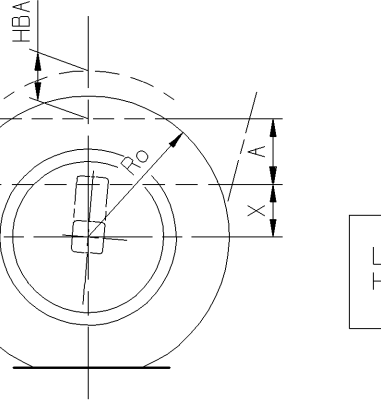
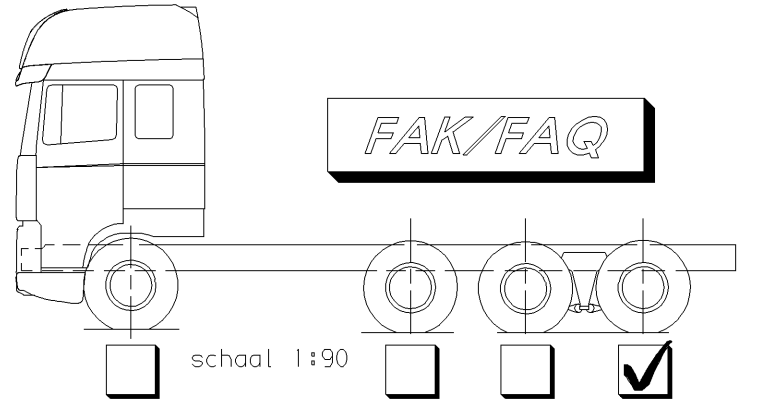
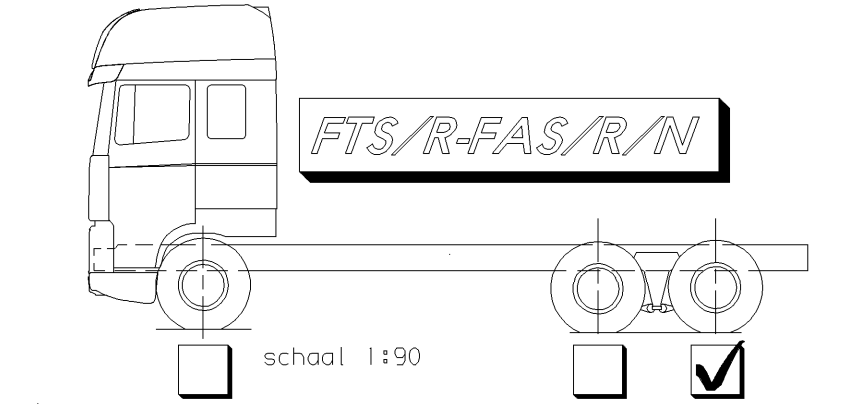
Bladvering ACHTER / Leaf suspension REAR						
Ophanging + Achteras Suspension + Rear axle	Tandembelasting Tandem load F (ton)	Z (mm)	D (mm)	Z (y.o.y.) (mm)	Vooras Front axle	Voertuigtype Vehicle type
196 kN(12+7,6) leaf	1339	F < 19,6 ton	219 + [1,96 x (19,6 - F)]	261	i.c.m. 156N/186N	FAS CF 1)
	1347	F *	331 - [5,73 x (F - 1,5)]	285		
	1356			182		
200 kN(10+10) leaf	1339	F < 20 ton	224 + [1,534 x (20 - F)]	261		
	1347	F *		285		
	1356		359 - [6,63 x (F - 1,5)]	182		

Luchtvering ACHTER / Air suspension REAR							
Ophanging + Achteras Suspension + Rear axle	Rijstand Driving position Z (mm)	Lage stand Low position Z (mm)	Hoge stand High position Z (mm)	D (mm)	Z (y.o.y.) (mm)	Voertuigtype Vehicle type	
198 kN(12+7,8) air	1347	212	140	257	287	---	FTS 2)
	1356	252 *)	---	---	---	---	
200 kN(10+10) air	1339	---	---	---	---	---	
	1347	212	140	263	295	306	FAS 2)/3)
190 kN(11,5+7,5) air	1347	---	---	---	---	---	
	1356	212	140	263	295	---	FAK CF 2)
198 kN(12+7,8) air	1356	212	140	263	295	---	
	1347	252 *)	---	---	---	---	FAK XF 2)

Luchtvering ACHTER / Air suspension REAR							
Ophanging + Achteras Suspension + Rear axle	Rijstand Driving position Z (mm)	Lage stand Low position Z (mm)	Hoge stand High position Z (mm)	D (mm)	Z (y.o.y.) (mm)	Voertuigtype Vehicle type	
190 kN(11,5+7,5) air	1347	212	140	274	---	---	FTR 2)
	1356	252 *)	---	---	---	---	
182 kN(11,5+6,7) air	1339	212	140	281	338	---	FAR 2)/3)
	1347	---	---	---	---	---	
190 kN(11,5+7,5) air	1347	252 *)	---	---	---	---	FAR CF75+XF105 2)/3)
	1356	---	---	---	---	---	
190 kN(11,5+7,5) air	1339	212	140	266	321	261	FAN 2)/3)+FAQ CF85 2)
		252 *)	---	---	---	---	
	1347	192	140	---	357	265	
		232 *)	---	---	---	182	FAR 3) BDF-uitv.

- 1) = Bladveer VOOR + ACHTER
Leaf suspension FRONT + REAR
- 2) = Bladveer VOOR + Luchtvering ACHTER
Leaf suspension FRONT + Air suspension REAR
- 3) = Luchtvering VOOR + ACHTER
Air suspension FRONT + REAR

(y.o.y.)
 As i.j.z. op i.j.z.
 Axle metal on metal



A	A
Langsliggerhoogte Height main girder	260
	310

HBA_(max.)=Ro-A-X (y.o.y.)

Bladvering SLEEPAS / Leaf suspension TRAILLING AXLE			
Ophanging + Sleepas Suspension + Trailer axle	X (y.o.y.) (mm)	Voertuigtype Vehicle type	
196kN(12+7,6) leaf 200kN(10+10) leaf	+ 09N220 97 135 *)	FAS CF 1)	*) Sleepas op Trailing axle raised

Luchtvering SLEEPAS / Air suspension TRAILLING AXLE			
Ophanging + Sleepas Suspension + Trailer axle	X (y.o.y.) (mm)	Voertuigtype Vehicle type	
198 kN(12+7,8) air 200 kN(10+10) air	+ 09N220	FTS 2)+FAS 2)/3)	
182 kN(11,5+6,7) air 190 kN(11,5+7,5) air 194 kN(12+7,4) air	+ 09N075	FTR 2)+FAR 2)/3)	
190 kN(11,5+7,5) air + 09N220		FAK CF 2)	
198 kN(12+7,8) air + 09N220		FAK XF 2)	
190 kN(11,5+7,5) air 194 kN(12+7,4) air	+ 09N075	FAN 2)/3)+FAQ CF85 2)	

GEEN MATEN VAN TEKENING OPMETEN,
 WIJZIGINGEN ZONDER VOORAFGAANDE KENNISGEVING VOORBEHOUDEN,
 VOOR UITVOERING VAN HET VOERTUIG RAADPLEGE MEN DE ORDERBEVESTIGING.

DO NOT SCALE DRAWING,
 SUBJECT TO MODIFICATION WITHOUT PRIOR NOTICE,
 PLEASE SEE NOTE FOR DEFINITE VEHICLE EXECUTION.

NE RIEN RELEVÉR DU DESSIN,
 SOUS RÉSERVE DE MODIFICATIONS SANS AVIS PREALABLE,
 VEUILLEZ CONSULTER LE BON DE COMMANDE POUR L'EQUIPEMENT
 DU VEHICULE CONCERNE.

KEINE ZEICHNUNGSMASSE AUFMESSEN,
 ÄNDERUNGEN OHNE VORANKÜNDIGUNG VORBEHALTEN,
 DIE AUSFÜHRUNG DES BETREFFENDEN FAHRZEUGS ENTNEHME
 MAN DER AUFTRAGSBESTÄTIGUNG.

FAQ CF85: Wagenhoogtes voor- + achterasoph. toeg.(Inq. N1103)	110718	RBO		10663	05
FAK CF85: Wagenhoogtes voor- + achterasoph. toeg.(Inq. N0966)	090511	RBO		10663	04
FTR CF85: Wagenhoogtes voor- + achterasoph. toeg.(Inq. N0973)	080422	RBO		10663	03
FAR CF85: 1356 A-AS vervallen.(Mui/del D276)	080407	RBO		10663	02
FAR 3) BDF-uitvoering Wagenhoogtes VOOR + ACHTER toeg.(Lay-out)	070403	RBO		10663	01

modification description		date	drawn by	auth. by	mod.no.	issue
general tolerances						
tolerance principle						
title		WAGENHOOGTES CF/XF VEHICLE HEIGHTS CF/XF FTS/R-FAS/R-FAN-FAK-FAQ Proj. 10680-10841				
for drawing interpretation, see DAF standard material						
surfaces/corners		heat/surface treatment	size	scale	sheet	model number
		/	SP	1:30	1 of 1	
authorised by		date	point specification		third angle projection	
drawn by		date	prod.grp spec. spec. indicat.		drawing/issue number	
R. Bosmans		041111			1668114/05	
source		replacement for		replaced by		
				CAD Unigraphics II		